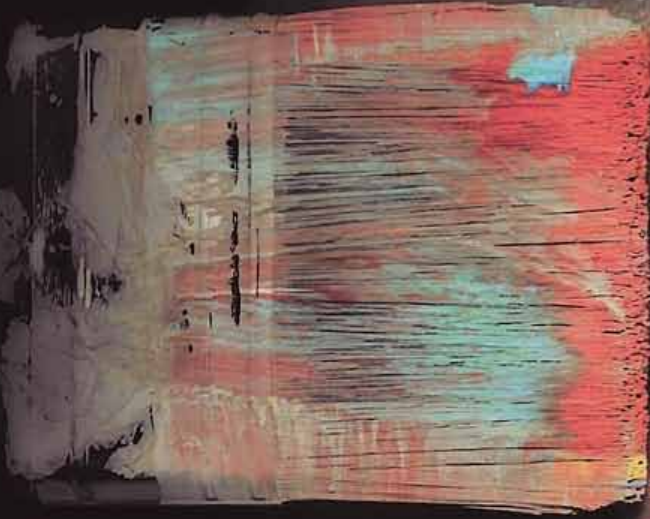


APRIL 2016 ISSUE 6



CRANLEIGH M GAZINE



# Art of Cranleigh

A magazine and website for Cranleigh and the surrounding areas  
[www.cranleighmagazine.co.uk](http://www.cranleighmagazine.co.uk)

# CROWES

EST. 1991



## Horsham Road, Cranleigh

£995,000

A beautifully presented four bedroom family house offering 2,612 sq/ft of versatile accommodation, with light and spacious reception rooms, stylish kitchen and bathrooms, and 0.75 of an acre of garden backing onto woodland. Situated within a mile of the High Street and convenient for schools. EPC Band E.



## Loxwood Road, Alfold

£850,000

A light and spacious family house, with five bedrooms, three generous reception rooms and a conservatory overlooking a large landscaped garden. Situated in the centre of the village and convenient for the A281, Guildford and Horsham are easily accessible and both provide fast road and rail links into London. EPC Band F.



Sales, Lettings & Property Management

Tel: 01483 267181 | Email: [info@crowesproperty.com](mailto:info@crowesproperty.com) | [www.crowesproperty.com](http://www.crowesproperty.com)



# contents

April 2016

## CRANLEIGH MAGAZINE

**WELCOME** to Cranleigh Magazine in the month of April. A month that can be full of surprises - starting on April Fool's Day and throughout a month renowned for the variation of weather each day. May be our own lives will be filled with surprises in the way we live and connect with one another. 'The Art of Living' in Cranleigh is expressed in a surprising number of ways this month. So take a look inside.

Cranleigh Magazine is a unique publication compared with other everyday magazines. Partnered with its sister website - [www.cranleighmagazine.co.uk](http://www.cranleighmagazine.co.uk) - it creates a connection with people through their work and social networks. Take a look at our website and register your business or enjoy reading some of our exclusive articles.

Why not submit your local news to the Cranleigh Magazine or advertise your business, keeping Cranleigh and neighbouring villages informed and connected in 2016.

Contact 01483 275054 or email: [paul@cranleighmagazine.co.uk](mailto:paul@cranleighmagazine.co.uk)

### 4 The Joy of Cranleigh

#### FEATURE ARTICLE

#### 6 People Profile

Model Maker Keith Field



#### 11 Crane Spotter

#### 14 April Crossword

#### 15 April Sudoku

#### 16 Dates for Your Diary

#### 26 Unappreciated SHORT STORY

#### 27 How To Grow Your Own Sunflowers

Colin the Cranleigh Chameleon, is hidden somewhere in the magazine. Can you spot him?



<https://www.facebook.com/CranleighMagazine>  
<https://twitter.com/cranleighmag>

#### 28 Book Review

#### 29 April-Garden Jobs To Do

#### 33 Glebelands School

#### 35 Cranleigh . . . A Little Revealed History

#### 36 The Art of Cooking

#### 40 The Jungle, Calais

#### 41 Cranleigh Arts Centre

#### 44 Rowleys Centre

#### 44 St. John Ambulance



Cover Photo  
Art of Cranleigh

**Personal Trainer**

**07793 221 017 SIMON SMITH**  
[simonsmithrugby@gmail.com](mailto:simonsmithrugby@gmail.com)

**Smithy Cottage, Ewhurst Road Cranleigh, Surrey**

Email: [paul@cranleighmagazine.co.uk](mailto:paul@cranleighmagazine.co.uk).

© Published by Cranleigh Magazine Ltd. Tel: 01483 275 054

[www.cranleighmagazine.co.uk](http://www.cranleighmagazine.co.uk)

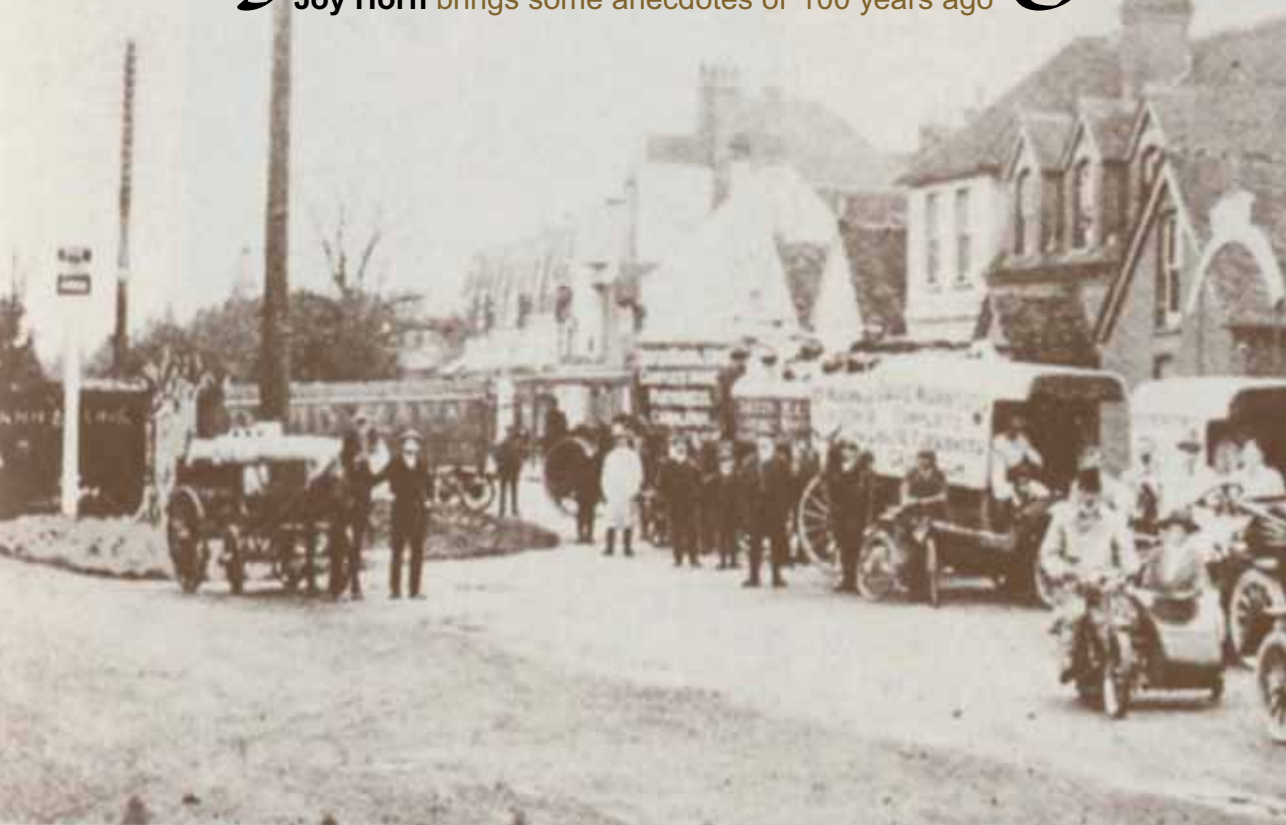




The way we were

# Joy of Cranleigh

Joy Horn brings some anecdotes of 100 years ago



*Mann's fleet of vehicles just before the War*

## What was happening in Cranleigh in April 1916?

**A**t Cranleigh School, a sporting revolution had taken place during the spring term. The April issue of *The Cranleighan* reported: 'we are actually playing the despised Rugby'. This marked the change from being a soccer-playing school, and was spearheaded by a rugby-playing master who proved to be a gifted coach. Moreover, the school had recorded its first victory at rugby.

The Cranleigh Infants and Elementary School (to give its full name) had 89 children on its books in April. However, on 3rd April only 50 children attended, owing to an epidemic of mumps in the village. (The incidence of mumps fell dramatically after the MMR vaccine was introduced in 1988.)

The Women's War Work Committee reported on its activities. There had been 1,160 attendances at the Baptist Chapel, and 275 garments had been sent to Oaklands

Red Cross Hospital and 275 to the headquarters of Queen Mary's Women's Needlework Guild, to which the branch was affiliated. Mrs Eric Bonham of Knowle had been secretary until recently, and 'under her able care, the branch has flourished'.

At the Hambledon Tribunal meetings, employers continued to struggle against the conscription of vital workers. Charles Hight, fishmonger, poulterer and seedsman, of Cranleigh Common, applied for exemption from military service for his shop manager, Ernest Buckman, 28, but was allowed only one month. Messrs. Mann, furniture removal contractors and upholsterers, applied for exemption of their motor driver, Ernest Ledbitter, 25, as he was the only driver they had left. Out of a staff of nine, six had joined the Army. He too was granted merely a month. Mr Hoskins, master butcher and grazier, applied on behalf of Stanley E. Fletcher, his slaughterman, who was the only man left in his business, and the only





slaughterman left in the whole of Cranleigh. He was granted two months.

Mr A.B. Johnston of New Park, whose carter had been refused exemption, wrote to the Surrey Advertiser, describing his problems in farming. He described how he and his brother farmed five farms, amounting to 600 acres. His father, 78, had been totally blind for twenty-five years and his eldest brother was totally deaf from birth. Another brother had been refused exemption, therefore 'after harvest (if I can ever get it in), our arable ground – about 200 acres – must again go out of cultivation. Considering that we grew £2,000-worth of corn, straw and roots [root vegetables] in 1915, this seems a very serious matter. This policy is not in Britain's interest.'

Mr William Welch of 'Stonewall' on the Common also wrote to the Surrey Advertiser encouraging women to register with his wife, Mrs Welch, to do farm work. 50-60 Cranleigh women had already done so. 'Several farmers have expressed their willingness to employ them', and some women had started work. They were eligible to wear green armlets, supplied by the Board of Agriculture, after 30 days' work.



Easter Sunday fell on 23rd April this year. At the parish church, Communion services were held at 6am, 7am, 8am and midday, and the Rector reported in the Parish Magazine that the number of communicants was three times what it had been twenty years ago. ■

*Above left, Armband of the Women's Land Army*

**The Cranleigh History Society** next meeting is on Thursday 14th April for a walk around Ockley, taking in the Mill and the Green. Meet at The Cricketers at 1.00pm for lunch or 2.30pm outside. Leader Michael Miller (01483 274599).



*Hight's in the early 1920s – where Village Carpets & Flooring and A Cut Above are now*

# People Profile

## THE ART OF MODEL MAKING



Who's who?

### *Glimpses of Middle Earth in Surrey*

## Keith Field

Model maker



**H**idden away, in the loft of a double garage in Betchworth, lie glimpses of Middle Earth – the fantasy world of J.R.R Tolkien, described in his books ‘The Hobbit’ and ‘The Lord of the Rings’.

Back in 1994, Keith Field made a promise to act as Godparent on behalf of his friends’ son, David, and set him an example of good Christian living. Little did he realise it would involve over 14 years of creating miniature scenic models for David’s Hobbit Strategy Game figures!

Keith’s love of model-making began early in life. At the age of four, he had developed acute bronchial asthma, which eventually resulted in his attendance at school totalling a low of 30%. When Keith wasn’t in school -which was most of the time- he spent his time cooped up at home or in bed. Since he was naturally unable to participate in sporting activities and outdoor games, he gravitated towards creative pursuits he could enjoy indoors, such as: playing the piano, drawing, and arts and crafts.





*Three elven riders*

Enrolling at the age of nine, Keith spent nearly two years at a home for asthmatics on the Isle of Wight. His class teacher, Mrs Vine, sought to encourage his creative spirit further.

Every Wednesday afternoon, she brought out a large box, full of what we would now call 'recyclable rubbish', for the children to enjoy a junk modelling session in which they were allowed to use rubbish to create 'works of art'.

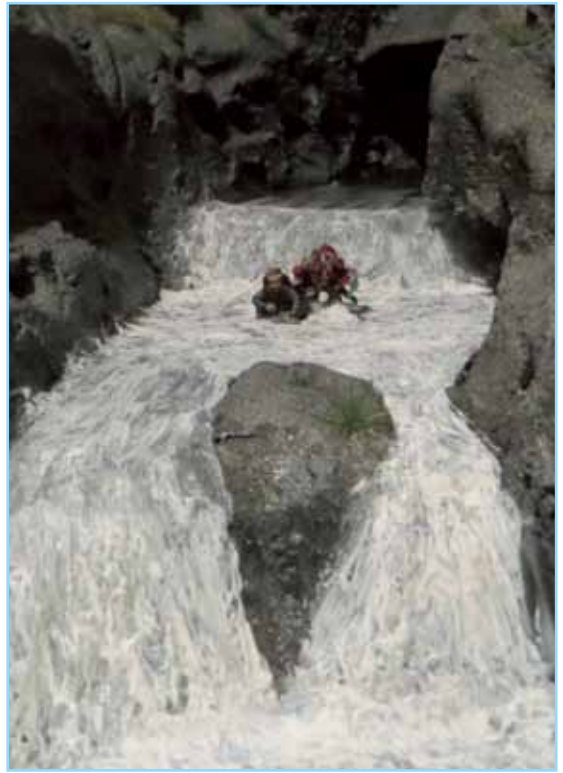
When David began to show an interest in Games Workshop's Hobbit figures, Keith was only too happy to help him create some realistic scenes for David to display them in.

Since the age of 8, David, now 22, has developed and meticulously painted an impressive collection of figures, from the huge mumakil, to whole armies of orcs, goblins, elves, rangers, hobbits, and dwarves. Using Keith's living

room in Cranleigh as a makeshift workshop, the pair enjoy working together to create some of the most beloved places from Tolkien's mythical Middle Earth. Keith still loves the excitement and challenge that sculpting these mythical habitats brings. Typical materials include: builders' off-cuts, house-hold rubbish, and DIY and artist's materials.

Through the modeller's eye, sheets of insulation board and powdered filler can be carved into rock faces, transparent sealant becomes waterfalls, multicore cable and builders' caulk become trees, sheets of foam board become fortress battlements, and a piece of braid makes a carved wooden barge board.

In 2014, David and Keith were delighted to win the Gold Medal for their 'Barrels out of Bond' white-water river in the Epsom Games Workshop's 'Armies on Parade' competition. Their current project is the "meeting of the White Council in Rivendell". Through the creation of each model, the duo are still learning new skills and techniques.



*Bilbo and the dwarves escape from the Wood Elves*



*David Coslett with a finished piece of artwork*

Most of their models have never been publicly displayed, but they have planned a first ever 'Model Showcase' on 9th April at The Reading Room of Buckland Church near Reigate.

This showcase will provide a unique opportunity for others to view their meticulous models, and ask questions about the process



*Breaking through the Deeping Wall*

*Cromwell Coffee House-Homemade Food*





behind their construction. In doing this, the pair want to raise funds to support one charity working with Syrian refugees, led by two former teachers from Cranleigh School, who are providing a basic education for Syrian refugee children in Lebanon, and "The United Society", who are working in the refugee camps in the Diocese of Europe. If you would like to see these models for yourself and support a worthwhile charity, full details of the Showcase are on page 34. ■

*A Warg rider*



*Castle gates in Osgiliath*

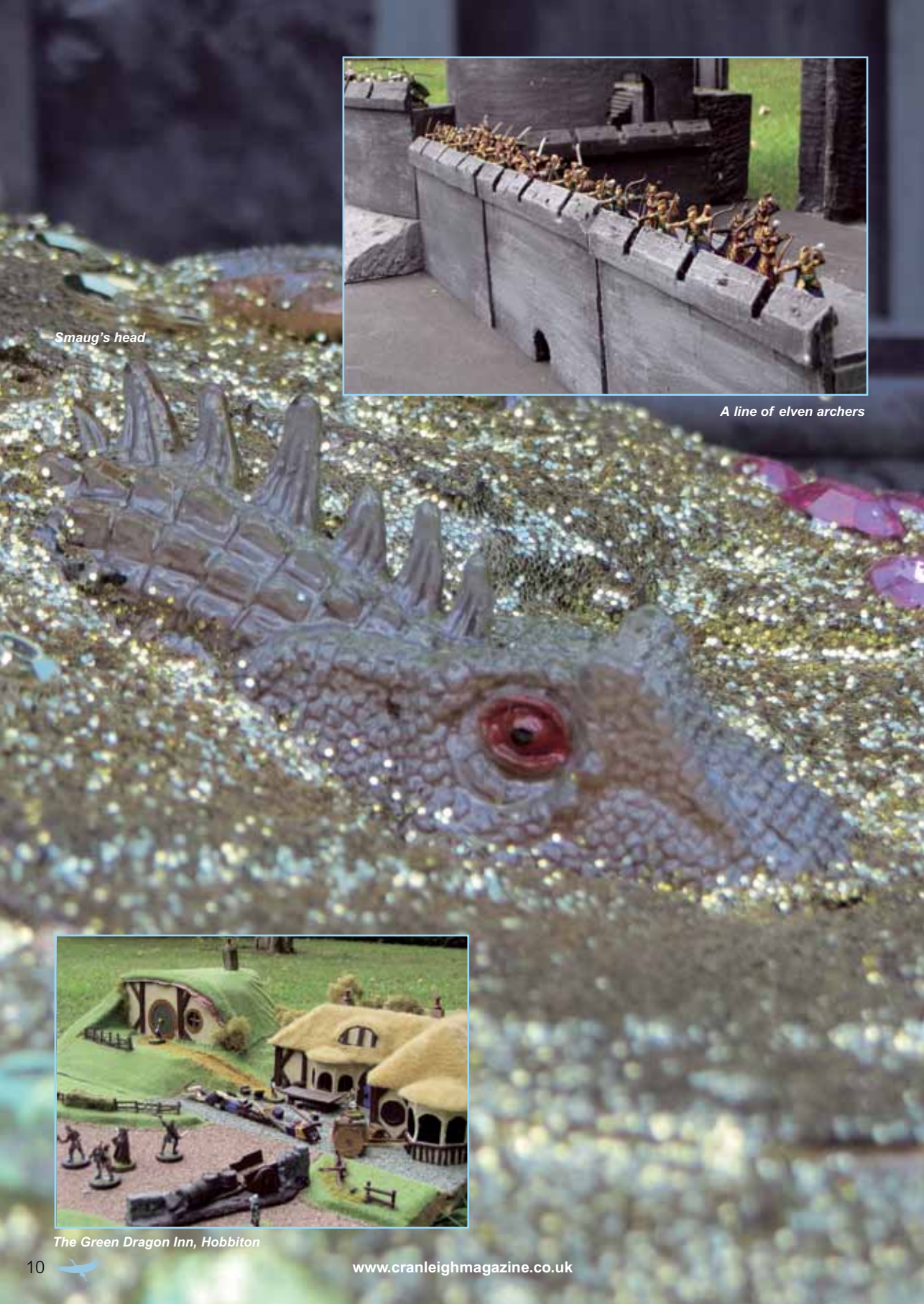


*David constructing a basic landscape platform*

*Cromwell Coffee House-Homemade Food*







*Smaug's head*



*A line of elven archers*



*The Green Dragon Inn, Hobbiton*



# Crane Spotter:

## tales from a Cranleigh birder

**April – When falls  
and showers are welcome**



Swallow

**T**his is the month of change when we say a last farewell to any lingering birds who spent the winter with us.

Last month hundreds of chattering Redwings and 'chacking' Fieldfares could be seen worming their way across Cranleigh's fields and paddocks. They were piling on the fat in readiness for their long journeys north to breed. By the time you read this they will probably have all departed.

The mild 2015 -16 winter meant there was no need for these shy thrushes to risk venturing into the larders of most small Cranleigh gardens.

In harsh weather I have known Fieldfares act like sentries near any remaining garden berries, even rose hips. They fiercely drive off all comers until the store is gone – one another, Blackbirds, Song Thrushes, and Redwings.

But even they will give way to one of their family who is higher up the pecking order – the tubby chested Mistle Thrush. When this chap drops by it is generally because he is mighty hungry. And if he allows his congeners to stay for the remaining feast then the berries will soon be wiped out.

Another name for our largest thrush is the Storm Cock, for unlike many other species he seems to be stimulated to sing lustily from the tree tops when darkened skies herald approaching Spring storms. Which brings me to showers – and April falls. But not the wet kind. April is the exciting month when an array of species arrive from Africa. And they will soon replace our departing Scandinavian and Eastern European feathered friends.

What is known as a 'fall' of migrant birds is more commonly noted at coastal sites. But you might be fortunate enough to observe it happening in and around the village, especially after rain.

Some species will be on their way elsewhere but others are destined to stay. The first little shower you can expect are Northern Wheatears. They started arriving around the third week of March. Look out on the sports pitches - before early morning dog walkers get there - or the fields, where you may find them perched on fences.

Sand Martins are another early but scarce passage bird around here and the best tip I can give to see these is to keep an eye out for small flocks heading north when you are on a south facing slope of the Surrey Hills.

I had my first overwintering Cranleigh Chiffchaff in January this year, in my garden. Now they are everywhere. Blackcaps increasingly visit in the winter months too so you might have seen one already - but reinforcements are on their way.

Willow Warblers sing from early this month to be joined any day by the Whitethroat, the Garden Warbler, Nightingale, Swallow and House Martin – to name just a few.

Keep your ears open for the Cuckoo from around 8 April and your eyes peeled to the skies. Anything is possible in the great Spring migration. Even an Osprey. Or something much rarer. ■

Twitter – @Crane\_Spotter







## Special Cranleigh Magazine offer for Crane Spotter readers

Want to know more about birds in Surrey? Why not join Surrey Bird Club? Subscriptions are only £15 a year and this brings you a quarterly magazine, an annual bird report, organised field meetings and lectures.

But I've negotiated an absolutely cracking deal! Sign up with a direct debit at [www.surreybirdclub.org.uk](http://www.surreybirdclub.org.uk) and you will be given a copy of the 700 page ground-breaking book *Birds Of Surrey*, by Jeffrey J. Wheatley, **TOTALLY FREE**. Its cover price is £35. 'Nuff said. And no, this isn't an April fool joke.

Published in 2007, it includes records from an army of keen birders, including myself, a systematic list and species accounts, breeding distribution maps, analysis of breeding surveys, population estimates, charts and histograms, ground and aerial photographs, plus vignettes, paintings and line drawings.

There are also background chapters on climate, history, geology, personalities, other societies and habitats and the effects of human intervention.

**The offer applies while stocks last only**



### T.C. Trinder

**Tree Surgery  
and Felling**

ALL TYPES OF FENCING  
Cranleigh  
**t: 01483 276 326**



### PARK LAUNDRY

**Ironing and Laundry Services**

**From Shirts to Sheets**  
Iron only or wash and iron. Weekly,  
fortnightly, one offs or on demand welcome.

e: [parklaundry@btinternet.com](mailto:parklaundry@btinternet.com) **t: 07766 411 350**

*Cromwell Coffee House-Homemade Food*

## Art of Cranleigh

### The art of . . .

**W**ell, anything can be an art form, if time is taken to appreciate it.

**Speaking**, for instance. When we speak, our accents **colour our words** with our unique perspectives, brought from all over the world. Each language has a unique history and culture you might not contemplate when they're being used to describe the rainy English weather or tell you "that's £2.50 please."

**Walking** along the high street you may not notice the art form the buildings around you represent, the hard graft put into designing and building the cultural symbols above your bowed head, eyes too busy with the phone in your hands.

**Cooking** as an art form is not something many of us have time to pay tribute to properly. The morning school run serves up burnt toast and soggy cereal, steeped in sugar. And come evening, the view is of you, manhandling some chips and processed meat into the oven, your mind on getting the kids into bed.

**Sleeping** is an art form some of us have perfected too well! Snoozing the school or work hours away whilst **the art of living** is just waiting to be discovered.

Open your eyes to the beauty around you, and **life will become your art form.** ■



# lynn murray & co

Where **experience** makes **the difference!**

Locally based solicitors who solve your legal problems in a friendly and approachable manner whether you are an individual, a business or a non-commercial organisation.

Experts in property, wills, probate and lasting powers of attorney.

t: 01483 26 88 47

f: 01483 27 39 34

e: [lynn@lynnmurray.co.uk](mailto:lynn@lynnmurray.co.uk)



[www.lynnmurray.co.uk](http://www.lynnmurray.co.uk)

The Old Bakery, Collins Court, 39 High Street, Cranleigh GU6 8AS



**Tyres & Servicing**

## Friendly & Reliable

Chat to our staff about your next car service.

### WE ARE ALWAYS HAPPY TO HELP!

Why not book your car into our workshop for it's next service and try us out. We have many satisfied customers who return year after year because they can trust our services. Just give us a call and see for yourself.

### Servicing, \*M.O.T.'s. Exhausts & Batteries

\*All M.O.T.'s can be arranged as part of your usual car service.

t: 01483 277794



**FREE**  
quotes!  
Competitive  
rates!  
Local collection  
and delivery  
service!



Chris



Simon



Paul



e: [sales@elescranleigh.co.uk](mailto:sales@elescranleigh.co.uk) [www.elescranleigh.co.uk](http://www.elescranleigh.co.uk)

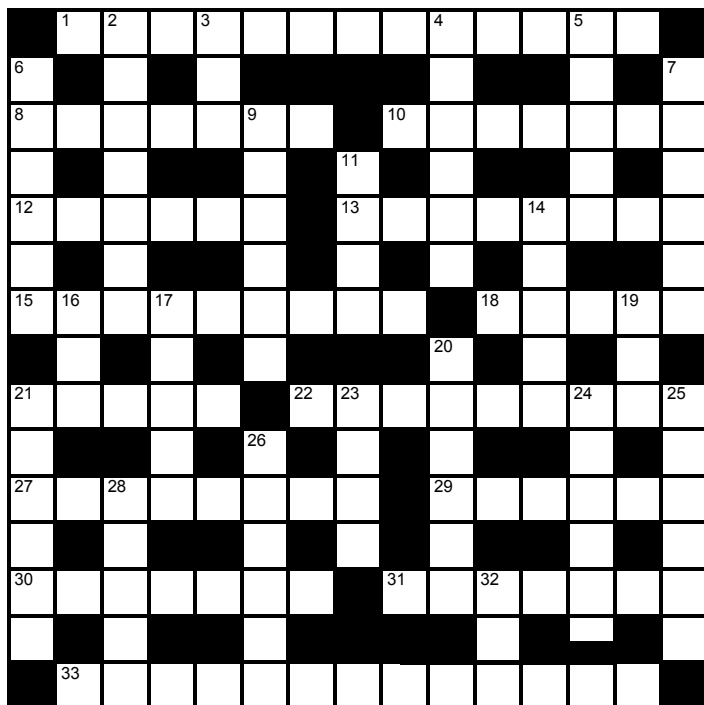
15 Manfield Park, Guildford Road, Cranleigh, Surrey GU6 8PT



A percentage of Ele's profits support the David Shepherd Wildlife Foundation



## April Crossword Puzzle 1 - Hard Level



### Across

1. Sew on a sewing machine (7,6)
8. Purposeless (7)
10. Small fish (7)
12. Seat occupied by a sovereign (6)
13. Load to excess (8)
15. Kinsfolk (9)
18. Radio location (5)
21. Spanish Mister (5)
22. Under an assumed name (9)
27. Convince (8)
29. Group of six (6)
30. Membrane in the ear canal (7)
31. Crew of an aircraft (7)
33. Projector operator (13)

### Down

2. Commander in chief of a fleet (7)
3. Weeding implement (3)
4. River in S England (6)
5. Capital of Egypt (5)
6. Chatter (6)
7. Not tough (6)
9. Pertaining to scenery (6)
11. Flower (4)
14. Get to know (5)
16. Female sheep (3)
17. Tiny particles (5)
19. Insect (3)
20. Dwarfed tree (6)
21. Evening meal (6)
23. Requirement (4)
24. Doctors (7)
25. Capital of Canada (6)
26. Excrement used as fertilizer (6)
28. Less common (5)

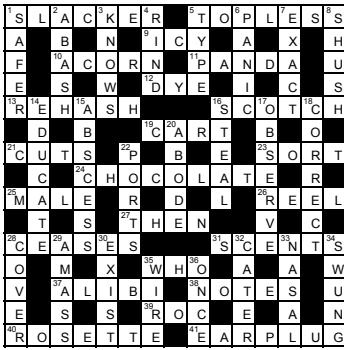
Crossword and Sudoku – answers will appear in the next issue.



Colin the Cranleigh Chameleon, was hidden on pages 17 and 26 of the March magazine. Did you spot him?







March Crossword Solution

### April Sudoku Puzzle 1 - Easy

		3						8
6						4	5	
					9		6	3
4			1					5
		6	8	5				
7						6	3	1
				9		3		
	8		3		7			
	2					9		

### April Sudoku Puzzle 2 - Hard

	2				5			
	4			3				7
				1		3		8
6			3	7				
4	9						2	
		2						
				8		1		
			9					4
1		8				7	9	



### Personal Storage

Centristore offer a comprehensive range of personal storage options including furniture boxes, container storage and warehouse space.



### Business Storage

Centristore offer a range of storage options to business customers from self-storage units & warehouse space to palletized & racking alternatives.



### Offices to Rent

Centristore offers small affordable office spaces to rent. Spaces are available for immediate occupation.



**T: 01483 272000**

**E: [sales@centristore.co.uk](mailto:sales@centristore.co.uk)**

Mead House, Littlemead Industrial Estate, Alfold Road,  
Cranleigh GU6 8ND, United Kingdom

March Sudoku Easy Solution

4	9	6	1	3	2	7	8	5
7	1	8	5	9	6	3	2	4
2	3	5	4	8	7	9	1	6
6	8	1	9	7	4	2	5	3
3	4	7	2	6	5	1	9	8
5	2	9	3	1	8	6	4	7
8	6	2	7	4	9	5	3	1
9	7	3	8	5	1	4	6	2
1	5	4	6	2	3	8	7	9

March Sudoku Hard Solution

3	9	4	8	1	5	6	2	7
6	2	1	9	7	3	5	8	4
7	5	8	6	2	4	3	9	1
9	6	7	3	8	1	4	5	2
8	1	5	7	4	2	9	3	6
2	4	3	5	6	9	7	1	8
4	3	2	1	9	6	8	7	5
5	7	6	2	3	8	1	4	9
1	8	9	4	5	7	2	6	3

# DDays Dates for your Diary



## Cranleigh Country Market

**Friday 1, 8, 15, 22 & 29 April**

Cranleigh Country Market will be held in The Bandroom, Village Way, Cranleigh, 9.15 – 10.30 am, offering a wide selection of home-made baked items and preserves, hand-made crafts and home-grown produce direct from the producer. Meet your friends for an early coffee and sample some delicious home-made cake!

## HEALTH & LEISURE WALKS

**Sun 3 April 10:00am: Loxwood (1)**

A 3¼ mile walk taking 1½ hours, through local woodland some lanes and along part of the Arun Canal, ending near a local pub. No stiles, fairly flat. Sorry no dogs. Can be muddy at times please wear reasonable footwear and bring some water to drink along the way. Park at Loxwood Surgery car park (off Station Road), by kind permission for the duration of the walk only. RH14 0SU (TQ041314),

**Leaders Pete, Sharon and Rich 01403 784042**

**Mon 4 April 10:00am: Coldwaltham**

Meet at the Labouring Man car park in Coldwaltham Village. (Old London Rd). The pub is not open on Mondays apart for the evenings. A 5 mile walk, taking 2½ hours, takes us past the church on an enclosed path then on a quiet road till we reach woodland bringing us to the outskirts of Fittleworth. We then follow the Serpent Trail to the Lords Piece, a beautiful ridge on heathland where we will stop for a short break. We then return to Coldwaltham.

**Leader Irene 07790 420752 / 01403 783637**

**Tue 5 April 10:00am: Ockley Forest Green,**

Park/meet in car park on the Horsham side of the Village cricket field (TQ 146399). Flat (some stiles) 5¼ mile circular walk over farmland on the Sussex/Surrey border. Superb views of the North Downs & Leith Hill Tower; many old interesting farm buildings and houses. No dogs. 2 ½ hours.

**Leader Geoff 01403 258180**

**Wed 6 & 20 April 10:00am:**

**Rudgwick Brickworks (2)**

Meet in the "The Milk Churn", Rudgwick Brickworks, Lynwick Street, RH12 3DH. From Horsham, take the A281, turn right at the Fox Inn, into Lynwick Street, then one mile on left, just over the bridge. A 4/5 mile walk, taking 2 hours, taking in the Downs Link and surrounding countryside. Can be muddy in places.

**Leader: Keith 01403 823436**

**Tue 12 April 10:00am: Okewood Hill**

**Bluebell & Orchid Walk**

Meet in the car park at The Punchbowl Inn, Okewood Hill, (RH5 5PU, TQ132373) for a 5 mile circular walk through woods and farmland including good views of the Surrey Hills, taking 2½ hours. Could be wet and muddy in places after rain. Good food and drink available in the Punchbowl Inn at the end of the walk. No dogs please as we may encounter livestock. **Leader Lynne 01403 268157**

**Sun 17 April 10:00am: Loxwood (3)**

A 4 mile walk, taking 1¾ hours, through local woodland some lanes and along part of the Arun Canal, ending near a local pub. No stiles, fairly flat. Sorry no dogs. Can be muddy at times please wear reasonable footwear and bring some water to drink along the way. Park at Loxwood Surgery car park (off Station Road), by kind permission for the duration of the walk only. RH14 0SU (TQ041314),

**Leaders Pete, Sharon and Rich 01403 784042**

**Tue 19 April 6:30pm:**

**Scarlett Arms Walliswood**

Park in the car park opposite the pub The Scarlett Arms (RH5 5RD, TQ118381). A lovely 3½ mile walk taking 1¾ hours, which includes passing through Surrey Wildlife Trust conservation area, the tiny hamlet of Mayes Green and one steep incline with views to the North Downs. Leith Hill tower is just visible amongst the trees on the skyline. No dogs.

**Leaders: Pauline 01403 240419 or Jane 01403 261672**

**Sun 24 April 10:00am: Loxwood (5)**

A 6 mile walk, taking 2½ hours. Parking in the Loxwood Doctors Surgery, Farm Close, (off Station Road), RH14 0SU (TQ041314), by kind permission for the duration of the walk only. Can be muddy at times please wear reasonable footwear and bring some water to drink along the way. Sorry, no dogs.

**Leaders Pete, Sharon & Rich 01403 784042**

**Mon 25 April 10:00am: Capel**

Meet in the car park in the car park of the Memorial Hall Capel (TQ176408) for a 5½ mile circular walk,

taking 2¾ hours, with a few stiles through woods and across farmland with an optional coffee stop at the Tanhouse Farm Shop on route. No dogs please as we may encounter livestock.

**Leader Mike 01403 242564**

**Tue 26 April 10:00am:**

### **Ranmore Common – Polesden Lacey.**

A 5 mile circular walk on woodland and farm tracks within remote wooded valleys around the Polesden Lacey Estate. Some inclines. Meet at National Trust car park on Ranmore Common Road (RH5 6SR) (TQ 141503). Please note that there is a parking charge for non NT members. 2¼ hours.

**Leader Geoff 01403 258180**



## **ST NICOLAS CHURCH FLOWER FESTIVAL**

The Flower Festival fills St Nicolas Church Cranleigh from Friday 29th April and is on until Monday 2nd May 2016 all produced by ladies who have come forward to offer their skills and talents, to make this a worthwhile visit, the festival only takes place every other year so we look forward to your visit this year. The theme "Patron Saints" there will be as many as 30 individual displays which allows for much scope for stimulation for the imagination and interpretation of the many people involved.

Feel free to just walk into St Nicolas Church during the weekend and enjoy an invigorating stroll through the flowers whilst accompanied by music which will surely help you relax and take in the lovely atmosphere. If you require any further information [www.stnicolascranleigh.org.uk](http://www.stnicolascranleigh.org.uk)

## **Alfold Chapel**

**Saturday May 14th  
10:00 till 13:00**

Alfold Chapel, Alfold, invite you to their 'Spring Sale' Free entry, come and browse our stalls. Sale of Plants, New clothes, Bric-a brac etc.

**Refreshments available.**

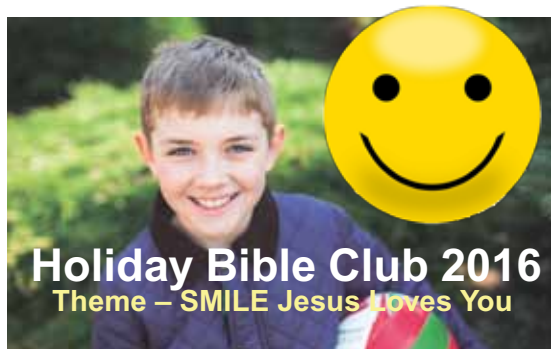


## **EWHURST BOWLING CLUB**

If you would like to try your hand at bowling, Ewhurst Bowling Club warmly invite you to our 'Bring a Friend' Day on Saturday 14th May at 2pm. We look forward to welcoming you to our friendly club. Please contact Richard on 01483 277494 or Nigel on 01483 272513 or just come on the day.

We are also holding a Bowls for Beginners U3A Course on the following Mondays, 23rd May, 6th, 13th and 20th June from 2pm to 4pm. Please contact Nigel Sloman on 01483 272513 if you would like to join his group, where you will be made very welcome.

You will be made welcome on both the above invitations, the only requirement will be flat soled shoes, all other equipment is provided.



## **Holiday Bible Club 2016** Theme – SMILE Jesus Loves You

**Monday 8th - Friday 12th August**

**9:15am – 12:10pm Start:** Cranleigh Common

**Finish:** Cranleigh Baptist Church

**Free and open to all aged 4 – 11**

(must be 4 by Sunday 7th August)

For more information contact **Andy Turnbull** on

**01483 275371 or 07984679407**

Email: [andy@cranleigh.org.uk](mailto:andy@cranleigh.org.uk)



**HANDYMAN'S HARDWARE**  
DECORATING • JOINERY • ELECTRICAL • HOMEWARE • GARDENING • TOOLS • KEY CUTTING



# 'An Aladdin's Cave of DIY'

Over 15,000 listed products inside!



**Your local friendly  
Shopkeeper!**

# HANDYMAN'S HARDWARE

When you pop in to our shop you will be amazed,  
not just by our friendly staff, but by our huge variety of  
DIY products too.

Come in and see for yourself!

## 01483 272916

28 High St. Cranleigh GU6 8AE



**10%**  
OFF YOUR INVOICE  
ON PRESENTATION OF  
THIS ADVERT

**MOST COMPETITIVE RATES IN THE CRANLEIGH AREA**  
**PLUS 10% OFF**

**FREE COLLECTION AND DELIVERY**  
**SERVICING**  
**MOTS\***  
**REPAIRS**  
**DIAGNOSTICS**  
**TYRES**  
**EXHAUSTS**  
**BATTERIES**  
**BRAKES**  
**WELDING**  
**RECOVERY**

\*ALL MOTS CAN BE ARRANGED AT YOUR CONVENIENCE

**FREE**  
COURTESY CAR  
AVAILABLE

**FREE VEHICLE CHECK**

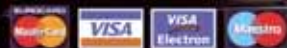
MAKE SURE YOUR CAR IS  
SUITABLE AND SAFE TO DRIVE

**ALL MAKES AND MODELS**

**T: 01483 271 421**

**M: 07775 277 277**

ALL MAJOR CREDIT CARDS ACCEPTED INC.



UNIT 5 - CRANLEIGH WORKS - THE COMMON - SURREY - GU6 8RZ  
(BEHIND THE CRANLEY HOTEL)

**WWW.KDBAUTOS.COM**

email: KEITH@KDBAUTOS.COM



# TAILOR-MAD

Come and see us carefully handmade our furnishings  
in our traditional curtain making studio at Smithbrook Kilns.  
Interior Design service available and introductions to  
many other local skilled trades.



## NEW ADDRESS

82b Smithbrook Kilns, Cranleigh, Surrey GU6 8JJ



# E INTERIORS



01483 277474

TAILOR~MADE  
— Interiors —

christina@tailor-madehome.co.uk  
[www.tailor-madehome.co.uk](http://www.tailor-madehome.co.uk)



## Notes for St Nicolas:

### Choral classics, light operetta & musicals Saturday 23 April, 7.30pm -

On 23 April, *Something of Note* will be making a much anticipated return visit to St Nicolas as the first of our 2016 concert season.

The choir's last trip to Cranleigh was back in September 2014 when they wowed the audience with their beautifully polished choral style and varied musical programme – who could forget Alex on saxophone.

Performing choral classics, light operetta and songs from musicals, the evening will include music from the likes of Gilbert & Sullivan, Jerry Herman, Rogers & Hammerstein, Dvorak, Diabelli, Ivor Novello, Brahms and Gershwin.

*Something of Note* will be joined by soprano soloist Susan Piggott, last seen in Cranleigh with her choir, Voci, in July 2015, alongside the choir, the evening will also include piano duets, saxophone and flute solos.

The choir, who are based in Windsor, are delighted to be returning to St Nicolas. The evening is sure to entertain and delight.

**Tickets : Adults - £10  
Children under 12 - £5**

are available from St Nicolas Church Office,  
Church Lane, Handyman Store, 28 The High  
Street, online at

[www.stnicolascranleigh.org.uk](http://www.stnicolascranleigh.org.uk)

**St Nicolas Church, Cranleigh**

## OXBOROUGH



Chartered Surveyors

- Valuations & Surveys
- Property & Estate Management
- Compulsory Purchase & Compensation
- Landlord & Tenant
- Sales & Acquisitions
- Planning & Architectural Services

01483 276688

[office@oxboroughsurveyors.co.uk](mailto:office@oxboroughsurveyors.co.uk)

*Land & Rural Property Specialists*

Collins Court, 39 High Street, Cranleigh  
Surrey, GU6 8AS

[www.oxboroughsurveyors.co.uk](http://www.oxboroughsurveyors.co.uk)

UNIT 1, OLD COMMON  
WORKS, CRANLEIGH, GU6 8RZ

**20%**  
OFF YOUR FIRST WASH!

# Crystal

car wash

**T: 07863 477 137**

**(INSIDE & OUTSIDE)**

**Hand wash**

**Hoover**

**Plastics cleaned**

**Dashboard**

**Windows in & out**

**Door shuts**

**Tyres dressed**

**Free air freshener**

**Car £12.00**

**4x4 / 7-seaters £15.00**

**£5**  
CAR WASH FROM

[WWW.CRYSTALCARWASH.CO.UK](http://WWW.CRYSTALCARWASH.CO.UK)





# AGW

EST. 1981

Roofing & Construction Ltd.

## ROOFING

- Tiling ● Slating
- Guttering ● Chimneys
- All Lead Works
- High Performance Flat Roofing



## CONSTRUCTION

- New Houses ● Alterations
- Extensions ● Maintenance
- Planning / Drawings
- Project Management



SERVING THE LOCAL COMMUNITY FOR THE LAST 35 YEARS

Call us today on : 01483 275592

Email: [info@agwroofing.com](mailto:info@agwroofing.com) Web: [www.agwroofing.com](http://www.agwroofing.com)

Barn End, Rowly Drive, Cranleigh, Surrey GU6 8PN




— 01403 752859 —  
Loxwood, West Sussex

— Traditional —  
Butcher for 30 Years



## Easter's just around the corner

*We'll cut & deliver your orders to your personal requirements*

Local Sussex grass fed beef

Local lamb from Lukyns of Ewhurst  
and Cloutings of Rudgwick

Free range pork from Storrington

Free range duck & poultry

We also produce our own dry cured  
bacon from our free range pork

*Our delicatessen has a full selection of homemade pies,  
cooked hams, salami, pâtés, English & Continental cheeses*

We do our very best to source as many products as  
possible from Surrey & Sussex farms and suppliers






Home deliveries  
Thursdays or Fridays





SURREYESTATES

Trusted, Reliable, Local.



Professional Photos

Floor Plans

EPC's

RightMove

Zoopla

Face to face service

Accompanied viewings

Total support through to completion

0.5%

YES!

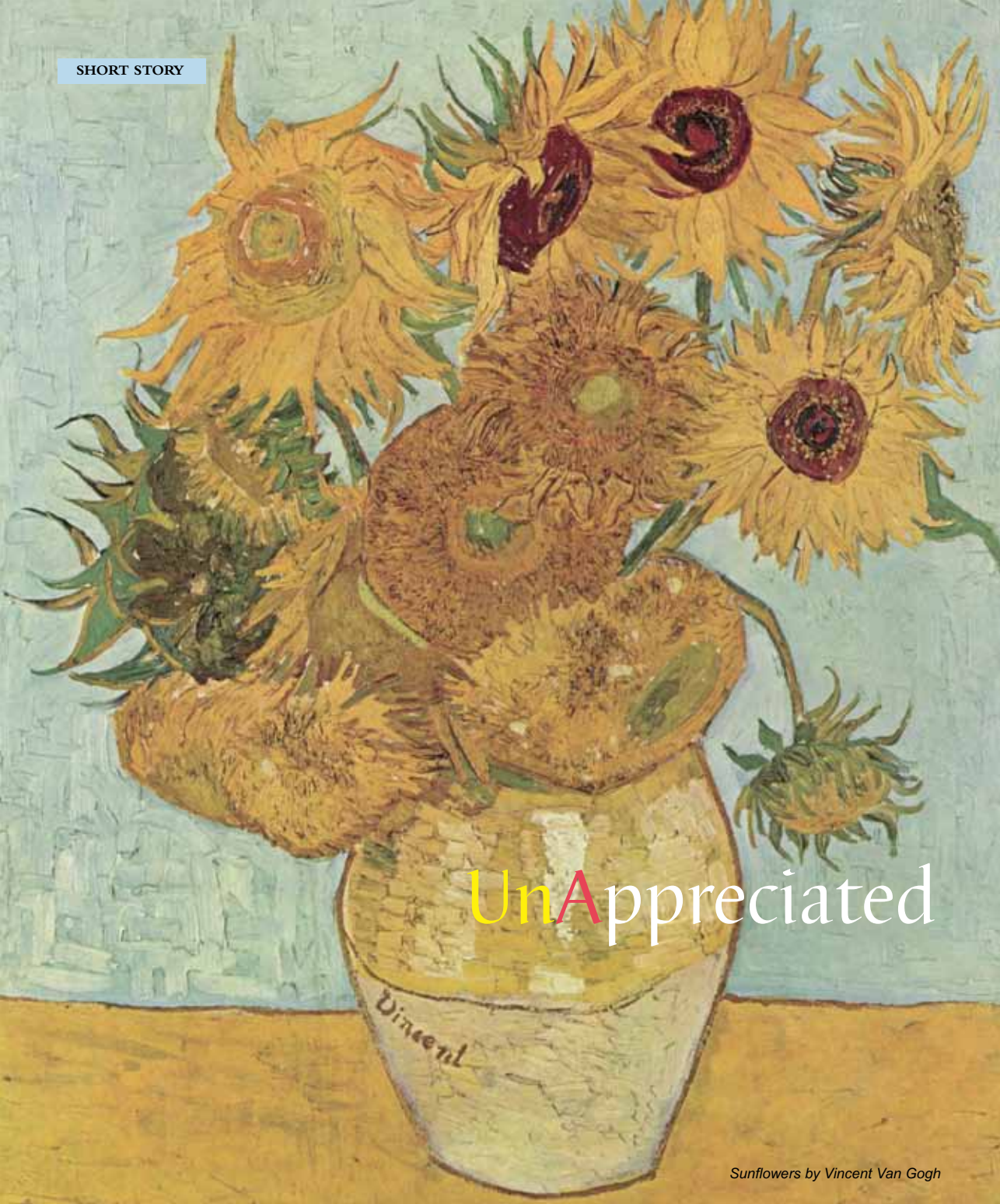
Really!

Receive all of this package  
with your local hybrid estate agent,  
Surrey Estates

01483 478847

info@surreyestates.com

[www.surreyestates.com](http://www.surreyestates.com)



*Sunflowers by Vincent Van Gogh*

# UnAppreciated

**T**he palette clatters to the floor, and he watches it sullenly, running around his stockinged feet in impotent circles, before finally settling in the dust with one last, loud, sour note.

He scratches his beard, quietly irritated. The offending

palette lies flat on its face like a sulking child beneath him, its imagined tantrum his own childish doing.

His gaze drifts back to the table, upon which sit the sunflowers he had carefully picked earlier. His rough painter's hands, each fingertip a grimy variant of the rainbow, had





twitched excitedly when he had happened upon the flowers, with their sunburnt petals of amber and spun gold.

The palette couldn't provide him with the shades he needed, couldn't conjure up the sunflowers fragile stems: an unidentified sickly green that filled him when he gazed at paintings he couldn't hope to imitate in skill. He couldn't replicate the sun drenched yellow he knew belonged atop the sniggering heads of the women that scorned him, nor could he borrow the ruddy brown from the weathered cheeks of the art collector yesterday, his cruel mouth like a torn pocket as he bared his lopsided sneer at his latest efforts.

He buries his head in his hands, his auburn hair poking out haphazardly from in-between his fingers, like errant flames, as he weeps.

### **"What have you drawn, Emily?"**

The nursery assistant asks incredulously, turning Emily's efforts this way and that in a blatant attempt to make sense of the scribbles Emily had sat at her small desk and painstakingly created, only ten minutes before. Emily casts her eyes downwards, her wispy copper curls forming a fragile curtain around her flushed face as a fat tear slides out of the corner of her eye and dribbles down her quivering cheek.

She watches her teacher carelessly toss her immature depiction of the schoolyard sunflowers, onto the growing pile of drawings underserving of praise, and begrudgingly shuffles back to her seat to start again. Just outside the window, the canary bouquets wave at her mockingly from their perch, jeering at her inability to capture their radiant likeness with her scuffed crayons.

The next day, Emily's dad takes her to the art gallery. Emily ogles the imposing building, with wide eyes, and imagines that this must be punishment for being so utterly lacking in artistic skill. The inside is not much better, surrounded as she is by famous artists. She doesn't belong in here. An elegantly dressed lady is giving a talk for those surrounding her latest framed work, her trembling red lips moving at a rapid pace, spittle flying as she grasps her scarce few seconds of fame with gaudily painted talons.

As soon as Emily enters the second room, however, her eyes at once find familiar blonde clusters and green stems waiting for her at the back, and she snatches her hand impatiently from her father's grasp, to race towards her newfound goal, her tiny, excited feet, squeaking unabashedly in the otherwise silent room.

Emily comes to a screeching stop before she can collide with a gallery worker, gesticulating wildly beside her target. She vaguely registers his impassioned speech as she gazes, awestruck, at the faultless imitation of the very flowers she had tried to replicate in her grubby workbook. Emily tunes in to the gallery worker, his rasping voice made beautiful by the things he says.

"... A truly remarkable work of art. Painted by a vision-

ary, driven mad by the hidden splendour only he could see." Here, he paused. "The real tragedy, of course, is that his genius was recognised only after his death. Scorned whilst alive, he is now regarded as one of the most brilliant painters to have ever lived . . ."

Emily gasps, and stands on her tiptoes, straining to see through the legs of the gathered crowd.

"Van Gogh" she lips, through the gap in her two front teeth, reading aloud from the plaque above her head with a secret smile. ■



Sunflowers like to grow in full sun in well-drained soil, and are mainly sown from mid-April to the end of May, to flower in August.

### **What you need**

1. *Pouch of sunflower seeds - remember to check the packet for how tall they're expected to grow.*
2. *Gardening gloves*
3. *A rake*
4. *A trowel*
5. *Plant label and pencil*

### **How to Grow Them**

Make sure the ground you put your seeds into is weed free by removing them with your trowel. Rake the soil until it is fine and crumbly, and make some drills about 12mm deep. Make sure you leave about 10cm breathing room between each seed. Carefully place your seeds in the ground, and completely cover them with soil.

Don't forget to water your plants gently, and make sure they aren't crowded as they grow. If they are, simply thin them out so they are about 45cm apart, leaving the tallest, strongest plants. Watch out for slugs and snails eating your shoots! Protect your seedlings by cutting off the top of a plastic bottle and placing it over them, or try slug pellets if they aren't deterred.

As your sunflowers begin to grow taller than you, their stems will need supporting with a cane loosely tied to the plant with string. Watch your plant grow and grow!

*Cromwell Coffee House-Homemade Food*

# BOOK REVIEW

## A Tale of Two Ships

by  
David Edwards



Many Cranleigh youngsters will remember school trips to the TS Gerald Daniel, affectionately known as the "GD". The ship is a converted Minesweeper that lost its use some five years ago, before being replaced by the TS Resolute. A Tale of Two Ships is the story of both these ships. The book has been completed in time for the 30-year anniversary of the Sailing Centre that was celebrated in September this last year.

The book describes some of the history of two ships used by Christian Youth Enterprises, an Outdoor Activity Centre in Chichester Harbour with roots in Cranleigh. These roots go back 30 years to the founders of the Centre, Cranleigh residents Norman and Rosslyn Doney and David Edwards, among other local people. Since there is no sea at Cranleigh, Cobnor near Bosham in Chichester Harbour is the venue and location of the latest ship, the TS Resolute.

### Where can I get a copy?

Copies of the book can be obtained direct from the author, David Edwards. His address is: 2 Winterfold View, High Street (immediately next door to Jewsons). You can call him on 01483 276860 or on his mobile: 07795620677, or drop him an e-mail: david.edwards@cye.org.uk.

Alternatively, pop into Cranleigh Baptist Church, where it is available at £5.00 or by post at £7.00. The book can also be purchased direct from CYE Sailing Centre, Jubilee Building, Chidham, Chichester, West Sussex, PO18 8TE, e-mail admin@cye.org.uk.

### Some Background on Christian Youth Enterprises Sailing Club

Christian Youth Enterprises Sailing Centre was established in 1985. Originally, programmes were built around young people from churches and youth groups, providing unique opportunities to experience the very best in watersports training and adventure activity holidays. Over the years, the range of activities and age groups has broadened,



with school groups, training courses and residential holidays providing the majority of programmes from April to October.

Following the recent introduction of our new accommodation vessel 'TS Resolute', CYESC is now able to provide programmes throughout the year, from warm weather watersports programmes, through to autumn family weekends, and winter conferences

After 25 years of faithful service, the 'Gerald Daniel' Minesweeper was replaced in 2011 with 'TS Resolute'. This magnificent, multi-purpose accommodation vessel has a lower deck containing 50 beds. Each spacious room has en suite facilities, comfortable bunk beds and, of course, great views. Our limited mobility cabin (main deck) also has en suite facilities with wheelchair access. ■

**CRANLEIGH** t: 01483 346503  
**Clean** www.cranleighclean.co.uk

**Regular domestic cleaning you can trust:**  
ovens, carpets and upholstery, mattresses, end of tenancy deep cleaning, windows, fascias and gutters.

e: robashbee@cranleighclean.co.uk

## Cranleigh Village Care

### Can we help you?

Visits to hospital or health centre, dentist or chemist, collecting shopping, sitting with someone while you go out, etc. Our volunteers offer a caring, friendly service.

### Can you help us?

New volunteers always needed. Please ring for information. (Donations greatly accepted to cover costs.)  
Ring Between 10am and 12 noon, Monday - Friday

T: 079 089 763 94

## ALFOLD MOWER CENTRE

Alfold Mower Centre offers the highest quality of Products and Services on the market today.

t: 01403 751680 m: 07768 453179

nigelbudd@hotmail.co.uk

Dunsfold Road, Alfold, Surrey GU6 8JB



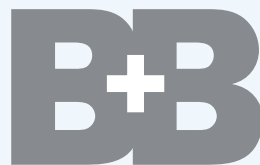
# April



## Jobs to do

**V**egetable growing really takes off this month. Chit and plant out second early potatoes in the first half of the month, maincrop potatoes in the second half. It's also time to sow seed outdoors in well-prepared soil.

- Ideal time to plant pot-grown fruit trees and bushes.
- Chit and plant out second early potatoes in the first half of the month, maincrop potatoes in the second half.
- Sow seed outdoors for beetroot, carrots, Swiss chard, summer cauliflower, kohlrabi, lettuce, leeks, radish, turnip, spring and pickling onions, peas and perpetual spinach in well-prepared soil.
- Try sowing unusual vegetables such as salsify, Hamburg parsley, or scorzonera.
- Sow seed indoors of marrows, courgettes, pumpkins and squash. Also sweet peppers, tomatoes, cucumbers, aubergines, celery, celeriac, salads and globe artichokes.
- In very mild areas sow dwarf French beans and sweet corn outside under cloches or fleece at the end of April. In cooler areas wait until May.
- Transplant broad beans grown in pots.
- Plant shallots, onion sets and garlic.
- Plant Jerusalem artichoke tubers.
- Plant asparagus crowns.
- Pot up tomato seedlings when they develop true leaves above the more rounded seed leaves.



CHARTERED CERTIFIED ACCOUNTANT

**Bernard Brace**

FCCA

A locally based, friendly accountancy company with expertise in Business Structures for new start-up businesses and existing established companies. Why not call us for a **FREE** no obligation consultation.

For more information, contact us on

**t: 01483 267437**

**f: 01483 267384**

**m: 07860 623122**

**Email: [bernard.brace@btconnect.com](mailto:bernard.brace@btconnect.com)**

**52 Smithbrook Kilns, Cranleigh,  
Surrey GU6 8JJ**

## GARDEN MAINTENANCE

### AUTUMN & WINTER

**Borders • Hedges • Lawns**

*Construction / Planting / Filtration*

**01483 272982**

**35 years experience**



**PONDS**



**Emily's  
Elegant  
Cars**

A friendly family run wedding car hire company based in Cranleigh, Surrey where the principles of pride, quality and service are paramount.

**T: 01483 275 158 M: 07816 509315**  
**[info@emilyselegantcars.com](mailto:info@emilyselegantcars.com) [www.emilyselegantcars.com](http://www.emilyselegantcars.com)**

1 BARBER DRIVE, CRANLEIGH, SURREY, GU6 7DG



**LJ West**

**Painter & Decorator**

**m: 07957 361 390 h: 01252 676764**  
**[ljwest8@hotmail.com](mailto:ljwest8@hotmail.com)**

**General Property Maintenance**

**SUE KIDD**

**Architectural Designer MA (RCA)**

- Planning & Building Regulation Drawings
- 25 years Experience ● **FREE** Initial Consultation

**T: 01483 275342 M: 07757 284 457**

**[suekidd1@hotmail.co.uk](mailto:suekidd1@hotmail.co.uk) [www.suekidd.co.uk](http://www.suekidd.co.uk)**







**2 BRIGHT SPARKS**  
 MARK & JON NICEIC APPROVED  
**ELECTRICAL SERVICES**  
 Extra points, fuseboards, refurb, rewiring  
**FREE INSPECTIONS & QUOTES**  
 Call Mark. Cranleigh 276523 Mobile 07770 888570



**G. B FENCING & TREE SURGERY**  
 FREE ESTIMATES FULLY INSURED

- All types of fencing supplied & erected
- Hedge Cutting
- Stump Removal
- Groundwork
- Landscaping
- Roof Moss Removal

TEL: 01403 824048  
 MOBILE: 07714689824

**CHEAP HARDWOOD LOGS FOR SALE**

**GORDON WELLS**  
 CARPENTER JOINER HANDYMAN



14 Plaistow Road, Loxwood,  
 Billingshurst, Sussex RH14 0SX  
**07890 469 231**  
 wellsga@orange.net

# Waller & Smith

## Landscape & Driveway Construction

Patios, Paths, Driveways,  
 Hard Landscaping, Block Paving and Fencing



For all your landscape or driveway construction we produce quality, crafted workmanship at good prices!

**01483 276913**  
**07860 748938**  
 info@wallerandsmith.co.uk  
 www.landscapercranleigh.co.uk

# CRANLEIGH EXHAUST CENTRE Ltd



- SERVICING
- REPAIRS
- DIAGNOSTICS
- AIR CON
- EXHAUSTS
- TYRES
- MOT

**MOT's**

- Cars
- Vans
- Minibuses

Class 4,5 & 7

**Incorporating**  
**Cranleigh Car Clinic 01483 276550**

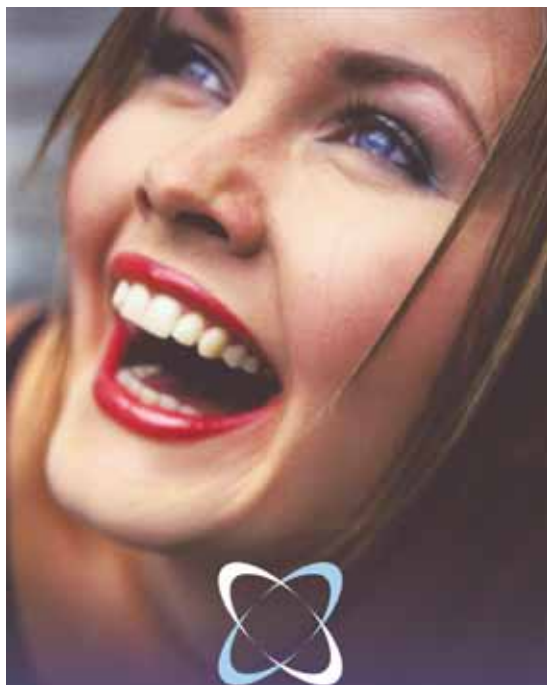

Free local collection and delivery  
**01483 278 060 / 267 759**  
 Unit 7 Manfield Industrial Park Cranleigh Surrey GU6 8PT



# St Nicolas Flower Festival



**PATRON SAINTS**  
**Fri 29 April until Mon 2 May**


**Kelsham**  
DENTAL CARE  
CRANLEIGH

**A friendly caring family dental practice offering quality private dental care**

Nick Green Emma Cotton  
& Associates

- Private
- Denplan
- NHS Children
- New Patients Welcome
- Dental Implants
- Cosmetic Dentistry
- Preventative
- Emergency
- Dental Hygienist
- Smile Whitening

Easy access for elderly and disabled patients



Denplan

**Call: 01483 274552**  
[www.kelshamdentalcare.com](http://www.kelshamdentalcare.com)  
[enquiries@kelshamdentalcare.com](mailto:enquiries@kelshamdentalcare.com)  
The Common Cranleigh Surrey GU6 8SN



## Cranleigh Food Bank

### **In need of EMERGENCY FOOD?**

We are here to HELP!  
Hosted by Cranleigh Baptist Church  
open on  
1st, 3rd and 5th Friday of the month,  
from 10 am to 12pm

Join us at our Drop In Cafe!!

**01483 275371**

email [office@cranleigh.org.uk](mailto:office@cranleigh.org.uk)

**RJ** **IMMISON ELECTRICAL**  
New installations, Rewiring, Extra points,  
Electrical Problems.  
**01483 271608 M:07852 503517**  
Domestic, Commercial, Industrial & Agricultural

## GWYN BULLEN *Gardens*

**DESIGN - CONSTRUCTION  
MAINTENANCE  
RESTORATION - RENOVATION**

**Tel: 01483 548 298  
Mob: 07733 270 625**

Email: [gwynbullengardens@gmail.com](mailto:gwynbullengardens@gmail.com)

## Cranleigh Bathroom Studios Ltd



**T: 01483 272727**

246 High Street, Cranleigh, GU6 8RL  
[craig@cranleighbathroomstudios.co.uk](mailto:craig@cranleighbathroomstudios.co.uk)





# Glebelands School

## Sports Relief 2016

**Glebelands students  
have been brilliant at getting involved**

**Y**ear 9 students organised and ran cake sales in the lead up to the day, raising £250. In the week of Sport Relief the students ran a sponsored Sport Relief mile in PE lessons, additionally students paid £1 on 18th March as part of a mufti day.

Sport Relief wristbands were sold and there was also a staff cake sale which raised over £50. Finally a staff versus students netball match that involved donations from spectators, which was narrowly won by the students! In total the school raised over £1,400

**Mr Rob Whistler**  
**Head of Physical Education**

## Glebelands – Top 100 school in England

**G**lebelands School received some good news from Westminster when they received a letter from the Minister of State for Schools, Nick Gibb MP, congratulating them for their excellent improvement in GCSE results between 2013 and 2015.

They are now one of the top 100 non-selective state-funded schools in England showing the greatest sustained improvement in the percentage of students achieving five or more A\*- C grades, including English and mathematics GCSEs.

'I am delighted that the commitment and hard work



of our students, staff and governors has been rewarded with this fantastic achievement. We will continue to build on this to ensure that our students achieve the best results they are capable of and are fully prepared for the next stage of their education' said Headteacher, Mrs Hutchinson. ■

**Mr Stefan Radwanski** *Head of Science*







# Cranleigh

## .. a little revealed history

Once more the Cranleigh Obelisk is looking smart again. Stonemasons have just spent two weeks working on the monument to complete in good time for Cranleigh In Bloom that will take place next month.

Having achieved a Silver Gilt Award for the S. E. Region of 'Briton In Bloom', supporters were anxious to keep up the standard of display and were delighted with the response by Waverley Borough Council in making such an improvement to Cranleigh's historic monument.

The Obelisk has an interesting history starting in 1794 when first built and as a watering place for the village. Just twenty four years later the monument served as the ideal place to display important road signs produced by J.Champion Foundry, a local blacksmith in 1818.



*The signage is taking shape*



*Rust has set in*

*The work begins*



*Restoration complete*

This was a significant year as it marked the opening of a new turnpike road between Guildford and Horsham. It is thought that the inclusion of Windsor and Brighton related to the journey taken by the Prince Regent being 31 miles from Windsor Castle and a further 31 miles to his Brighton Pavilion. The journey would have been over the two years before being crowned George IV so leaving Cranleigh with the legacy now clearly recorded on it's 200 year old obelisk.

**Michael Wild 01483 274398** email: [mamwild@aol.com](mailto:mamwild@aol.com)





# Art of Cooking

for friends or family

## RECIPES

In step with this issue's 'Art of Cranleigh' theme, aimed to celebrated the various aspects of creativity within our lives, this recipe is no exception! It is designed to inspire you to enjoy the preparing, cooking, table presentation and the final meal itself as a complete art form - far beyond the mundane day-to-day sustenance! Why not don your apron and try it!

### Galia Melon with "Prosciutto di San Daniele"

#### Ingredients

2 ripe Galia melons

4 slices of St Daniele or Parma Ham. (make sure it is not cut too thinly)

1 Cucumber.

2 medium sized tomatoes

Olive oil, lemon juice, salt, and pepper

#### Method:

1. Crown cut the melons across the middle and empty them of seeds
2. With a small ball cutter, make 12 melon balls and leave them inside each melon case
3. Cut the ham, and the cucumber, in to a julienne (fine strips)
4. Blanch, peel, and deseed the tomatoes, before cutting them also (in to a julienne as before)
5. Fill the half melon with the julienne (sliced ham, cucumber, and tomatoes), and dress with the oil, lemon, salt, and pepper
6. Serve with buttered oatcakes

Should you require a wine with this course, Prosecco di Valdobbiadene is a great choice



Cromwell Coffee House-Homemade Food

[www.cranleighmagazine.co.uk](http://www.cranleighmagazine.co.uk)





## Breasts of ducks (magrets de canard) alla piccantina.

### Ingredients

4 medium sized duck breasts  
1 carrot  
1 stick of celery  
1 top of a leek  
1 orange (+ one sliced for dressing)  
1 lemon  
1 small root of fresh ginger  
20 grams of butter  
60 grams of soft brown sugar  
1 vegetable stock cube  
80 mill of Port or Madeira  
A thickening agent (I use BISTO granules)  
Some balsamic vinegar (ad lib)

### Preparation

1. Make some 3 or 4 incisions on the skin of the duck breasts, just enough to reveal the flesh.
2. Roughly chop the vegetables and place them on an oiled oven tray (metal).
3. Place the duck breasts over it and cover them with half the sugar and the balsamic vinegar.
4. Cook it in a hot oven (180°C - gas mark 4) for 25 minutes. Let them set on a separate dish.
5. Wash, peel and grate the ginger and boil it in little water until soft (20 min).
6. Place the zest of the orange and the lemon in a pan with the butter and lightly fry it for a few minutes then add the ginger and its cooking juice plus the juice of the orange and the lemon. Reduce by 1/3 and set aside.
7. Place the roasting tray with the vegetables on a fierce heat. When most of the liquid has evaporated, discard most of the fat and add half the Port followed by the diluted stock cube (250ml). Bring to the boil and strain on to the orange and ginger mix.

8. Boil it all for 10 minutes then add the BISTO granule to thicken the sauce to the desired consistency.

9. Slice the duck breasts aslant and dress them on a meat dish, pour over some of the sauce, garnish with slices of Orange, watercress and a finely chopped fresh herb of your choice (sorrel works well).

Serve with roasted small potatoes and root vegetables and plain steamed Broccoli florets.

A favourite wine with this dish is BAROLO



## AFFOGATO (Umbriaco) serves 4 (Drowned drunk)

### Ingredients

300g of coffee ice cream  
160 ml of strong hot coffee  
(ideally 4 double espressi)  
4 hard amaretti biscuits  
80 ml double cream

### Preparation

1. Divide the ice cream into 4 separate coupes.
2. Place on top of each of the hard amaretti.
3. Pour on each equal amount of cream, liqueur and coffee.
4. Serve at once with a wafer fan.

**Giovanni Fontebasso**  
**Buon Appetito**



# Creative Brand Design

**01483 277 547**  
www.cbwebsitedesign.co.uk

## RANK YOUR WEBSITE ON SEARCH ENGINES



MOBILE FRIENDLY, SEO OPTIMISED WEBSITE DESIGN  
WITH EMAIL SETUP & WEB HOSTING



**CRANLEIGH  
TAXIS**

T: 01483 277223

Cranleigh's Number 1

taxi company for local, airport & long distance trips

e: office@cranleightaxis.co.uk www.cranleightaxis.co.uk

For Wedding Dress sales & enquiries.  
Dress & Tailoring alterations

CRANLEIGH *Bridal*

**01483 274853**

PAINTER & DECORATOR

**CRAIG PIERCE**

www.cpdecorating.co.uk

**07941 869503 01483 299610**

**DAVID HOWICK LANDSCAPES**

- GENERAL LANDSCAPING
- GARDEN DESIGN, CONSTRUCTION
- GARDEN CLEARANCE & MAINTENANCE
- FENCING
- TREE SURGERY
- HEDGE CUTTING

References Available

**FULLY INSURED**

TEL: 01403 752110

MOB: 07889 853024



**titchmarsh  
TREE SURGERY  
SERVICES**

- Landscaping • Tree Surgeons •
- Stump Removal •
- Hedge Cutting / Planting • Fencing •
- Rubbish Removal •

**T: 01483 892 939 M: 07814 211671**  
**T: 01403 752 152**

info@titchmarshtreesurgery.co.uk

www.titchmarshtreesurgery.co.uk

30 Years Experience References Available



*D.C. Ball* Est. 1970

**Horological Restoration**

Clock and watch sales. Watch straps and batteries fitted while you wait!

**T: 01483 898 277**

jeandgball@aol.com

20 High Street, Bramley, Surrey, GU5 0HB



**Buy and sell antiques!**

**Keith Skerry**

HOUSE CLEARANCE  
& RUBBISH DISPOSAL

**T: 01243 264 556 M: 07929825901**

k.skerry@btinternet.com

19 Strathaven Close, Cranleigh, Surrey GU6 8PW





# Cranleigh Funerals



COMPLETE FUNERAL FURNISHERS -  
PRIVATE CHAPELS - MONUMENTAL MASON

'A caring privately owned independent family business'

**01483 275 758** (24hrs)

IMMEDIATE ATTENTION DAY OR NIGHT

Sussex House, Ewhurst Road, Cranleigh, Surrey GU6 7AE



**DART**  
DESIGN

creating  
ideas,  
logos,  
print,  
advertising,  
publicity  
material,  
exhibitions,  
packaging,  
web design

**Art & Design**

on **01483 275054**

inform@dartdesign.co.uk [www.dartdesign.co.uk](http://www.dartdesign.co.uk)

*Buttons and Bows*

Dressmaking and Alterations

**01483 267767**

Helen Kolmar

[helen@buttonsandbows.info](mailto:helen@buttonsandbows.info) [www.buttonsandbows.info](http://www.buttonsandbows.info)

Unit 2 The Old Bakery, Kent House, 91 High St, Cranleigh, Surrey GU6 8AU

**Janet Mitchell**



Art Classes, Walliswood  
Village Hall, Monday 2-4pm  
Beginners welcome.

Ring and book a class!

**01306 627 322**

email: [jamit37@btinternet.com](mailto:jamit37@btinternet.com)

Friendly atmosphere. Tea is provided.

**MEMORIES**

**Collectables & Antiques**



At 'Memories', you will find an eclectic mix of Vintage, Retro, up-cycled and Shabby Chic pieces; pre-loved decorative items, Clock and Mirrors, Ceramics and Glassware, Standard lamps, Coins and Stamps, and a selection of ever-changing

**01483 277488** treasures that are Edwardian, Victorian, or earlier!

**07549 991140**

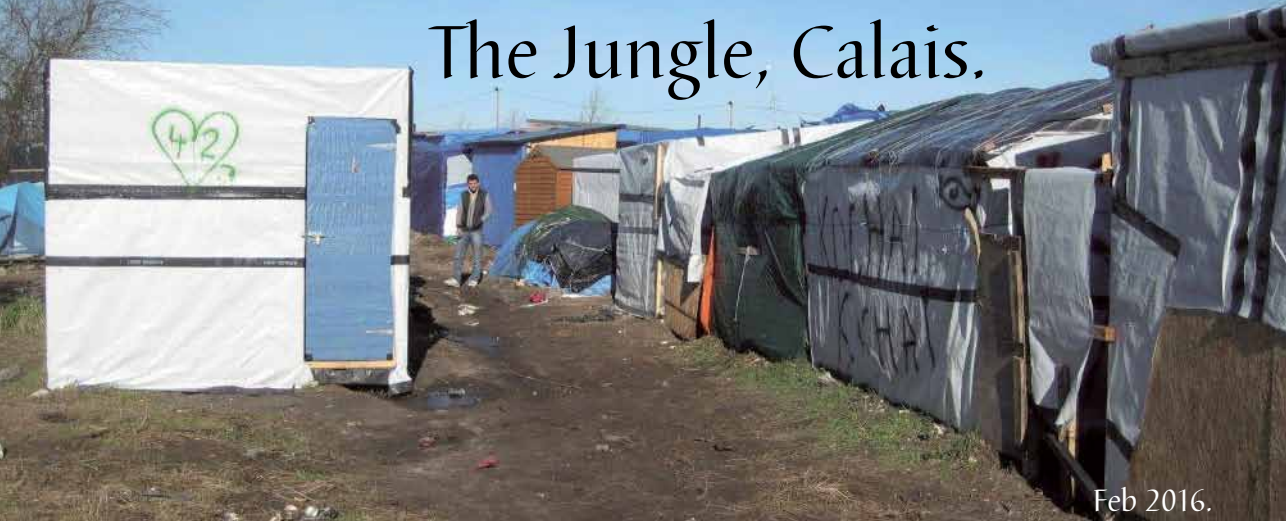
[colum@cillchua.plus.com](mailto:colum@cillchua.plus.com)

2 Smithbrook Kilns, Cranleigh, GU6 8JJ

**OPEN 10am-4:30pm**  
Tues-SAT  
(Closed Mon & Sun)



# The Jungle, Calais.



*A walkway at the Jungle camp, Calais*

**F**our members from Cranleigh Baptist Church recently went to Calais to see first-hand the situation in the illegal settlement with 6000 people who have set up camp in the sand dunes adjacent the ferry port now known as the Jungle. This was to be an exploratory trip to see the requirements and needs of the unfortunate people, mostly young men, who had fled their homes far away with the intention of entering the UK for a better life.

It would soon become evident that the refugees fleeing their countries came from Syria, Iraq, and Afghanistan was to get away from persecution, violence, bombing and the effects of war. However, it was difficult to understand why sections of the camp were occupied with Ethiopian, Eritreans and Sudanese from much further away in Africa. Apparently all these countries have governments and regimes where people are persecuted to the point of exodus is necessary to survive. Getting to Calais is a series of life risking events and they remain desperate in trying to board lorries and trains to arrive in UK – their goal. They remain a problem to UK, France and the countries they have entered – but never the less are human beings with needs to be met – they cannot just disappear in the ether.

We linked up with a charity called Care for Calais who run an operation which supplies essential needs for living and surviving in the camp from two warehouses near Sangette. UK churches, charities, social care groups and individuals are taking items such as sleeping bags, food, shoes, clothes and supplies for camp living. Indeed because we arrived at school half term over there were nearly 100 people willing to support the operation and a large backlog of aid was sorted for distribution. It's quite a large undertaking looking after 6000 campers who are staying in the Jungle. We further met up with a French couple who were supplying bottled gas and taking in washing for campers. Yes there are no laundrettes in the Jungle! – not something you much think about. The French government are supplying water, chemical toilets and refuse collections.



*Helping to sort through the aid boxes at the camp in Calais*

Our group were able to go into the Jungle and distribute the aid and talk with refugees – this to encourage and support them in life where possible. We were able to walk about safely and the refugees were very welcoming and pleased to tell their stories – indeed part of the camp has a High Street (known as Edgeware Road) with a few shops and an even a restaurant.

It is difficult to see an answer to their plight given their status and situation – the Jungle is about to be demolished and the refugees rehoused in camps around France while their cases are waiting to be sorted out by the authorities – all probably a better existence than whence they came. Sorry there are no answers. ■

**Dave Saunders**

## Investec International Music Festival 2016 Tickets now on sale!

The Investec International Music Festival 2016, one of the region's cultural highlights will take place across the Surrey Hills from 5-7 May 2016. With a star studded 'not to be missed' line-up that includes: Nicola Benedetti, the world renowned classical violinist; the much acclaimed Dmitry Sitkovetsky and Clare Teal!

**For more information contact:**

**Jane Newick, The Wordbox,**  
t: 01483 243671 m: 07907 566773  
jane@thewordbox.com





## Cranleigh Arts Centre April 2016

### Comedy: Einen Eveningen mit das Henning Wehn

**Friday 1 April, 8pm**

Join the German Comedy Ambassador for Teutonic jolliness at its best. Expect some old favourites and plenty of new ideas. Some might call it work-in-progress but Henning prefers to describe it as masterpiece-under-construction.



### Children's Workshop: Dinosaur Collage

**Saturday 2 April, 11am – 12.30pm**

In preparation for our film screening of Pixar's *The Good Dinosaur*, we are running a workshop where children can create their own dinosaur collage! Create colourful, crafty, prehistoric beasts with former Artist in Residence, Shivani Khoshia. This workshop is for children of all ages and all children must be accompanied by an adult.

### Adult Workshop: Floral Crochet Workshop

**Tuesday 5 April, 10:30am – 12:30pm**

Throughout the months of May and June flowers will be springing up in Cranleigh Arts Centre's Gallery to form the Floral Fringe exhibition (or Florilegium), in association with RHS Wisley, as part of the annual "Cranleigh in Bloom" event. In preparation for the exhibition, Vicki Hodge, of Smith Brook Kilns' The Crafting Place, will be running a Floral Crochet Workshop. Participants will be able to learn how to crochet flowers, which will be included in the Gallery's Florilegium exhibition.

### Film: The Good Dinosaur (PG)

**Tuesday 5 April, 2pm**

Luckily for young Arlo, his parents and his two siblings, the mighty dinosaurs were not wiped out 65 million years ago. When a rainstorm washes poor Arlo downriver, he ends up bruised, battered and miles away from home. Good fortune shines on the frightened dino when he meets Spot, a Neanderthal boy who offers his help and friendship. Together, the unlikely duo embark on an epic adventure to reunite Arlo with his beloved family.



### Royal Opera House Live: Giselle (Ballet)

**Wednesday 6 April,  
7:15pm**

*Giselle* is the quintessential Romantic classic, a love affair that begins in the real world and continues beyond the



grave. The ballet's title role also offers one of the great challenges of the ballet repertory, as *Giselle* transforms from an innocent peasant girl, duped into love, to a forgiving spirit who saves her lover from death.

### Film: Brooklyn (12A)

**Thursday 7 April, 8pm**

An Irish immigrant lands in 1950s Brooklyn, where she quickly falls into a romance with a local. When her past catches up with her, however, she must choose between two countries and the lives that exist within.



### Exhibition: Three's Company

**Daily from Tuesday 12 –**

**Saturday 23 April in the Gallery**

An exhibition of collage, pastel painting and photography by three artists. John Newsham's photography explores toys, the overlooked and mirrors of our past selves. Beth Osler presents collages inspired by the work of Paul Klee and Islamic geometry and Owen Osler's pastel paintings examine themes of intimacy, endurance and hope.



### Classical Music:

**Glain Dafydd - Harp**

**Wednesday 13 April,  
7.30pm**

Glain Dafydd's career has taken her across Europe for concerts, competitions and studies, appearing at venues such as the British Embassy in Paris, RFH (MMSF) and touring in the USA with the Penrhyn Male Voice Choir. Glain will present the following programme: Sonata for Harp "The Lass of Richmond Hill" by Dussek; 1st and 2nd Arabesques by C. Debussy; Toccata in A Major by Paradisi; Sonata for Harp by Hindemith; Santa Fe Suite by Mathias; Sicilienne Variée by Damase; Légende by Renié



### Exhibition On Screen:

**Girl with a  
Pearl Earring**

**Thursday 14 April, 7:30pm**

The world's fascination with Johannes Vermeer's works was sparked by Tracy Chevalier's remarkable 1999 novel *Girl With A Pearl Earring*. Peter Webber's subsequent 2003 drama, starring Hollywood stars Scarlett Johansson and Colin Firth, further heightened interest in Vermeer's arresting and enigmatic portrait that has been described as northern Europe's very own Mona Lisa. This documentary seeks to answer some of the unsolved riddles that this extraordinary painting evokes.





**Film: Bridge of Spies (12A)****Friday 15 April, 8pm**

During the Cold War, the Soviet Union captures U.S. pilot Francis Gary Powers after shooting down his U-2 spy plane. Sentenced to 10 years in prison, Powers' only hope is New York lawyer James Donovan (Tom Hanks), recruited by a CIA operative to negotiate his release. Donovan boards a plane to Berlin, hoping to win the young man's freedom through a prisoner exchange. If all goes well, the Russians would get Rudolf Abel (Mark Rylance), the convicted spy who Donovan defended in court.

**Film: The Dressmaker (12A)****Wednesday 20 April, 8pm**

A glamorous woman, Myrtle 'Tilly' Dunnage, (Kate Winslet) returns to her small town in rural Australia. With her sewing machine and haute couture style, she transforms the women and exacts sweet revenge on those who did her wrong.

**Live Music:****Underhill Rose  
Saturday 23 April,  
8.30pm**

Making their very first visit to UK, this truly delightful Americana female trio from North Carolina, USA are sure to win many hearts and new fans on this side of the Atlantic.



"A dazzling fusion of Country, Bluegrass, Pop, and even Tin-Pan Blues" Music Nashville

**Royal Opera House  
Delayed Live Screening:  
Lucia di Lammermoor****Thursday 28 April, 7:15pm**

Lucia di Lammermoor tells the story of an on-going feud between two families in 17th century Scotland that has terrible consequences for two young lovers. It contains what is undoubtedly one of opera's most poignant and gripping mad scenes, and is regarded as one of Donizetti's finest works. The opera has not been seen at the Royal Opera House for more than a decade, so this new production by Kate Mitchell will be a particularly important and exciting event. The title role will



*Cromwell Coffee House-Homemade Food*

be sung by Diana Damrau, with American tenor Charles Castronovo taking the role of her lover, the reckless and passionate Edgardo.

**Film: Carol (15)****Friday 29 April, 8pm**

Therese Belivet (Rooney Mara) spots the beautiful, elegant Carol (Cate Blanchett) perusing the doll displays in a 1950s Manhattan department store. The two women develop a fast bond that becomes a love with complicated consequences.!

**Live Music:****The Blues  
Band****Saturday 30  
April, 8.30pm**

Without doubt the UK's premier blues band over



4 decades. The all-star line-up comprises Cranleigh Arts Centre's honorary patron Paul Jones, together with Dave Kelly, Tom McGuinness, Gary Fletcher, and Rob Townsend. They usually perform at much bigger venues, so don't miss this superb and very entertaining band in the intimacy of Cranleigh Arts Centre.

01483 278000 (Tues-Sat 10am-4.30pm) or visit [www.cranleighartscentre.org](http://www.cranleighartscentre.org)

For further information or images - please contact: Jane Howard on **01483 278001** or email [jane@cranleighartscentre.org](mailto:jane@cranleighartscentre.org)

Sign up to our e-newsletter / facebook / twitter

# Artist of Cranleigh

William Heath Robinson

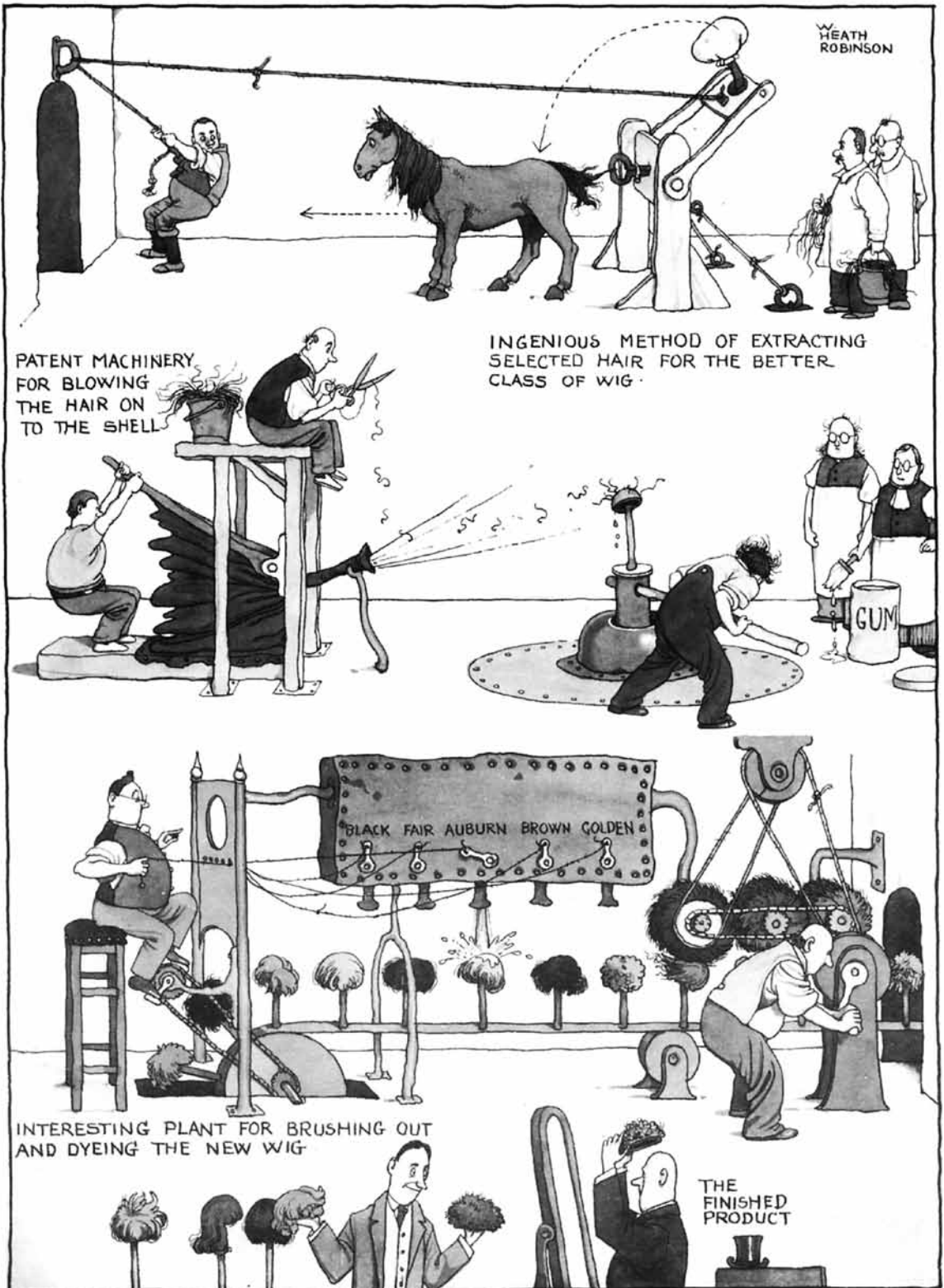
(31 May 1872 – 13 September 1944)

Heath Robinson's main employment was in providing a unique brand of humour to magazines and advertising-supplemented by various commissions for fantasy illustrations. He drew inspiration from people he met and the places where he lived.

In the 11 years Heath Robinson lived in Cranleigh he became a part of the community, especially in regards to his eldest son Oliver who attended Cranleigh School.

He drew for the school, a poster advertising the 'Lads v Dads' cricket match on June 3 1922, and also drew posters for the prep school plays.

Whatever the weather, Heath Robinson walked down the Horsham Road every day, along the street, to the post office on the corner of Knowle Lane, and home again. Cranleigh was ideal for long walks, on which he perhaps processed his artistic ideas that we can now enjoy today.



Sidelights on the Wig Industry



## Rowleys Centre for the Community

Rowleys provide a friendly and welcoming atmosphere for all its visitors. It's a great place to meet up with friends, enjoy a meal or one of our activities. You can also sign up to go on one of our popular day trips or weekend breaks.

There is no age limit at Rowleys, we welcome everyone of all ages to come along. Our regular visitors come from all around the Cranleigh district which includes Dunsfold, Bramley, Ewhurst, Shamley Green, Ellens Green, Alfold and Rudgwick but if you live a little further afield and would like to come along, there are no restrictions.

**We have a couple of spaces left for our SPRING BREAK, April 22nd to April 25th visiting the beautiful Jurassic Coast - staying at the Fairhaven Hotel in Weymouth right opposite the beach.**

**The cost is £224 per person.**

**Please see Gary in the office if you are interested in going along.**

### Services available:

- Chiropody ● Hairdressing ● Beauty treatments
- Lunch restaurant and snack bar ● Scrabble
- Films ● Brain teasers ● Yoga (Tues & Thurs Eve.)
- Sunfit Senior exercises ● Arts and Crafts

Room-hire available on some afternoons, evenings and weekends for your events including parties and weddings,

christenings, business meetings, training days, funeral wakes.

Contact the office for details. **01483 277155** or  
Email: [info@rowleyscranleigh.co.uk](mailto:info@rowleyscranleigh.co.uk)



## Looking for a challenge or a new interest in 2016?

**Could you be the difference in our local community by becoming a volunteer first aider with St John Ambulance?**

No experience is necessary as all training is provided – the Cranleigh Unit is just looking for people who have a desire to help others. The highly trained volunteers provide first aid cover at many local events, and attend weekly meetings to practice and develop their first aid skills through scenario based training. By becoming a volunteer you could be the difference between a life lost or a life saved.

Anyone interested in joining the Cranleigh Adult Unit (18+ years) is welcome to pop into St John House, Littlemead Industrial Estate, on a Tuesday evening at 7.45pm.

To find out more, or for more information call  
Gerry McAteer, Unit Manager, on 07766 733680.  
[www.sja.org.uk](http://www.sja.org.uk)

<b>TRADITIONAL</b> HANDS ON  <b>T: 01403 273361</b>	<b>Window Cleaners</b> <ul style="list-style-type: none"> <li>● Est. 1991</li> <li>● Trustworthy Reliable</li> <li>● Quality Service Inside &amp; Out</li> <li>● All types of Windows &amp; Gutters</li> <li>● Cranleigh &amp; All Areas</li> </ul>  <b>M: 07980 394 957</b> 
---	--



## ATTENTION 4X4 OWNERS

We have 26 years experience of Jeeps, Land Rovers, Toyota, Mitsubishi and other 4x4's and can give you all the support you need from servicing and mechanical repairs through to restorations and customising

**Alfold Road, Dunsfold, Surrey. GU8 4NP**

**T: 01483 200046**  
[www.surreyoff-road.com](http://www.surreyoff-road.com)







**lcc Cleaning Services**  
COMMERCIAL & PRIVATE

- Carpets
- Conservatories
- Windows
- Soffits & Guttering
- Contract Office Cleaning

'Cleaner by far'

**www.lcccleaningservices.co.uk**  
info@lcccleaningservices.co.uk

**For FREE estimates call us on**

**t: 01483 268 617**  
**t: 01403 256 744**

**Laurence Tyrrell**  
Soft Landscaping

Hedge Trimming

Garden Services & Home Maintenance  
01483 271049 07779 929 845  
lpt@gmail.com www.lptgardenservices.com



**ROSS GAS HEATING AND PLUMBING**

BOILER BREAKDOWNS & SERVICING

LANDLORD CERTIFICATES 301585

**TEL: 01483 268660 MOB: 07970 678354**



**Patrick Normand**  
Kitchens, Bathrooms & Cupboards  
Stone & Marble Specialist  
Carpentry, Plumbing and Electrical

For friendly advice, design ideas and a competitive quote  
Call Patrick: 0771 0023 646 | Evenings: 01483 278334  
Email: patrick.normand@limeone.net

**JC Auto Finishers Ltd**  
info@jcautofinishers.co.uk

All aspects of car body work undertaken from dents and insurance work to complete resprays and remodelling.

**01483 268111**  
www.jcautofinishers.co.uk

Unit 1, Home Farm, Baynards Park Estate, Cranleigh, Surrey, GU6 8EQ



## Local information

### LIBRARIES

#### CRANLEIGH LIBRARY

High Street, Cranleigh. **Tel. 0300 200 1001**

Mon. closed all day  
Tues. 9.00 a.m. to 7.00 p.m.  
Wed. 9.00 a.m. to 5.00 p.m.  
Thur. 9.00 a.m. to 5.00 p.m.  
Fri. 9.00 a.m. to 5.00 p.m.  
Sat. 9.00 a.m. to 5.00 p.m.

#### BRAMLEY LIBRARY

High Street, Bramley. **Tel. 0300 200 1001**

Mon. closed all day  
Tues. 10.00 a.m. to 5.00 p.m. Wed. closed all day  
Thur. 2.00 p.m. to 5.00 p.m.  
Fri. 10.00 a.m. to 5.00 p.m.  
Sat. 10.00 a.m. to 4.00 p.m.

### CHURCHES & CLERGY IN CRANLEIGH

#### Church of England

*Rev. Roy Woodhams.*

The Rectory, High St. **01483 273620**

#### Roman Catholic

*Father David Osborne*

St Nicolas Avenue **01483 272075**

#### Methodist

*Rev. Dr. Claire Potter*

Church Office, High St. **01483 273227**

#### Baptist

*Rev. David Burt*

Church Office, High St. **01483 275371**

#### Free Church

*Mr Cyril Wearn*

Alfold Chapel, Alfold Road, Alfold **01403 752167**

### CITIZENS ADVICE

#### WAVERLEY CRANLEIGH BUREAU

Village Way - Cranleigh **0344 848 7969**

Monday, Tuesday & Thursday  
10.00 a.m. - 4.00 p.m.

**Peter Weston**



**Tel: 01483 560028**  
**Mob: 07899 800330**

**THE PAINTER & DECORATOR**



**WILL POWER**

Electrical Installations

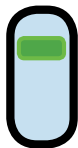
**YOUR LOCAL ELECTRICIAN**

Daytime - 07740 42 73 42 Cranleigh - 01483 26 86 46

**willpowerelectrical.co.uk** **ESTABLISHED 1994**



# Helpful Telephone Numbers



## PHYSIOTHERAPISTS & OSTEOPATHS

Cranfold Physical Therapy Centre  
**01483 267747**  
Cranleigh Osteopathic Practice  
**01483 268628**  
Cranleigh Chiropractic Clinic **01483 200358**

## PODIATRISTS / CHIROPODISTS

Cranfold Physical Therapy Centre  
**01483 267747**  
Cranleigh Foot Clinic **01483 276178**  
Mrs R.A. Wimbledon SRCh **01483 277505**

## DOCTORS AND SURGERIES

Cranleigh Medical Practice **01483 273951**  
Loxwood Surgery **01403 752246**  
Rudgwick Surgery **01403 822103**  
Wonersh Surgery **01483 898123**  
Shere Surgery & Dispensary **01483 202066**  
Cranleigh Village Hospital **01483 782400**  
Royal Surrey County Hospital **01483 571122**

## CHEMISTS / PHARMACY

Cranleigh Pharmacy **01483 274323**  
Rudgwick Pharmacy **01403 823791**  
Boots/Boots High Street **01483 276799/01483 274323**

## DENTAL SURGERY

Warren House Dental Practice **01483 274664**  
Cranleigh Dental Centre **01483 268999**  
Kelsham Dental Practice **01483 274552**

## VETERINARY

Brookmead Veterinary Surgery **01483 274242**  
Alfold Veterinary Surgery **01403 753500**  
Yew Tree Veterinary Centre **01483 361926**  
Hunters Lodge Veterinary Practice  
**01483 276464**

## COUNSELLING

Citizens Advice Bureau **0844 8487969**  
New Directions Counselling **01483 268008**  
Horizon Counselling & Consultancy Services  
**01483 275999**

## RESTAURANTS IN CRANLEIGH

Meghalaya Restaurant **01483 277145**  
Ask Cranleigh **01483 271555**  
Take It To The Table **01483 274036**  
The Curry Inn **01483 273992**  
Rania Restaurant **01483 267800**  
The Richard Onslow **01483 274922**

## EMERGENCY

Police (Emergency) **999**  
Police (Non-Emergency) **101**  
NSPCC **0800 800500**  
National Missing Persons **0500 700700**  
Rape & Sexual Abuse Support Centre (RASASC) **0808 8029999**  
Crimestoppers **0800 555111**  
Childline **0800 1111**  
RSPCA **0300 1234999**  
Samaritans **0845 7909090**  
NCT Helpline **0300 3300770**

## TRAVEL

AA Emergency Breakdown **0800 887766**  
Flight Enquiries for Gatwick **0844 8920322**  
Flight Enquiries for Heathrow **0844 3351801**  
National Rail Enquiries **0845 7484950**  
RAC Emergency Breakdown **0333 2000 999**

## LEISURE

Cranleigh Leisure Centre **01483 274400**

## LOCKSMITHS

Locksmith Godalming-24/7 **01483 320143**  
Be Safe Security Ltd **01483 860708**

## HELPLINES

Surrey Drug Care **01483 300112**  
Age Concern Waverly **01483 548812**  
Alcoholics Anonymous **0845 7697555**  
Citizens Advice Bureau **0344 848 7969**  
Cranleigh Community Line **01483 267999**  
Cruse Bereavement Care **01483 565660**  
Legal Line **0906 5534545**  
Victim Support /Surrey) **0845 3899528**

## CHARITIES

Cranleigh & District Lions Club **0845 8332711**  
Cranfold Job Seekers Club **01483 272252**  
Ewcare **01483 277606**

## COUNCILS

Cranleigh Parish Council **01483 272311**  
Surrey County Council **0845 6009009**  
Waverley Borough Council **01483 523333**





**M.E.S** 01483 351 964

[www.mescranleigh.co.uk](http://www.mescranleigh.co.uk)

Servicing  
Repairs  
Diagnostics  
MOT Testing  
Recovery



**Full Valeting Centre**



**Full MOT Bay**



**New Customers  
10% Labour  
Discount**

**COURTESY  
WASH & VAC  
WITH EVERY  
VEHICLE SEEN**



**11 Courtesy Cars Available**

**MOT's**

**Free Collection & Delivery**

**Bodywork & Paintwork Repair**

**Full Diagnostics**

**10 Bay / 8 Ramp Facility**

**Vehicle Recovery**

**Full Valeting Centre**

Mechanical Engineering Services, Vastbridge Cottage, Alfold Road, Cranleigh, Surrey, GU6 8JS





# BROOKMEAD VETERINARY SURGERY



## “Giving new life to your pets”

Numerous studies show that K-Laser Therapy can help relieve pain, reduce swelling, and increase range of movement. We also offer K-Laser therapy after operations to encourage wound repair.

After their pets had a course of K-laser therapy, clients said,

“He no longer needs anti-inflammatory drugs and now wants to play again”

Head Nurse Kerry-Anne  
demonstrating K-Laser Therapy

## 01483 274242

[www.brookmead-vets.co.uk](http://www.brookmead-vets.co.uk) email: [info@brookmeadvets.com](mailto:info@brookmeadvets.com)



Brookmead Veterinary Surgery-follow us on Facebook

ref=ts

**Brookmead Veterinary Surgery, Horsham Road, Cranleigh, Surrey, GU6 8DL**

Established over 50 years