

MAY 2016 ISSUE 7



# CRANLEIGH MAGAZINE

# Maybe Cranleigh

A magazine and website for Cranleigh and the surrounding areas  
[www.cranleighmagazine.co.uk](http://www.cranleighmagazine.co.uk)

# CROWES

EST. 1991



## The Street, Ewhurst

£410,000

A charming semi-detached period cottage with many period features such as inglenook fireplace and exposed oak beams. The property also benefits from a stylish modern kitchen and a luxurious bathroom. There is a courtyard garden to the rear and a well screened frontage that provides plenty of parking. EPC Band E



## Smithbrook Kilns, Cranleigh

£1,095 - £1,350pcm

Available to rent - a newly converted development of individual luxurious one and two bedroom apartments boasting many character features, with modern and stylish fittings and finishes throughout. Situated on the outskirts of the village and easily accessible to both Guildford and Horsham. EPC Band D.



Sales, Lettings & Property Management

Tel: 01483 267181 | Email: [info@crowesproperty.com](mailto:info@crowesproperty.com) | [www.crowesproperty.com](http://www.crowesproperty.com)



# contents

May 2016

## CRANLEIGH MAGAZINE

**WELCOME** to Cranleigh Magazine in the month of May. As the weather begins to change, getting warmer, we see foliage and plants come into bloom, growing and glowing with life and colour. Maybe Cranleigh is the place to live and be as it reflects these qualities.

Cranleigh Magazine is a unique publication compared with other everyday magazines. Partnered with its sister website - [www.cranleighmagazine.co.uk](http://www.cranleighmagazine.co.uk) - it creates a connection with people through their work and social networks. Take a look at our website and register your business or enjoy reading some of our exclusive articles.

Why not submit your local news to the Magazine or advertise your business, keeping people informed and connected in 2016.

Contact 01483 275054 or email: [paul@cranleighmagazine.co.uk](mailto:paul@cranleighmagazine.co.uk)

- 4 The Joy of Cranleigh
- 7 Crane Spotter

### FEATURE ARTICLE

#### 8 People Profile

Neil Charman, Artist & Musician



- 11 Crane Spotter
- 14 May Crossword
- 14 May Crossword
- 15 Maybe Cranleigh
- 15 May Sudoku

- 16 Dates for Your Diary
- 26 The Man With The Very Long Beard
- 28 Book Review
- 29 May Garden-Top Tips

### SHORT STORY

Colin the Cranleigh Chameleon, is hidden somewhere in the magazine. Can you spot him?



<https://www.facebook.com/CranleighMagazine>  
<https://twitter.com/cranleighmag>

- 30 Girl Guides
- 33 Glebelands School
- 35 Cranleigh Rotary
- 36 Maybe A Meal for Four
- 40 Cranleigh Arts Centre
- 44 Rowleys Centre
- 44 St. John Ambulance



Cover Photo  
Flowers in your beard

## SELF STORAGE CRANLEIGH

We provide secure, clean & dry storage space for businesses & private individuals. **7 days a week access**, CCTV and security gates. Whether you're moving house, setting up a business,



or de-cluttering your home, our friendly team are here to help. Prices start at **£35** a week, please get in touch for more information.

**CALL MARC OR LARA**  
**0800 9177 544**

Email: [paul@cranleighmagazine.co.uk](mailto:paul@cranleighmagazine.co.uk).

© Published by Cranleigh Magazine Ltd. Tel: 01483 275 054

[www.cranleighmagazine.co.uk](http://www.cranleighmagazine.co.uk)





# CRANLEIGH AND DISTRICT



## HAND LAUNDRY.

**High Class Work at Moderate Charges.**

**Collected and Delivered Free of Charge at Customers' convenience.**

*Manageress :*

**MRS. MARGARET EDMONDS.**

*Price List on Application.*

*Advert for the Cranleigh & District Hand Laundry*

**The way we were**

# Joy of Cranleigh

**Joy Horn brings some anecdotes of 100 years ago**

**What was happening in Cranleigh in May 1916?**

**O**n April 22nd, George Edmonds of the Common died at the early age of 44. He had come to Cranleigh fourteen years previously and married Miss Margaret Johnston of New Park. Together they had acquired the Cranleigh Hand Laundry, and had built up a flourishing business on the Common, next to the Cranley Hotel. This provided jobs for over 20 women, besides deliverymen, and must have kept many grateful Cranleigh households in clean sheets. Margaret carried on the business alone for several years.

Empire Day was observed every year on May 24th. The Village School normally held a special service on the open gravel space between the school and the Lady Peak Institute (as in this pre-war picture).

But in 1916 the service was held in the Rectory garden. Soldiers recuperating at the 'Oaklands' military hospital attended it, with members of the staff. After the service, the schoolchildren enjoyed a half-holiday.

The Parish Magazine carried an urgent plea for indoor footwear for the convalescents of 'Oaklands'. Doubtless the village rose to the challenge. A 'Smoking Concert' was held for the wounded soldiers at the Greyhound Inn (where the Post Office now is), organised by the Dennis Dramatic Club. The aim was to provide cigarettes for the soldiers, and £2 was passed to the hospital's commandant.

Two weeks later a further smoking concert was held





*Arthur Sherriff's shop was below the white awning*

there, with 20 wounded soldiers present. This time £2 13s was raised, to provide stamps and stationery.

Arthur H. Sherriff, 32, master baker of Bank Buildings (where Roger Coupe is now), appeared before the Hambledon Tribunal this month, and stated that he had tried to sell his business so that he could enlist, but had been unsuccessful. He asked for time to enable him to dispose of it, and was granted three months. Interestingly, a Chiddingfold farmer, who applied for the exemption of his head carter, was asked if he employed women labour. He replied that he had tried one girl, 'but ... she is running after the soldiers at night, and every dinner-time as well.'

One item of good news resulted from the war. Every spring, the parish council decided how much tax should be levied to pay for the village street lighting, which was by gas. This year, they reported a balance in hand of £96, 'which would probably cover expenses should the war end and lighting be resumed before the end of the coming winter'. Therefore no money needed to be raised! It sounds from this that there was no street lighting at all during the war.

*Cromwell Coffee House-Homemade Food*

## Studio Fitness Classes in Cranleigh

**A range of classes are available including:**

- Step Class (Ellens Green)
- Older Adults
- Pilates Chair
- Core (matwork)
- Personal Training (1 to 1/couples)

Small groups up to max of 4 students to ensure personal attention.

Highly qualified instructors.

Discounts available.

Reasonable prices.

Tailor-made programmes to suit individual needs.

**FREE 45 minute taster session \***

\* Taster sessions are subject to terms and conditions  
For more information please telephone

**07531 399 657**

or email: harrietshaw@hotmail.com





An Empire Day service before the War. Notice the girls' pinafores and hats

In London, the musical review, *The Bing Boys are Here*, opened on April 19th at the Alhambra Theatre, Leicester Square. It included one of the most popular songs of the war. Had this bit of escapism reached Cranleigh yet?

*If you were the only girl in the world  
And I were the only boy,  
Nothing else would matter in the world today -  
We could go on loving in the same old way.  
A garden of Eden just made for two,  
With nothing to mar our joy.  
I would say such wonderful things to you,  
There would be such wonderful things to do,  
If you were the only girl in the world  
And I were the only boy.* ■

**The Cranleigh History Society** meets on the 2nd Thursday of each month at 8.00pm in the Band Room. The next meeting will be on Thursday 12th May, when Michael Edwards will speak on 'Gertrude Jekyll'.

George Robey, Violet Lorraine & Alfred Lester in '*The Bing Boys are Here*'





# Crane Spotter:

## tales from a Cranleigh birder



### MAY -

Swifts will be with us any day.  
Enjoy the show before they go!

**F**ew birds are as aptly named as the Swift. May 5th or 6th usually brings in the screaming bulk of Cranleigh's population. And they will be with us only until the end of July when they depart en masse overnight back to Africa.

They particularly favour nesting under the eaves of the older houses to the north of the fire station. A big thanks to the folks there who make this threatened species welcome!

Swifts are amazing. You can see them almost anywhere around the village as they dive at up to twice the national speed limit - 140 mph. They eat, drink and sleep on the wing. They even mate on the wing and only stop flying, after four years, when they lay eggs and raise young. They can live up to 21 years and cover an estimated three million miles.

They make me feel all poetical:

## The Swifts

Here they come!  
Chasing the days  
With the squeal of summer.

Wheeling, peeling,  
Screaming, gleaming,  
Skimming sky,  
Creaming cloud,  
Swirling, whirling.

Jet black  
Tandem teamwork  
Making a clean sweep  
Through the heavens.



*Swift*

Nifty drifters,  
Scything machines,  
Twisting wing stars,  
Dodging darts.  
Amazing arts!  
Controlled patrol,  
Nip 'n tuck,  
Dip 'n duck.

A circling circus of  
Flashing fliers,  
Dashing criers,  
Swiping skies  
Clean of flies.  
Eavesdropping.  
Lofty expectations.  
Groundless possibilities.

Poised to pounce,  
Enthralling, stalling,  
Fooling and falling.  
Whoosh and slow,  
To and fro,  
Stop and go.

Swooping low,  
Whish - they're above!  
Wish these ones we love,  
Such faithful sojourners,  
Were less rapid returners.  
We crane our necks,  
Now distant specks . . .

It's a swift exit. ■

Twitter - @Crane\_Spotter



See our **FREE BOOK OFFER** on page 22





## A stroke of life

### Neil Charman

#### Artist and Musician

**N**eil has been a Cranleigh resident for the past 20 years and lives with his wife, Kathryn, and one of three sons. Despite having worked as an advanced practitioner in radiography at the RSCH in Guildford for many years, he has always had a creative streak, and loved drawing and painting too. Neil divided his time between radiography, painting, and playing in the local band he belonged to.

In 2009, however, he sadly suffered a major stroke which left him with right sided paralysis, aphasia, loss of speech, and dyspraxia.

When the stroke happened, his wife was at work and Neil was at home, sick, with a chest infection. His constant bouts of violent coughing damaged an artery in his neck, which in turn, caused the stroke. Neil managed to get out of bed before he collapsed.

When Kathryn got home, and found him lying on the floor, she thought he was dead.

The stroke left Neil unable to read and write. He spent months in a rehabilitation unit in Haslemere hospital, just to be able to stand

*Above  
Neil before his stroke*



*Blackberries in pen and ink*



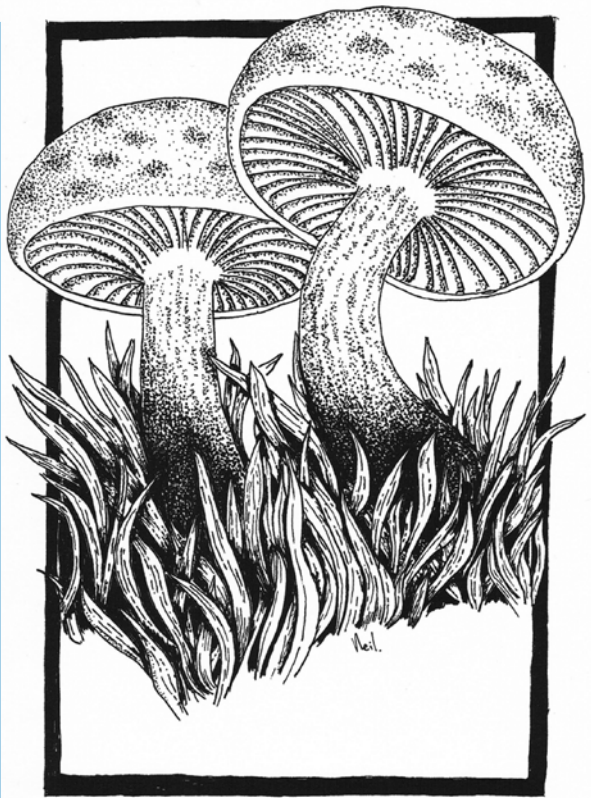


and walk a few steps. Kathryn recalls how frustrated his inability made him, "I'd never seen Neil cry" she reminisces, "As he struggled to sit up in bed, you could see from the look on his face that the implications of his stroke had hit him."

After 7 months had passed, Neil was allowed home, enabled through the help of local Cranleigh Lions who built him a ramp, and kindly bought him a laptop to continue his visual therapy.

Friends also quickly came to the rescue, installing a path to the front door. After some time, Neil began to doodle again, and about 2-3 years after the initial stroke, began to properly draw again.

With the help of another charity of retired engineers, and the equipment they provided for him, Neil was able to make progress by starting to remake glass beads, one-handed. Slowly, he started playing his guitar and harmonica again, with the encouragement of his musical friends. One friend in particular made a specially adapted slide guitar for him to play.

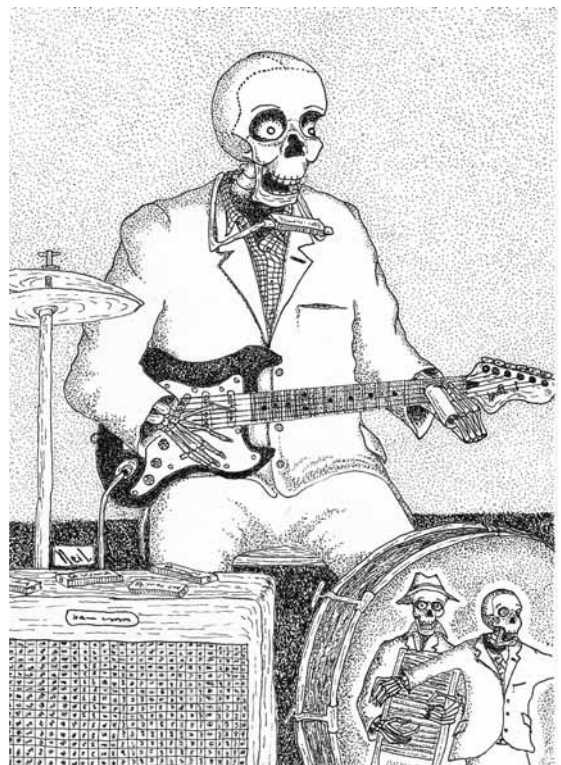


*An idea for a greetings card*



*Neil and Kathryn before his stroke*

Neil has also attended speech therapy, initially with a local talk group, but then later at Dyscover in Walton on the Hill, which he attended once a week. This amazing charity helps younger people with speech therapy, following strokes. Enabling them to reengage with society and build up their confidence in their interaction with the outside world. Neil's biggest frustration is his inability to express himself.



*Neil loves playing music and has a radiographer's perspective on the human body – he combines both in his humorous illustrations!*

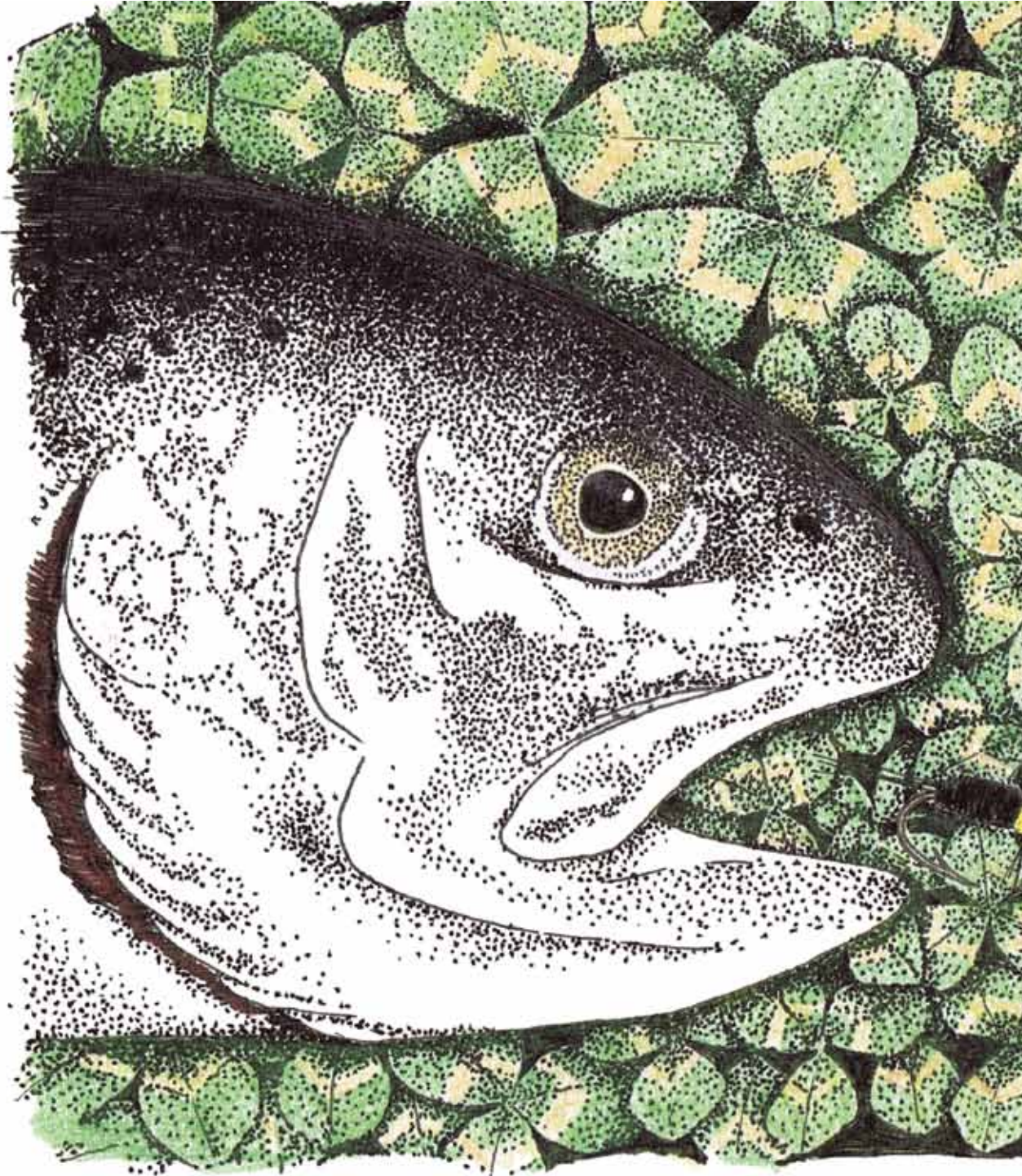


It can take hours to work out what he is trying to say, but Kathryn doesn't give up.

She feels that this tragedy has brought them closer together as a couple, and they see themselves as a "stroke couple".

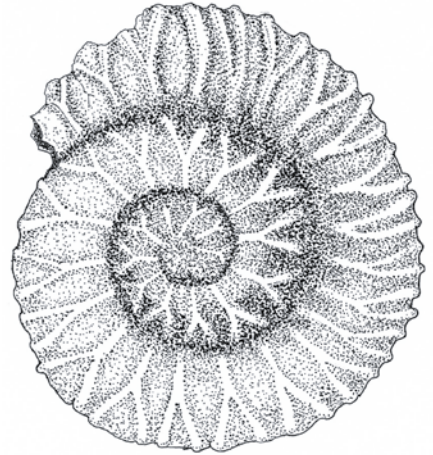
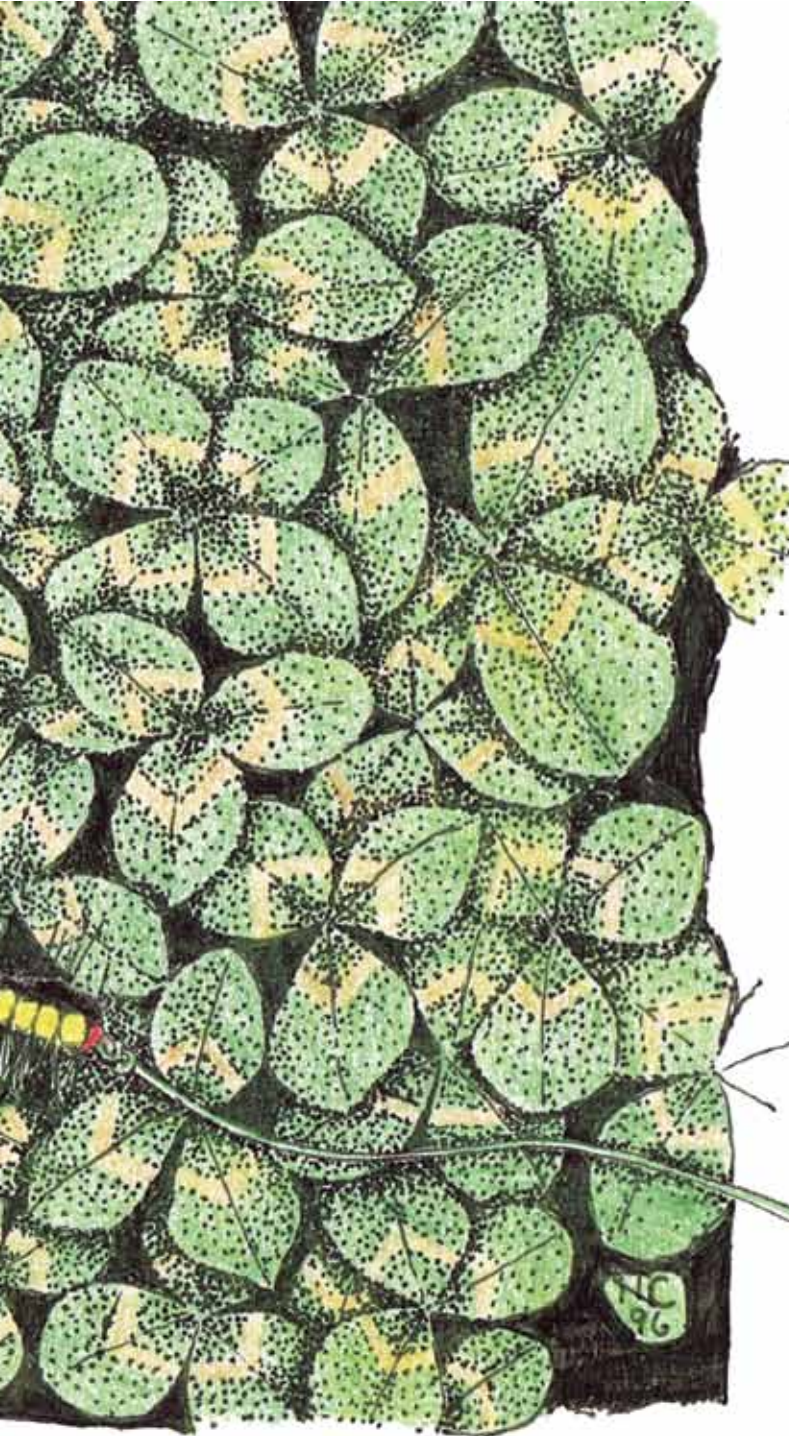
They are now spending much more time with each other as Kathryn cares for him.

Years later, Neil was able to talk about his out of body experience, dying on the bedroom floor that day. He spoke about entering a





Below  
Neil loved to fish and has a keen interest in fishing



Fossil study

Neil



Crocuses

Neil



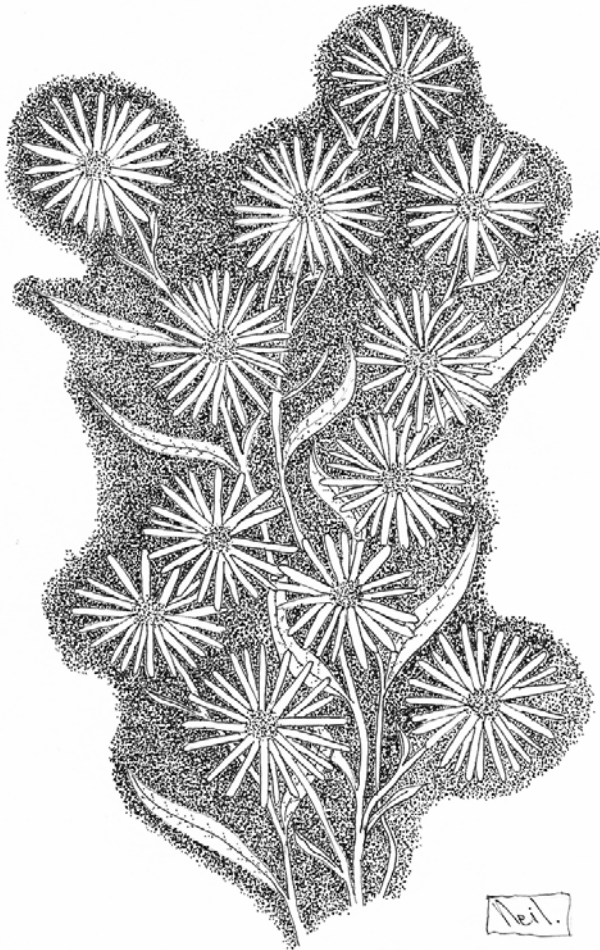
Mouse study



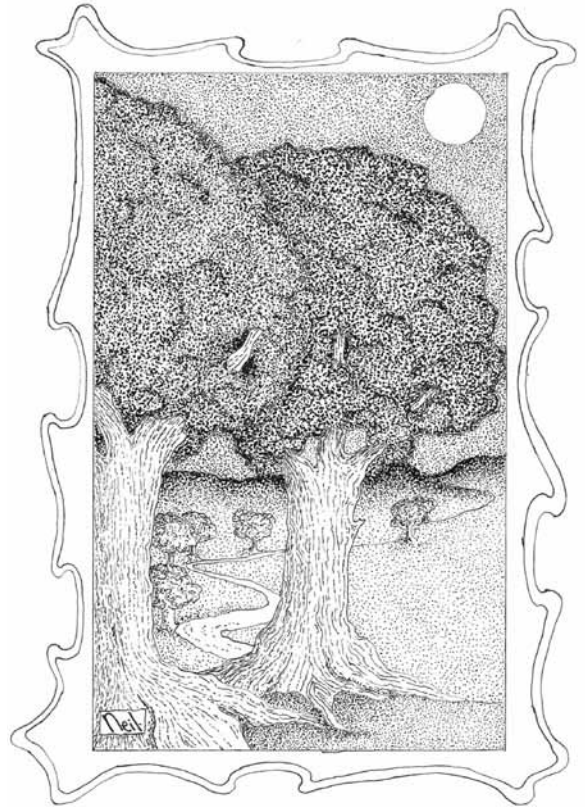
warm and peaceful place that felt more real than the bedroom he'd left behind. His experience has reaffirmed their faith and neither of them fear death as a result.

With the help of so many wonderful people and charities, Neil now enjoys a full and well-rounded life, and is an inspiration to those around him. His wish is to inspire others in a similar situation to never give up and look for what you can achieve, rather than focusing on what you are no longer able to do. After years of post-stroke stickmen, Neil is now able to create beautiful pieces of art.

Neil plans to sell his remarkable artwork in the form of greetings cards and pictures, in order to repay the people and charities that helped him.



*A flower study for a greetings card*



*A tree study for a greetings card*



*A drawing of Neil's band, a group of middle aged men, who called themselves 'Waistband' because of their expanding waistlines!*

**“Thank you people of Cranleigh for all your help and support.”**

For more information about Neil's journey and his artwork contact: [neilcharman@aol.com](mailto:neilcharman@aol.com) or telephone 01483 273134. ■

# lynn murray & co

Where **experience** makes the difference!

Locally based solicitors who solve your legal problems in a friendly and approachable manner whether you are an individual, a business or a non-commercial organisation.

Experts in property, wills, probate and lasting powers of attorney.

t: 01483 26 88 47

f: 01483 27 39 34

e: [lynn@lynnmurray.co.uk](mailto:lynn@lynnmurray.co.uk)



[www.lynnmurray.co.uk](http://www.lynnmurray.co.uk)

The Old Bakery, Collins Court, 39 High Street, Cranleigh GU6 8AS



**Tyres & Servicing**

## Friendly & Reliable

Chat to our staff about your next car service.

### WE ARE ALWAYS HAPPY TO HELP!

Why not book your car into our workshop for it's next service and try us out. We have many satisfied customers who return year after year because they can trust our services. Just give us a call and see for yourself.

### Servicing, \*M.O.T.'s. Exhausts & Batteries

\*All M.O.T.'s can be arranged as part of your usual car service.

**t: 01483 277794**



**FREE**  
quotes!  
Competitive  
rates!  
Local collection  
and delivery  
service!



Chris



Simon



Paul



e: [sales@elescranleigh.co.uk](mailto:sales@elescranleigh.co.uk) [www.elescranleigh.co.uk](http://www.elescranleigh.co.uk)

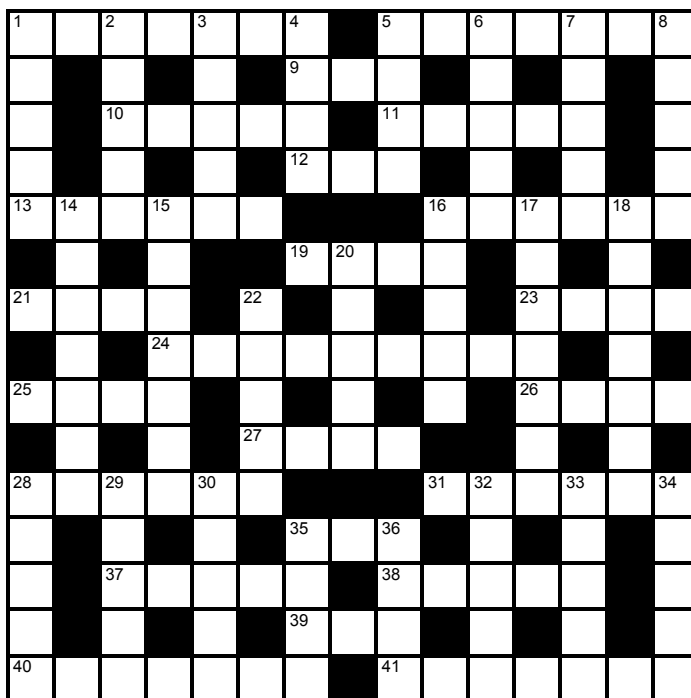
15 Manfield Park, Guildford Road, Cranleigh, Surrey GU6 8PT



A percentage of Ele's profits support the David Shepherd Wildlife Foundation



## May Crossword Puzzle



### Across

1. Sarcastic (7)
5. Appears (7)
9. Lower limb (3)
10. Middle Eastern bread (5)
11. Zest (5)
12. Used to be (3)
13. Parchment roll (6)
16. Lecture (6)
19. Egg-shaped (4)
21. Finely powdered earth (4)
23. Resist openly (4)
24. Clogged (9)
25. Capital of Peru (4)
26. South American Indian (4)
27. Skin eruption (4)
28. Put in (6)
31. Desert in N Africa (6)
35. Implore (3)
37. Hold responsible (5)
38. Cinder (5)
39. Direct a gun (3)
40. Protective helmet (4,3)
41. Person that settles (7)

### Down

1. Weeps (5)
2. Higher (5)
3. Sum (5)
4. Sharp nail as on a cat (4)
5. Ova (4)
6. Result (5)
7. Dimness (5)
8. Native of Saxony (5)
14. Care (7)
15. Cake made of oatmeal (7)
16. Narrow openings (5)
17. Tinged with red (7)
18. Constable (7)
20. Scenes (5)
22. Nasal grunt (5)
28. Inhabitants of Ireland (5)
29. Not drunk (5)
30. Arrive at (5)
32. Superior of a monastery (5)
33. Fourth month (5)
34. Later (5)
35. Strike forcefully (4)
36. Precious stones (4)



Colin the Cranleigh Chameleon, was hidden on page 8 of the April magazine. Did you spot him?

Crossword and Sudoku – answers will appear in the next issue.

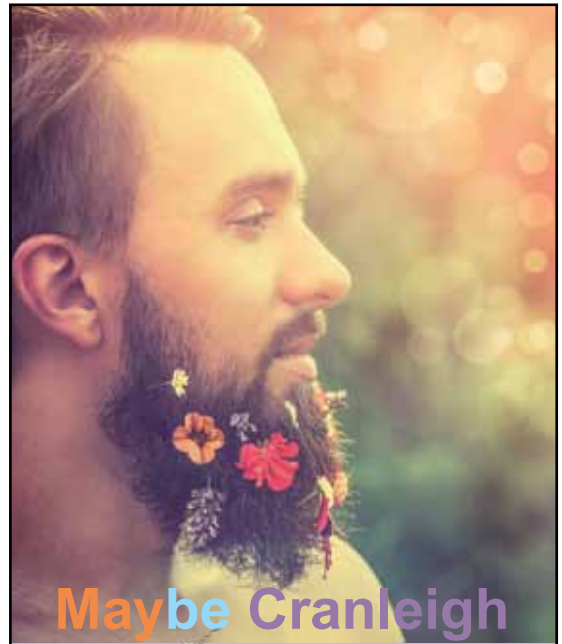


## May Sudoku Puzzle 1 - Easy

			7					1
7	8	6			1		3	
		1		9		6		
6	3	9	2					5
5					3	1	4	6
		7		3		5		
	1		6			2	9	4
4					9			

## May Sudoku Puzzle 2 - Hard

	3		1					
7	9	2				4		
	5			8	7	6		2
					8			
4	1		2		6		5	3
			5					
5		9	3	2			6	
		6				2	8	9
					9		4	



## Maybe Cranleigh

**Maybe** you are considering moving to Cranleigh? Working in Cranleigh? Or perhaps you were born in Cranleigh and have lived here your whole life. Either way, discover or celebrate Cranleigh this issue with us.

Did you know? The month of May takes its name from the Roman goddess Maia, goddess of fertility. In Cranleigh this May the village is full of new life as trees and flowers burst into bloom. Explore the fertile fruitful life of Cranleigh and the surrounding areas with our gardening tips, our monthly story, and our inspiring 'People Profile' article about a new lease of life. ■



1	M	A	C	H	I	N	E	S	T	I	T	C	H			
2	N	D	O						H		A	T				
3	A	I	M	L	E	S	S		S	A	R	D	I	N	E	
4	T	H	R	O	N	E		C		R				R	I	N
5	E	A			N	S		S		E				E		
6	R	E	L	A	T	I	V	E	S		R	A	D	A	R	
7	W	T	C								B	R	N			
8	S	E	N	O	R											
9	I	N	C	O	G	N	I	T	O							
10	U		M		M	E				N				N	T	
11	P	E	R	S	U	A	D	E		S	E	X	T	E	T	
12	P	A	N	D	A	E	A									
13	E	A	R	D	R	U	M									
14	A	I	R	C	R	E	W									
15	P	R	O	J	E	C	T	I	O	N	I	S	T			

April Crossword Solution

2	9	3	5	6	4	1	7	8
6	7	1	2	3	8	4	5	9
8	4	5	7	1	9	2	6	3
4	3	2	1	7	6	8	9	5
9	1	6	8	5	3	7	2	4
7	5	8	9	4	2	6	3	1
5	6	7	4	9	1	3	8	2
1	8	9	3	2	7	5	4	6
3	2	4	6	8	5	9	1	7

April Sudoku Easy Solution

7	2	3	8	4	5	9	1	6
8	4	1	6	3	9	2	5	7
5	6	9	2	1	7	3	4	8
6	1	5	3	7	2	4	8	9
4	9	7	1	6	8	5	2	3
3	8	2	5	9	4	6	7	1
9	5	4	7	8	3	1	6	2
2	7	6	9	5	1	8	3	4
1	3	8	4	2	6	7	9	5

April Sudoku Hard Solution



# D**Days** Dates for your Diary



## Cranleigh Country Market

**Friday 6, 13, 20 & 27 May,**

Cranleigh Country Market will be held in The Bandroom, Village Way, Cranleigh, 9.15 – 10.30 am, offering a wide selection of home-made baked items and preserves, hand-made crafts and home-grown produce direct from the producer. Stuck for a gift? Why not send a market hamper of your selection of goodies; country-wide service or make a selection from our range of hand-made jewellery made from semi-precious stones and glass. Boxed sets available.

## HEALTH & LEISURE WALKS

All welcome to guided, free, sociable, HDC walks led by trained volunteers; no need to book, just turn-up at the start point. A booklet containing over 250 walks is available from the Walks Co-ordinator on 07720 714306 or online at [www.horshamhealthwalks.co.uk](http://www.horshamhealthwalks.co.uk) Beginners are recommended to contact the Walk Leader to discuss suitability. All walks can be wet and muddy in places. Forthcoming walks in the Cranleigh magazine distribution area and neighbouring areas are as follows:-

**Tue 3 May 6:30pm: Mucky Duck Inn, Tismans Common, Rudgwick.** A 4½ mile figure-of-eight walk, some stiles and inclines, through woods to Baynards. Meet in the pub car park (A 281 Horsham to Guildford road, turn left just before The Fox at Bucks Green towards Loxwood, pub is about one mile on right, (RH12 3BW TQ067323) NO DOGS on walk. 2½ hours. **Leaders: Jane tel: 01403 261672 or Pauline tel: 01403 240419**

**Wed 4 & 18 May 10:00am: Rudgwick Brickworks (2)** Meet in the "The Milk Churn", Rudgwick Brickworks, Lynwick Street, RH12 3DH. From Horsham, take the A281, turn right at the Fox Inn, into Lynwick Street, then one mile on left, just over the bridge. A 4/5 mile walk, taking 2 hours, taking in the Downs Link and surrounding countryside. Can be muddy in places. **Leader: Keith tel: 01403 823436**

**Sun 8 May 10:00am: Loxwood (4) Through Allfold. Two County Walk** This is a circular fairly flat, open landscape 5¾ mile walk taking 2¾ hours, with lovely views of farmland, fields woods and lakes. We will be walking through fields with horses, sheep and cattle, ending along the towpath on the other side of the road from Loxwood walks 1 and 2, finishing near to a local pub. We have one or two challenging stiles on route, good teamwork needed and a sense of humour. Can be muddy at times please wear reasonable footwear and bring some water to drink along the way. Parking in the Loxwood Doctors Surgery (RH14 0SU) by kind permission, for the duration of the walk. Find us in Farm Close off Station Road. Sorry, NO DOGS. **Leaders: Pete, Sharon & Rich tel: 01403 784042**

**Mon 9 May 10:00am: Kingsfold.** A 5 mile circular walk, mostly flat but one short steep hill and some stiles, through fields and woodland which should display an assortment of flowers in Springtime. Good views in all directions. Park at the Owl Public House, Kingsfold (TQ168364, RH12 3SA). Good beer and food available. NO DOGS. 2¼ hours. **Leader: Mike tel: 01403 242564**

**Wed 11 May 7:00pm: Loxwood (7)** A gentle 3 mile walk through woodland, fairly flat may be livestock on the way, taking 1¼ hours. Can be muddy at times please wear reasonable footwear and bring some water to drink along the way. Sorry, NO DOGS. Parking in the Loxwood Doctors Surgery, Farm Close (off Station Road), RH14 0SU, by kind permission, for the duration of the walk. (Do not arrive before 6:45pm) Please bring a torch. **Leaders: Pete, Sharon & Rich tel: 01403 784042**

**Thu 12 May 10:00am: The Kings Head, Rudgwick to Baynards.** Meet in the car park opposite the pub (TQ 091343, RH12 3EB, North off the A281 along the B2128 for about one mile towards Cranleigh). A mostly flat, (some stiles and short steep slopes) circular walk along the Sussex Border Path, providing panoramic views of both the North and South Downs, then along the old railway line and over farmland to Baynards Railway Station and back to the pub. 6 miles, 3 hours. NO DOGS. **Leader: Geoff tel: 01403 258180**

**Tue 17 May 10:00am: Leith Hill Meet at the Starveall Corner Car park (free parking) on the Leith Hill to Abinger Common road (TQ131432).** A 5 mile circular walk, taking 2½ hours, along woodland tracks, through open fields and heathland. No stiles but several hills with loose stones and roots underfoot. Stunning views from several vantage points including Leith Hill Tower where (if available) we stop for refreshments near the end of the walk. **Leader: Lynne tel: 01403 268157**

**Sun 22 May 10:00am: Billingshurst Loves Bridge.**

A lovely 6 mile walk taking 2¾ hours, through fields, along lanes and along the river in the countryside around Sorry, no dogs. Free parking in the Billingshurst Library car park (off the High Street down the side of the Post Office (RH14 9JZ) **Leaders: Pete, Sharon & Rich tel: 01403 784042**

**Mon 23 May 10:00am: Wisborough Green** Meet in the car park at the Village Hall in Wisborough Green (TQ051258) for a 7 mile flat circular walk with numerous stiles through woods and across farmland on footpaths and bridleways and alongside the River Arun/Canal, passing Lording's Lock, with views of the South Downs taking 2¾ hours. NO DOGS please as we may encounter livestock. **Leader: Mike tel: 01403 242564**

**Wed 25 May 7:00pm: Loxwood (3)** A 4 mile walk, taking 1¾ hours, through local woodland some lanes and along part of the Arun Canal, ending near a local pub. No stiles, fairly flat. Sorry no dogs Can be muddy at times please wear reasonable footwear and bring some water to drink along the way. Park at Loxwood Surgery car park (off Station Road), by kind permission for the duration of the walk only. RH14 0SU (TQ041314). **Leaders: Pete, Sharon and Rich tel: 01403 784042**

**ST NICOLAS CHURCH – Concerts**

Surrey Hills Chamber Choir on Saturday 28 May at 7.30pm in St Nicolas Church Cranleigh. Tickets cost £10 for adults, including refreshments during the interval. Tickets available - in advance from the Parish Office, Church Lane Cranleigh GU6 8AR

**Tel: 01483 273620 – or on the door.**

Surrey Hills Chamber Choir is a mixed voice choir of around 30 voices, they were founded in September 2015. The choir has grown into a group of enthusiastic, friendly and talented singers who were named adult Choir of the year 2012. If you require any further information [www.stnicolascranleigh.org.uk](http://www.stnicolascranleigh.org.uk)

**ALFOLD CHAPEL**

**Saturday May 14**

**10:30 till 13:00**

Alfold Chapel, Alfold, invite you to their 'Spring Sale'

Free entry, come and browse our stalls.

Sale of Plants, New clothes, Bric-a brac etc.

**Refreshments available.**

**EWHURST PLAYERS****Present a Comedy Double Bill & Fish 'n' Chip Supper Evening**

**18 - 21 May 2016 - 7.00pm. Please arrive promptly.** An evening of comedy and food as the Ewhurst players offer you 2 for the price of one!!  
*See our advert on page 43.*

**EWHURST SECRET GARDENS 21**

**and 22 May, 2pm - 6pm.** The gardens are full of interest, both large and small, with fabulous views, delicious teas and interesting plants for sale. The first tour took place in 1995 and since then nearly 100 gardens have been open to visitors, raising in excess of £55,000 for village charities. Come and enjoy our hidden corners in Ewhurst and receive a friendly welcome from the garden owners who will be pleased to show off their hard work! Tickets can



be purchased on the day at any of the gardens at **£6.50 (£5.50 OAPs and children under 14 free) or 50p off** if purchased in advance from Hazelbank Stores, Ewhurst. **Sorrel Sadeghzadeh 01483 277264**

**FLOWER ARRANGEMENT CLUB**

**Thursday 26 May**

St. Catherine's Flower Arrangement club meet at Shalford Village Hall (by the pond) at 1.00 pm doors open for 1.45 pm start. Mrs. Hazel McGregor is demonstrating 'Floral Fusion'. All arrangements to be raffled. The club competition is 'Fleuramour'. Do come and enjoy an afternoon with tea and biscuit. Everybody welcome. **For more information telephone: 01483 578368**

**SUMMER FUN****at the Ewhurst Carnival**

**Saturday 16 July from 12:00** at the cricket green.

*See our advert on page 40.*





**HANDYMAN'S HARDWARE**  
DECORATING • JOININGERY • ELECTRICAL • HOMEWARE • GARDENING • TOOLS • KEY CUTTING



**‘Our staff are  
always ready to  
serve  
with a smile’**

**Over 15,000 listed products inside and out!  
PLUS find out about our £10 cash back DULUX  
voucher.**

**Your local friendly  
Shopkeeper!**

**HANDYMAN'S HARDWARE**

This issue we remember the master of DIY sales, who sadly passed away last month. Ronnie Corbett could sell ‘Fork Handles’ to anyone and everyone! Pop in to our shop and be assured of the same warm greeting from our friendly staff.

**01483 272916**

**28 High St. Cranleigh GU6 8AE**



**10%**  
OFF YOUR INVOICE  
ON PRESENTATION OF  
THIS ADVERT

**MOST COMPETITIVE RATES IN THE CRANLEIGH AREA  
PLUS 10% OFF**

**FREE COLLECTION AND DELIVERY**  
**SERVICING**  
**MOTS\***  
**REPAIRS**  
**DIAGNOSTICS**  
**TYRES**  
**EXHAUSTS**  
**BATTERIES**  
**BRAKES**  
**WELDING**  
**RECOVERY**

\*ALL MOTS CAN BE ARRANGED AT YOUR CONVENIENCE

**FREE**  
COURTESY CAR  
AVAILABLE

**FREE VEHICLE CHECK**

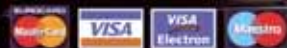
MAKE SURE YOUR CAR IS  
SUITABLE AND SAFE TO DRIVE

**ALL MAKES AND MODELS**

**T: 01483 271 421**

**M: 07775 277 277**

ALL MAJOR CREDIT CARDS ACCEPTED INC.



UNIT 5 - CRANLEIGH WORKS - THE COMMON - SURREY - GU6 8RZ  
(BEHIND THE CRANLEY HOTEL)

**WWW.KDBAUTOS.COM**

email: [KEITH@KDBAUTOS.COM](mailto:KEITH@KDBAUTOS.COM)



# THE BENEFITS OF K-LASER THERAPY FOR YOUR PET



**K**-Laser therapy is a relatively new treatment to the UK veterinary and human clinics but has been used successfully in the USA for several years. There is now gathering clinical evidence to show that this new low level laser light therapy has the ability to reduce pain, inflammation and accelerate healing across a wide range of clinical presentations.

Laser energy provided by the K-Laser increases your pet's circulation, drawing blood & nutrients to the area, where the laser then stimulates the release of oxygen to the damaged tissues, creating an optimal healing environment. The laser also increases energy at the cellular level and reduces pain and inflammation by a direct effect on the nerves.



Brookmead Veterinary Surgery are one of the very few vets in Surrey to offer this treatment and they continue to receive very positive responses from their clients.

*They said "We held an initial trial with the K-laser at our surgery and the client feedback was so positive that we decided to go ahead and purchase one so that we could continue to offer this service. It is proving to be a huge success with our clients, especially for helping to treat arthritis and speeding up healing after surgery."*

You can find more information about K-Laser therapy at  
[www.myklaserpet.com](http://www.myklaserpet.com) or call Brookmead Veterinary Surgery

## 01483 274242



**BROOKMEAD**  
VETERINARY SURGERY

**Monday 6th June 2016 at Cranleigh Baptist Church starting at 7.30pm**

Brookmead Veterinary Surgery are holding an evening workshop and presentation on 'Benefits of K-Laser therapy for your Pet' where there will be a demonstration and a chance to book therapy at a special offer price.

The evening is **FREE** for anyone interested, with a complimentary glass of wine on entry.

*Early booking of this unique event is recommended to avoid disappointment.*

To book please Phone: 01483 274242 or Email: [info@brookmeadvets.com](mailto:info@brookmeadvets.com)





# TAILOR-MADE INTERIORS

TAILOR~MADE

*Interiors*



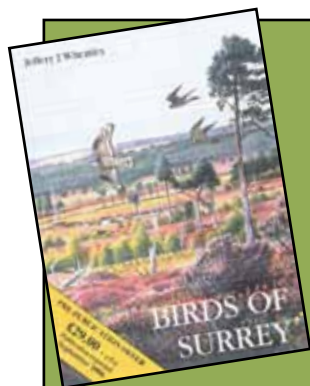
Come and see us carefully handmake our furnishings in our traditional curtain making studio at Smithbrook Kilns. Interior Design service available and introductions to many other local skilled trades.

01483 277474

[christina@tailor-madefhome.co.uk](mailto:christina@tailor-madefhome.co.uk)

**[www.tailor-madefhome.co.uk](http://www.tailor-madefhome.co.uk)**  
82b Smithbrook Kilns, Cranleigh, Surrey GU6 8JJ





## Special Cranleigh Magazine offer for Crane Spotter readers

Want to know more about birds in Surrey? Why not join Surrey Bird Club? Subscriptions are only £15 a year and this brings you a quarterly magazine, an annual bird report, organised field meetings and lectures.

But I've negotiated an absolutely cracking deal! Sign up with a direct debit at [www.surreybird-club.org.uk](http://www.surreybird-club.org.uk) and you will be given a copy of the 700 page ground-breaking book *Birds Of Surrey*, by Jeffrey J. Wheatley, **TOTALLY FREE**. Its cover price is £35. 'Nuff said. And no, this isn't an April fool joke.

Published in 2007, it includes records from an army of keen birders, including myself, a systematic list and species accounts, breeding distribution maps, analysis of breeding surveys, population estimates, charts and histograms, ground and aerial photographs, plus vignettes, paintings and line drawings.

There are also background chapters on climate, history, geology, personalities, other societies and habitats and the effects of human intervention.

*The offer applies while stocks last only*

# OXBOROUGH



Chartered Surveyors

- Valuations & Surveys
- Property & Estate Management
- Compulsory Purchase & Compensation
- Landlord & Tenant
- Sales & Acquisitions
- Planning & Architectural Services

01483 276688

[office@oxboroughsurveyors.co.uk](mailto:office@oxboroughsurveyors.co.uk)

*Land & Rural Property Specialists*

Collins Court, 39 High Street, Cranleigh  
Surrey, GU6 8AS  
[www.oxboroughsurveyors.co.uk](http://www.oxboroughsurveyors.co.uk)



## T.C. Trinder

ALL TYPES OF FENCING  
Cranleigh  
t: **01483 276 326**

Tree Surgery and Felling



## PARK LAUNDRY

**Ironing and Laundry Services**

From Shirts to Sheets  
Iron only or wash and iron. Weekly, fortnightly, one offs or on demand welcome.

e: [parklaundry@btinternet.com](mailto:parklaundry@btinternet.com) t: **07766 411 350**

*Cromwell Coffee House-Homemade Food*

UNIT 1, OLD COMMON WORKS, CRANLEIGH, GU6 8RZ



20%  
OFF YOUR FIRST WASH!

T: 07863 477 137

(INSIDE & OUTSIDE)

Hand wash  
Hoover  
Plastics cleaned  
Dashboard  
Windows in & out  
Door shuts  
Tyres dressed  
Free air freshener

Car £12.00  
4x4 / 7-seaters £15.00

£5  
CAR WASH FROM

WWW.CRYSTALCARWASH.CO.UK



# AGW

EST. 1961  
Roofing & Construction Ltd.

## ROOFING

- Tiling ● Slating
- Guttering ● Chimneys
- All Lead Works
- High Performance Flat Roofing



## CONSTRUCTION

- New Houses ● Alterations
- Extensions ● Maintenance
- Planning / Drawings
- Project Management



Proud members of  
**Checkatrade.com**  
Where reputation matters  
Quality - Professionalism -  
Craftsmanship - Efficiency - Cleanliness



SERVING THE LOCAL COMMUNITY FOR THE LAST 35 YEARS

Call us today on : 01483 275592

Email: [info@agwroofing.com](mailto:info@agwroofing.com) Web: [www.agwroofing.com](http://www.agwroofing.com)

Barn End, Rowly Drive, Cranleigh, Surrey GU6 8PN

## DID YOU KNOW? CRANLEIGH MAGAZINE IS ONLINE TOO...



OUR WEBSITE FEATURES  
EVERYTHING YOU LOVE ABOUT  
THE MAGAZINE, AND MORE!

[WWW.CRANLEIGHMAGAZINE.CO.UK](http://WWW.CRANLEIGHMAGAZINE.CO.UK)



/CRANLEIGHMAGAZINE



@CRANLEIGHMAG



+/CRANLEIGHMAGAZINEUK

## CentriSTORE

### Personal Storage

Centristore offer a comprehensive range of personal storage options including furniture boxes, container storage and warehouse space.



### Business Storage

Centristore offer a range of storage options to business customers from self-storage units & warehouse space to palletized & racking alternatives.



### Offices to Rent

Centristore offers small affordable office spaces to rent. Spaces are available for immediate occupation.



**T: 01483 272000**

**E: [sales@centristore.co.uk](mailto:sales@centristore.co.uk)**

Mead House, Littlemead Industrial Estate, Alfold Road,  
Cranleigh GU6 8ND, United Kingdom



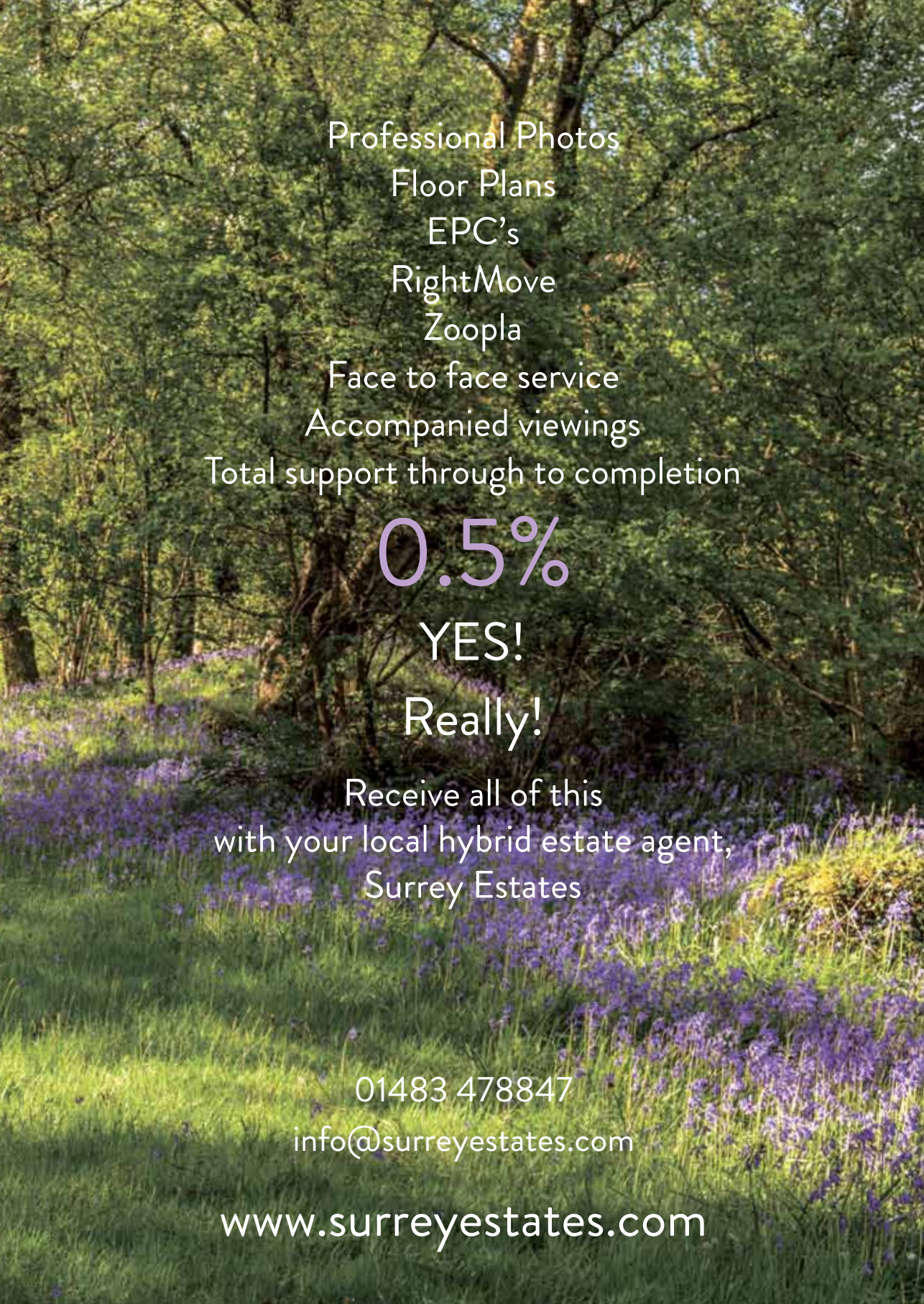




SURREYSTATES

Trusted, Reliable, Local.





Professional Photos  
Floor Plans  
EPC's  
RightMove  
Zoopla  
Face to face service  
Accompanied viewings  
Total support through to completion

0.5%

YES!

Really!

Receive all of this  
with your local hybrid estate agent,  
Surrey Estates

01483 478847

[info@surreyestates.com](mailto:info@surreyestates.com)

[www.surreyestates.com](http://www.surreyestates.com)



## SHORT STORY

# The Man

## With The Very Long Beard



Jasper stood rigidly, his wizened neck hiding beneath his balding head. His cagey eyes shone clear blue in the harsh summer sun as he glared at the children dancing around the Maypole with youthful glee, ribbons twirling and spinning with delight.

Jasper shifted from one foot to another before giving into the pleas of his aging limbs and lowering himself to a nearby bench, collapsing with an almighty groan that scared away the pigeons hovering nearby.

As he reached out to steady himself, his crooked fingertips found a discarded daisy chain, draped over the back of the bench. Jasper examined the flowers with narrowed eyes, their little yellow faces grinning up at him. He crushed the gleeful petals in his withered hand with cold enjoyment. He'd take no pleasure from a fanciful accessory left behind by its creator, no pleasure at all and he made certain no one else would either.

Suddenly the wind around him picked up restlessly and the Maypole, which had been abandoned by the children, began to spin at a frantic pace.

It was as though it was being twirled by a giant's unseen hand, turning it like a child's spinning top. Jasper's mouth went dry as he watched the crazed Maypole, its coloured

ribbons lashing the air like a 'Cat O' Nine Tails'. Several gaudy streamers flew out and wrapped themselves tightly around his thin frame.

The wind roared in his ears and suddenly everything went black.

Jasper awoke with a start, lifting his head abruptly and smacking the headboard with a crack. For several minutes all he could see were dots before his eyes until he caught sight of the reality of his sparse bedroom, clearly visible from beneath his bed covers.

He gradually took in his surroundings before mustering all his strength to sit up. Jasper stopped. His gaze fixed on the mirror opposite the rickety old bed. He was shocked by the reflection gazing back at him.

There was the familiar face, riddled with deep lines and wrinkles that told the story of years of pain, loneliness and despair. Some deserved, some just life's cruel blows. He saw his brows sagging over deep sullen eyes, and his thin, unforgiving mouth.

But what was this? In place of his day-old stubble, now grew a tremendous beard. It was pure white, coarse and vulgar, and certainly not his.





Upset by his discovery, Jasper heaved himself off the bed and staggered across the room. His unsteady legs carried him over the floorboards as he scrambled round the corner and into the bathroom. He noticed bruises already appearing on his bony hip after he collided with the door behind him. Jasper lurched forward and grasped the sink. He raised his head to look in the mirror and fumbled for the scissors on the shelf. Finding them through gritted teeth, he began to shear it off. He wanted it gone and then he would take the time to work out from where it had appeared and why.

After a frantic few minutes, Jasper was satisfied with his work. Wild eyes looked again at his reflection. He was pleased by the smooth jaw and sallow skin now visible to his discerning gaze.

His bearded image now gone, he couldn't find the strength to decipher what had just happened. So he seized his trench coat, throwing it onto his hunched shoulders and headed out the front door, intending to forget the whole debacle.

Jasper enjoyed the brisk walk, though his aches and pains reminded him of his age with every step he took. But it wasn't long before he began to notice a strange weight that slowed him down. Jasper took another uncertain step forward and abruptly tripped, landing headfirst, in a nearby flowerbed.

Jasper coughed and peonies tumbled from his mouth. His hostile eyes looked around in search of the perpetrator, cursing them under his breath. He caught sight of a flash of white, and blindly he grabbed hold, only to let go a moment later with a confused cry of pain. All around him lay snow white tresses, entwined with flowers and soil. The beard was back. Five...no... twelve times as long!

Jasper climbed to his feet in agony, turned around several times, feeling the distasteful thing with dismay as it swayed in the breeze. He bent down and gathered it up in his arms before hastily heading back towards home to locate his scissors once more.

It was ten minutes before Jasper felt the tiny tug on the ever-growing beard. He cautiously turned to see a small girl with eyes wide, examining his beard, captivated by the length she held in her little fist.

"Get off!" Jasper scowled, glaring at the child who was touching him with her sticky fingers. The little girl was startled and looked up, but would not relinquish his beard.

"Is it magic?" she enquired, her delicate brows furrowed in thought as she plucked a daisy out from the tangled hair.

Jasper stared. He'd never known a child to be so brazen once he'd scowled his unfriendly scowl and yelled and scolded them!

"Leave me alone," Jasper griped, briskly snatching the hair from her grasp.

He stomped away, resuming his journey homeward. But the sound of crying stopped him in his tracks. The little girl had thrown herself to the floor and was howling in distress. He traipsed back to where she lay, and peered

at her unsympathetically, eyes squinting at her dejected form.

"This is ridiculous and you are wasting my time," Jasper remarked.

The little girl sat up without warning, her eyes glinting with tears.

"I can't find my way home," she said in a whisper.

Dumbfounded Jasper stared at her in horror. What a day it was turning out to be. Who was this infant? Where was her mother? Why were they here together and why had her fears now become his concern? Was it really his duty to help this small child?

Gradually her sweet demeanour overshadowed the plight of his wearisome beard which paled into insignificance. Swayed by the sight of her trembling lip, his stubborn heart melted and he reached out a hand to help her up. Eyes bright, the girl took his hand and with a smile, gradually got to her feet.

As they made their way Jasper began to gently prise his rough hand from hers, only to find her little grip tightened. They were partners now, at least while they walked and until he brought her to the safety of her home. The strangeness of his beard had intrigued her and despite his harsh rebuffs, she had trusted a bearded stranger for help. Her need had diminished his.

Resigned but strangely heartened, Jasper headed off down the road, hand in hand with the little girl. Moments later he realized that the beard was beginning to shrink. Maybe he was beginning to be kind, again, enjoy life and love people once more. ■

## Get Ready For . . .



**Start:** Cranleigh Common  
**Finish:** Cranleigh Baptist Church  
**Free and open to all aged 4 – 11**  
 (must be 4 by Sunday 7th August)

For more information contact **Andy Turnbull**  
 on **01483 275371** or **07984679407**  
 Email: [andy@cranleigh.org.uk](mailto:andy@cranleigh.org.uk)

*Cromwell Coffee House-Homemade Food*

# BOOK REVIEW

## Rebecca

by  
Daphne Du Maurier

The book "Rebecca" by Daphne Du Maurier, draws on the alluring glamour of 1930s country society and the aura of impending devastation that saturated the years before the Second World War. Put simply, it is a novel about a house and a dead woman.

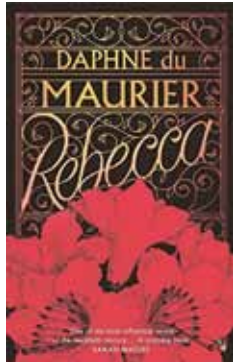
The book tells the story of a young, nameless protagonist whom finds herself sucked into a whirlwind romance with her volatile new husband, the illustrious yet gloomy Maxim de Winter, owner of the sprawling Cornish estate, Manderley.

Lured to his manor with a blunt marriage proposal, and a hurried honeymoon, the narrator finds there is already a lady of the house occupying her new home, Rebecca, Maxim's acclaimed (dead) ex-wife. The protagonist finds herself haunted by Rebecca's imposing ghostly presence, her mark left on everything within the house, including Manderley itself, seeming to come alive with Rebecca's malevolent spirit.

Loved and admired by all who met her, Rebecca's tragic death hounds the young narrator wherever she goes, as she tries to make her own legacy, enshrouded in Rebecca's shadow. As the story unfolds, however, it becomes clear that Rebecca may have not been as angelic as she seemed, and the "accidental" nature of her death is soon called into question . . .

Rebecca is a powerful, gripping novel that many young girls will be able to relate to, with its themes of competition with other women and identity crisis. Manderley is a brilliant depiction of your typical gothic mansion, with a hellish twist, prowled by an overbearing ghost and a sinister housekeeper, bearing a perverse obsession with the former Mrs de Winter.

Rebecca is a book that will surely resonate with many readers, with its themes of Crime, Mystery, Horror, and Twisted Romance, paired with a shocking twist that will leave you reeling. ■



**kevin f finnis**  
flooring preparation & fitting Specialist



**K F Flooring**

Over 30 years experience  
in preparation, supplying  
and fitting of quality flooring,  
carpets and Amtico flooring.

All hard flooring.

Capping and coving.

Wet rooms.

**07900 245621**  
**01403 790409**

[finnisflooring@hotmail.com](mailto:finnisflooring@hotmail.com)  
Advice and free estimates given.

**CRANLEIGH** t: 01483 346503  
**Clean** www.cranleighclean.co.uk  
Regular domestic cleaning you can trust:  
ovens, carpets and upholstery, mattresses, end of tenancy  
deep cleaning, windows, fascias and gutters.  
e: [robashbee@cranleighclean.co.uk](mailto:robashbee@cranleighclean.co.uk)

## Cranleigh Village Care

### Can we help you?

Visits to hospital or health centre, dentist or chemist,  
collecting shopping, sitting with someone while you  
go out, etc. Our volunteers offer a caring,  
friendly service.

### Can you help us?

New volunteers always needed. Please ring for  
information. (Donations greatly accepted to cover costs.)  
Ring Between 10am and 12 noon, Monday - Friday

**T: 079 089 763 94**

**ALFOLD** www.alfoldmowers.co.uk  
**MOWER CENTRE**

Alfold Mower Centre offers the highest quality of  
Products and Services on the market today.

t: 01403 751680 m: 07768 453179

[nigelbudd@hotmail.co.uk](mailto:nigelbudd@hotmail.co.uk)

Dunsfold Road, Alfold, Surrey GU6 8JB







## Summer's not far away

**A**s bulbs fade and plants start to grow in leaps and bounds, it is exciting to know that the warmer weather is approaching. Sowing and planting out bedding can start, depending on regional weather variations, and you can take soft-wood cuttings. It's also time to start getting back into mowing the lawn again, as the lawn will be loving the warmer temperatures this month brings. So get out there.

## Top Tips

- Watch out for late frosts. Protect tender plants
- Earth up potatoes, and promptly plant any still remaining
- Plant out summer bedding at the end of the month (except in cold areas)
- Collect rainwater and investigate ways to recycle water for irrigation
- Regularly hoe off weeds
- Open greenhouse vents and doors on warm days
- Mow lawns weekly
- Check for nesting birds before clipping hedges
- Lift and divide overcrowded clumps of daffodils and other spring-flowering bulbs
- Plant asparagus crowns.
- Watch out for viburnum beetle and lily beetle grubs

*Cromwell Coffee House-Homemade Food*



CHARTERED CERTIFIED ACCOUNTANT

**Bernard Brace**

FCCA

A locally based, friendly accountancy company with expertise in Business Structures for new start-up businesses and existing established companies. Why not call us for a **FREE** no obligation consultation. For more information, contact us on

**t: 01483 267437**

**f: 01483 267384**

**m: 07860 623122**

**Email: [bernard.brace@btconnect.com](mailto:bernard.brace@btconnect.com)**

**52 Smithbrook Kilns, Cranleigh,  
Surrey GU6 8JJ**

## PONDS

Construction

Planting

Filtration

Maintenance

Hard and Soft

Landscaping

**Over 35 Years Experience**

We have been building and maintaining ponds in and around Cranleigh for the last 20 years. Summer is on its way, so now is the time to clean out your pond filters and check pumps ready for the new season.

**01483 267384**



**LJ West**

**Painter & Decorator**

**m: 07957 361 390 h: 01252 676764**  
**[ljwest8@hotmail.com](mailto:ljwest8@hotmail.com)**

**General Property Maintenance**

**SUE KIDD**

**Architectural Designer MA (RCA)**

- Planning & Building Regulation Drawings
- 25 years Experience ● **FREE** Initial Consultation

**T: 01483 275342 M: 07757 284 457**

**[suekidd1@hotmail.co.uk](mailto:suekidd1@hotmail.co.uk) [www.suekidd.co.uk](http://www.suekidd.co.uk)**





## Cranleigh Village District needs more adult helpers.



Guides at a recent event at London's Alexandra Palace where they were trying out zorbing, rollerblading, climbing, laser light cave, a silent disco and much more

**G**irl Guiding Cranleigh District covers both Cranleigh & Ewhurst areas. We run four sections: Rainbows for girls aged 5-7, Brownies for girls aged 7-10, Guides for 10-14 year olds and the Senior Section for 14-18 year olds. All this is made possible thanks to the support of our adult volunteers. Currently 170 girls are active members in our District and all are having a fantastic time.

Girlguiding gives girls a safe space where they can be themselves, have fun, make friends, try new things, gain valuable life skills and make a positive contribution to their communities.

"I have made lots of new friends being part of Guiding and love spending time with them each week doing lots of exciting and different activities." Willow, Brownie aged 8.

Unfortunately we also have too many girls currently waiting to join Rainbows or Brownies. Some girls have waited for such a long time, they have missed their opportunity to be part of Girlguiding. Our waiting list for Rainbows can be over two years; Brownies currently have to wait up to 18 months to join.

We desperately need more adult volunteers to help us open new units or support our existing ones. Could you volunteer some time each week? Our volunteers receive all the training and support they need.

Even if you cannot commit to helping weekly but would still like to get involved, there are many other areas we need help with. If you have an interesting skill or job that could give our girls inspiration, knowledge, or skills, then please get in touch. We'd love to invite you along to our sessions.

If you're interested or would like to find out more, please email [cranleighguiding@gmail.com](mailto:cranleighguiding@gmail.com)



### EWHURST BOWLING CLUB

If you would like to try your hand at bowling, Ewhurst Bowling Club warmly invite you to our 'Bring a Friend' Day on Saturday 14th May at 2pm. We look forward to welcoming you to our friendly club. Please contact Richard on 01483 277494 or Nigel on 01483 272513 or just come on the day.

We are also holding a Bowls for Beginners U3A Course on the following Mondays, 23rd May, 6th, 13th and 20th June from 2pm to 4pm. Please contact Nigel Sloman on 01483 272513 if you would like to join his group, where you will be made very welcome.

You will be made welcome on both the above invitations, the only requirement will be flat soled shoes, all other equipment is provided.

### Investec International Music Festival 2016 Tickets now on sale!

The Investec International Music Festival 2016, one of the region's cultural highlights will take place across the Surrey Hills from 5th-7th May 2016. With a star studded 'not to be missed' line-up that includes: Nicola Benedetti, the world renowned classical violinist; the much acclaimed Dmitry Sitkovetsky and Clare Teal!

For more information contact:  
**Jane Newick, The Wordbox,**  
t: 01483 243671 m: 07907 566773  
[jane@thewordbox.com](mailto:jane@thewordbox.com)

*Cromwell Coffee House-Homemade Food*







**2 BRIGHT SPARKS**  
 MARK & JON NICEIC APPROVED  
**ELECTRICAL SERVICES**  
 Extra points, fuseboards, refurb, rewiring  
**FREE INSPECTIONS & QUOTES**  
 Call Mark. Cranleigh 276523 Mobile 07770 888570



**G. B. FENCING & TREE SURGERY**  
 FREE ESTIMATES FULLY INSURED

- All types of fencing supplied & erected
- Hedge Cutting
- Stump Removal
- Groundwork
- Landscaping
- Roof Moss Removal

TEL: 01403 824048  
 MOBILE: 07714689824

**CHEAP HARDWOOD LOGS FOR SALE**

**GORDON WELLS**  
 CARPENTER JOINER HANDYMAN



14 Plaistow Road, Loxwood,  
 Billingshurst, Sussex RH14 0SX  
**07890 469 231**  
 wellsga@orange.net

# Waller & Smith

## Landscape & Driveway Construction

Patios, Paths, Driveways,  
 Hard Landscaping, Block Paving and Fencing



For all your landscape or driveway construction we produce quality, crafted workmanship at good prices!

**01483 276913**  
**07860 748938**  
 info@wallerandsmith.co.uk  
 www.landscapercranleigh.co.uk

# CRANLEIGH EXHAUST CENTRE Ltd



- SERVICING
- REPAIRS
- DIAGNOSTICS
- AIR CON
- EXHAUSTS
- TYRES
- MOT

**MOT's**

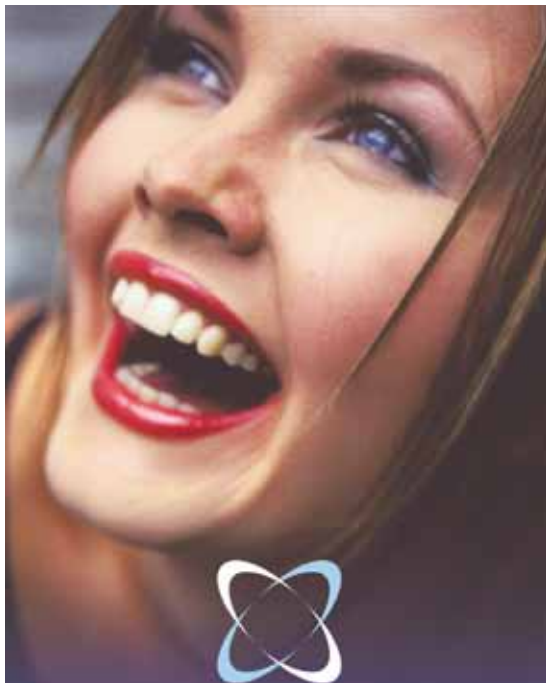

- Cars
- Vans
- Minibuses

Class 4, 5 & 7



Incorporating  
**Cranleigh Car Clinic 01483 276550**

Free local collection and delivery  
**01483 278 060 / 267 759**  
 Unit 7 Manfield Industrial Park Cranleigh Surrey GU6 8PT


**Kelsham**  
DENTAL CARE  
CRANLEIGH

**A friendly caring family dental practice offering quality private dental care**

Nick Green Emma Cotton  
& Associates

- Private
- Denplan
- NHS Children
- New Patients Welcome
- Dental Implants
- Cosmetic Dentistry
- Preventative
- Emergency
- Dental Hygienist
- Smile Whitening

Easy access for elderly and disabled patients



Denplan

**Call: 01483 274552**  
[www.kelshamdentalcare.com](http://www.kelshamdentalcare.com)  
[enquiries@kelshamdentalcare.com](mailto:enquiries@kelshamdentalcare.com)  
The Common Cranleigh Surrey GU6 8SN



## Cranleigh Food Bank



### In need of **EMERGENCY FOOD?**

We are here to HELP!

Hosted by Cranleigh Baptist Church  
open on 1st, 3rd and 5th Friday of the month,  
from 10 am to 12pm

Join us at our Drop In Cafe!!

**01483 275371**

email [office@cranleigh.org.uk](mailto:office@cranleigh.org.uk)

## **RJ**IMMISON ELECTRICAL

New installations, Rewiring, Extra points,  
Electrical Problems.

**01483 271608 M:07852 503517**

Domestic, Commercial, Industrial & Agricultural

## GWYN BULLEN *Gardens*

**DESIGN - CONSTRUCTION  
MAINTENANCE  
RESTORATION - RENOVATION**

**Tel: 01483 548 298  
Mob: 07733 270 625**

Email: [gwynbullengardens@gmail.com](mailto:gwynbullengardens@gmail.com)

## Cranleigh Bathroom Studios Ltd



**T: 01483 272727**

246 High Street, Cranleigh, GU6 8RL  
[craig@cranleighbathroomstudios.co.uk](mailto:craig@cranleighbathroomstudios.co.uk)





# Glebelands School

## JUGGLING: THEORY & PRACTICE!



Science



Dr Colin Wright, the presenter of the popular science Juggling Talk series and a former President of the Liverpool Mathematical Society presents this ever popular show.

This talk demonstrates some basic patterns in juggling and then starts to look at them in detail.

As we go we discover things impossible to see from just a casual encounter, and find that there are ways of juggling that were only discovered as recently as the 1980s!

Suitable for age 11 upwards and free to all members of the local community on a first come first served basis.

**Date: Thursday 5<sup>th</sup> May at 7.00pm**

**Venue: Glebelands School, Parsonage Road, Cranleigh, Surrey GU6 7AN**

For tickets please email [communitysecretary@glebelands.surrey.sch.uk](mailto:communitysecretary@glebelands.surrey.sch.uk)

or call telephone number:- 01483-542400.

## Have you ever considered teaching as a career?

More and more people in the local area are and they are beginning to turn their thought into a reality. Glebelands has been working with Teach@Weydon SCITT and its partnership of Surrey and Hampshire schools to find people passionate about their subject and who want to make a difference to the lives of young people.

We have found that there is a wealth of individuals in the community who have either just finished university, or who have been successful in their career and are now ready for a new challenge. The problem they experience is that they don't know how to take the next step into teaching. We think we have the answer.

**Did you know that if you are considering a career in teaching, you could:**

- Spend a day with us at Glebelands or in one of

our partner schools to experience what it would be like to teach.

- Join us for a presentation at Glebelands about our school-based teacher training programme on Tuesday 10th May at 6.30pm.

If you would like to join us at Glebelands for the presentation on **Tuesday 10th May** please sign up now by emailing Mrs Judd at [communitysecretary@glebelands.surrey.sch.uk](mailto:communitysecretary@glebelands.surrey.sch.uk).

To find out more about any of these training opportunities, and to begin your journey into changing young peoples' lives for the better, contact Tammy Cresswell at Weydon School on

[TCresswell@weydon.school.surrey.sch.uk](mailto:TCresswell@weydon.school.surrey.sch.uk) or text Teach to 80011. **We look forward to seeing you.**



at

Oliver House, 97 High Street, Cranleigh GU6 8AU  
Telephone 01483 273783



**VENTURI**  
HEATING SERVICES

Confiant

01483 548743  
07515 531983

info@venturiheating.co.uk

Grogan Freedman will be exhibiting a selection from his latest collection of paintings at Seymours Estate Agents in Cranleigh High Street, from **Tuesday 15th June**. (opposite the Village Hall)

**DM** HANDYMAN SERVICES  
HOME IMPROVEMENTS



[www.dmhandymanservices.co.uk](http://www.dmhandymanservices.co.uk)

G.U.  
Pest Control  
**Cranleigh  
Pest and Mole  
Control**

The Wasp Man  
The Flea Man  
The Spider Man  
The Bee Man  
The Snake Man  
The Mole Man  
The Squirrel Man  
The Ant Man

**Qualified,  
Insured,  
Professional  
For ALL  
types  
of pest control**

01483 299 307 07900980194



## Computer support

- Desktop and Laptop Repairs
  - PCs & Mac Sales and Advice
  - PC Tuneup and Upgrades
  - Virus Removal and Protection
  - Networking
  - Broadband
  - Business Support
  - Data backup and recovery
- 

**Check**professional.com  
Where reputation matters.

**Broad Oak Lodge, Horsham Road  
Cranleigh Surrey GU6 8DJ**

01483 274896 [sitecit.co.uk](http://sitecit.co.uk)





## Who is our neighbour?

This Year, the theme for Christian Aid's house to house collection week from 15th to 21st May is supporting and enabling our neighbours in far flung countries to work, feed and support themselves.

Jane O'Leary and Gill Leslie are again organising the house to house delivery and collection of envelopes in Cranleigh and if you can spare a couple of hours from **15th to 21st May**, we would love to hear from you: **01483 276100** for Jane during work hours or [joleary@oaktax.com](mailto:joleary@oaktax.com).

Volunteers already come from all faiths and none, as the organisation known as Christian Aid helps all in need not just Christians. Please be generous with your time and your money for this year's appeal. **Thank you.**

## Rotary & Cranleigh's Fairtrade gold



**T**he Rotary Club of Cranleigh is pleased to welcome Fairtrade gold jeweller Jon Dibben as the guest speaker at their meeting on Thursday 5th May.

Jon Dibben is based at Smithbrook Kilns and was one of the first 20 designers to be licensed to make jewellery using the world's first Fairtrade and Fairmined certified gold and platinum.

Jon's debut design for the first batch of Fairtrade and Fairmined gold to enter the country, was recognised by the British Jewellers' Association as a landmark piece. The work was selected for the Association's anniversary exhibition to represent 2011, which is the year Fairtrade and Fairmined gold was launched and Jon designed and made the ring.



Jon Dibben has been voted as an 'Inspiring Independent' by the trade's 'Retail Jeweller' magazine for two consecutive years, and by 'Professional Jeweller' magazine as a 'Trend Setter' in their 'Hot 100'.

Jon's reputation as an ethical fine jewellery designer has also been recognised locally. In 2011 the Cranleigh Fairtrade Group recognised Jon's flagship business and presented him with his Fairtrade certificate.

Fairtrade is important to Cranleigh and this is reflected by the village's attainment of the Fairtrade status in 2012. Cranleigh renewed its status in 2013 and 2015 and this is celebrated by the installation of two village entry signs welcoming visitors to the Fairtrade village.

The Rotary Club of Cranleigh has interesting speakers for some of their weekly meetings that inform, engage with or support the many and varied community and fundraising activities that this Rotary Club undertakes throughout the year. Our next event will be the Burger stall at the Cranleigh Carnival Day in June and if you are interested in joining a vibrant, local and community-focussed group, please call the membership secretary Andrew Kolmar on **01483 274547**. ■



## We are Special Sisters Meet Isabelle and Siena

Isabelle and Siena are 2 very special sisters. Isabelle is 8 years old whilst Siena is just 2. They both suffer from severe epilepsy that is caused by an, as of yet, undiagnosed condition.

The girls desperately need funds to get them to a special clinic located in America, specialising in the treatment of children with drug resistant epilepsy. Whilst this is the main goal, both little girls need consistent therapy to fight against their developmental delay and to help them reach their maximum potential. Some of these therapies include physiotherapy, language therapy, and hydrotherapy.

At the time of writing, Siena is going through a rough patch in St. George's hospital, and still has lots of challenges to overcome before she can come home to her family. Having seen Siena's struggle, **Simon Casse** has signed up for a **100km marathon** across sloping countryside, starting at London and finishing in Brighton. Simon will be starting this marathon on the **28th May**. His goal for this feat is 15 hours.

He has already begun his training for this difficult challenge, spurred on by Siena's need. Simon would love to reach his target, so please sponsor him if you can. *Just go to <https://crowdfunding.justgiving.com/simon-casse>*

**Alternatively**, there are official **Special Sister Collection** boxes in Handyman's Hardware on the Cranleigh High Street, and in Bricks restaurant and memories collectables at Smithbrook Kilns.

If you happen to be one of the celebrities of Surrey, perhaps you might consider leaving a message on the special sister's Facebook page for the girls.

**Thank you, on behalf of Isabelle and Siena.** ■



# Maybe try it

## a meal for four

### RECIPES

**T**o continue this month's theme, a three course menu features fresh strawberries, a produce of the fertility of spring, and quail egg to symbolise new life. This recipe is designed to inspire you to recognise and celebrate the season with family and friends.

## 1 Brodetto all' uovo di quaglia (broth with quail egg)

### Ingredients

1lt of good stock (chicken or beef, degreased)  
75ml of dry sherry (Tio Pepe)  
4 quail eggs  
1 medium size carrot  
1 white stick of celery  
2 spring onions or 1 small leek

### Preparation

**1.** Cut the vegetable into a Julienne (strips 4cm long and 2mm thick)

**2.** Prepare 4 suitable soup bowls with one shelled quail egg in each and refrigerate

**3.** Plunge the Julienne (except the spring onions) in boiling, salted water for 1 minute and drain

**4.** Place the Julienne (including the onions), in the stock and bring it to the boil. In the meantime prepare the soup bowls for serving

**5.** When the stock and Julienne are boiling, add the sherry and when it reaches boiling point again, immediately divide it into the 4 bowls

**6.** Serve at once

*This dish goes well with parmesan cheese and Grissini (breadsticks)*



*Cromwell Coffee House-Homemade Food*

[www.cranleighmagazine.co.uk](http://www.cranleighmagazine.co.uk)



## 2 Saltimbocca e Peperonata

### Ingredients for the Saltimbocca

8 x 80g veal (or pork) steaks cut from the loin  
8 slices of Parma ham  
16 leaves of fresh Sage  
100ml good stock  
50ml dry Marsala  
Olive oil and butter as needed (proportion 70/30)  
2 shallots finely chopped  
Seasoning

### Ingredients for the Peperonata

1 sweet red pepper  
1 medium sized aubergine  
1 medium sized onion  
1 large courgette  
1/2 tin of chopped tomatoes  
10 sprigs of parsley roughly chopped  
50ml oil and 30g butter  
Seasoning

### Preparation for the Peperonata

*(This should be ready and kept hot by the time the steaks are cooked)*

1. Wash and cut all the vegetables into about 20mm cubes
2. In a suitable saucepan (preferably non stick) heat the fat and fry all the vegetable stirring at intervals
3. When the ingredients are soft, season to taste and transfer into an oven proof dish, cover and place into an oven at 100°C until required

### Preparation for the Saltimbocca

1. Beat the meat to 5mm thick
2. Heat oil and butter in a large frying pan and when the fat is really hot, seal the meat. Repeat this operation until all the steaks are sealed
3. Place two sage leaves in the middle of each steak and wrap each in one slice of Parma ham, keep it flat
4. Again heat the fat and gently cook all the steaks for no longer than 10-12 minutes. It is important that the pan is not washed until cooking has terminated but it is used again and again so as not to lose the cooking residue
5. Make sure that all the steaks are kept hot after being cooked
6. After the last steaks, cook the shallots and when nice and soft, add the stock. Reduce by half over a lively heat and then add the Marsala, reduce again stirring all the time. By now the stock, Marsala and the cooking residue from the meat, will have formed a sauce
7. Season to taste

### To serve

Place the Peperonata into one or more large serving platters, place the meat over it and pour the sauce over.

Garnish with watercress and serve  
Boiled new potatoes (Jersey Royal), are the ideal accompaniment



## 3 Strawberry delight

### Ingredients

500g fresh strawberries  
350ml double cream  
100ml Di Saronno Amaretto  
16 leaves of mint  
100g soft light brown sugar  
16 Savoiardi biscuits

### Preparation

1. Wash and hull all the strawberries (except the four largest ones which are set aside) and roughly chop them
2. Whip the cream and sugar
3. Gently mix into it the Amaretto and then the chopped strawberries
4. Divide the mixture into 4 suitable dishes, place on each a saved strawberry and two leaves of mint
5. Serve with 2 Savoiardi per person

Buon Appetito **Giovanni Fontebasso**





# Creative Brand Design

**01483 277 547**  
www.cbwebsitedesign.co.uk

## RANK YOUR WEBSITE ON SEARCH ENGINES



MOBILE FRIENDLY, SEO OPTIMISED WEBSITE DESIGN  
WITH EMAIL SETUP & WEB HOSTING

**CRANLEIGH TAXIS** T: 01483 277223  
Cranleigh's Number 1  
taxi company for local, airport & long distance trips  
e: office@cranleightaxis.co.uk www.cranleightaxis.co.uk

For Wedding Dress sales & enquiries.  
Dress & Tailoring alterations

CRANLEIGH *Bridal*  
**01483 274853**

PAINTER & DECORATOR

**CRAIG PIERCE**

www.cpdecorating.co.uk  
**07941 869503 01483 299610**

### DAVID HOWICK LANDSCAPES

- GENERAL LANDSCAPING
- GARDEN DESIGN, CONSTRUCTION
- GARDEN CLEARANCE & MAINTENANCE
- FENCING
- TREE SURGERY
- HEDGE CUTTING

References Available

**FULLY INSURED**

TEL: 01403 752110

MOB: 07889 853024



*D.C. Ball* Est. 1970  
**Horological Restoration**  
Clock and watch sales. Watch straps and  
batteries fitted while you wait!  
T: 01483 898 277  
jeandgball@aol.com  
20 High Street, Bramley, Surrey, GU5 0HB

**Keith Skerry**  
HOUSE CLEARANCE  
& RUBBISH DISPOSAL  
T: 01243 264 556 M: 07929825901  
k.skerry@btinternet.com  
19 Strathaven Close, Cranleigh, Surrey GU6 8PW

Buy and sell antiques!



### titchmarsh TREE SURGERY SERVICES

- Landscaping • Tree Surgeons •
- Stump Removal •
- Hedge Cutting / Planting • Fencing •
- Rubbish Removal •

T: 01483 892 939 M: 07814 211671  
T: 01403 752 152

info@titchmarshtreesurgery.co.uk  
www.titchmarshtreesurgery.co.uk  
30 Years Experience References Available



# Cranleigh Funerals



COMPLETE FUNERAL FURNISHERS -  
PRIVATE CHAPELS - MONUMENTAL MASON

**'A caring privately owned independent family business'**

**01483 275 758** (24hrs)

**IMMEDIATE ATTENTION DAY OR NIGHT**

Sussex House, Ewhurst Road, Cranleigh, Surrey GU6 7AE



**DART**  
DESIGN

creating  
ideas,  
logos,  
print,  
advertising,  
publicity  
material,  
exhibitions,  
packaging,  
web design

**Art & Design**

on **01483 275054**

inform@dartdesign.co.uk [www.dartdesign.co.uk](http://www.dartdesign.co.uk)

*Buttons and Bows*

Dressmaking and Alterations

**01483 267767**

Helen Kolmar

[helen@buttonsandbows.info](mailto:helen@buttonsandbows.info) [www.buttonsandbows.info](http://www.buttonsandbows.info)

Unit 2 The Old Bakery, Kent House, 91 High St, Cranleigh, Surrey GU6 8AU

**Janet Mitchell**



Art Classes, Walliswood  
Village Hall, Monday 2-4pm  
Beginners welcome.

Ring and book a class!

**01306 627 322**

email: [jamit37@btinternet.com](mailto:jamit37@btinternet.com)

Friendly atmosphere. Tea is provided.

**MEMORIES**

**Collectables & Antiques**



At 'Memories', you will find an eclectic mix of Vintage, Retro, up-cycled and Shabby Chic pieces; pre-loved decorative items, Clock and Mirrors, Ceramics and Glassware, Standard lamps, Coins and Stamps, and a selection of ever-changing

**01483 277488** treasures that are Edwardian, Victorian, or earlier!

**07549 991140**

[colum@cillchua.plus.com](mailto:colum@cillchua.plus.com)

**OPEN 10am-4:30pm**

2 Smithbrook Kilns, Cranleigh, GU6 8JJ **Tues-SAT**  
(Closed Mon & Sun)



## Catherine Pike (1920 – 2016) Cranleigh Arts Centre



*Dr Catherine Pike at Blackheath Fair*

**D**r Catherine Pike, one of our best known and loved local residents, passed away in January 2016.

Born in Glasgow, in a family of doctors, she had a distinguished medical career and was a leader in the research and practical application of medicine for women, notably in breast cancer screening. She was consultant cytologist at St Luke's Guildford

She was also one of the visionaries who led the creation of Cranleigh Arts Centre as we know it now, in the heritage building on Cranleigh High Street which had been the village school. 'She had come to know the Arts Centre through her work as Councillor for the Arts at Waverley Borough Council. Her enthusiasm and passion for the arts were immediately apparent and she became Chairman of the Board in 1995, leading the Centre for nine years.

Jack Wagg, her predecessor as Chairman, had laid the foundations by working with Arthur Gomez, architect, to establish a strategic plan for the eventual design of the Centre. In the 1990s thoughts were turning to the next stage of growth - to fill in the empty space inside the 'U' shape (the old playground) with a multi-purpose hall (now called the Jack Wagg Hall) and to refurbish the building completely.

Catherine played a leading role in the grant applications in 1995 to the Arts Council and to the Foundation for Sports and the Arts. These were successful in raising more than £1million and Catherine spent much of the following eighteen months paying close attention to the design of the interior of building, from the foyer to the clock in the tea bar. When the Arts Centre re-opened in 1998, with a bright new building and lots of potential, the challenge for the Board was to create a programme worthy of the building and to staff it.

Catherine's Chairmanship was momentous for the Arts Centre. Her relentless focus on the purpose of her task drove her forward - and the others with her. She stepped down in 2004 and continued as a volunteer until very recently, her passion and her support for the Centre undimmed.

She is remembered fondly for always having a firm opinion and her drive to ensure that the participation and performance of the arts in Cranleigh gave enjoyment to all ages of the community. She always displayed common sense, without fuss or frippery; and had a 'can do' attitude that she had carried with her throughout her own career in medicine, local government and the arts sector.

She wholeheartedly supported in 2014 the new relationship of Cranleigh Arts Centre with the Martin Music Scholarship fund of the Philharmonia Orchestra of London which provides funding and dates for the best young international chamber musicians coming out of the Royal Academy, Royal College and Guildhall Schools of Music. Recital of chamber music in Cranleigh is now well established. Catherine attended them all and also enjoyed live theatre and film at the Centre.

Catherine Pike's memory will be celebrated at Cranleigh Arts Centre at 6pm on Wednesday 8th June.

Ticket holders for the flute recital by Hugh Roberts, which starts at 7.30pm, are invited to complimentary drinks and canapés, with family and friends of Catherine, in the Crane Room prior to the recital. Hugh, from New Zealand, will perform works by Hindemith, Messiaen, Barber, Poulenc, Roussel, Reinecke and Boehm.

Please contact Cranleigh Arts Centre box office on 01483 278000. Ticket prices are £16 (full), £15 (Friends of Cranleigh Arts Centre) and £10 (Students or under 16) ■



### Summer Fun at the Ewhurst Carnival

The Ewhurst carnival in association with the Ewhurst Horticultural Society summer show is back and this year the theme is 'Ewhurst at the Movies'.

Join us on **Saturday 16th July from 12:00** at the cricket green for a colourful procession of film stars and characters, to the recreation ground where the carnival opens at 12:30pm. Win prizes at our fun dog show & best fancy dress, ride the Zorbs, feast on local produce and enjoy a cup of tea and a piece of cake or a tipple from the beer tent. With children's entertainment, local artisan stalls, live music, displays and traditional stalls run by village groups and societies and a huge raffle - there is something for all the family to enjoy.

All profit raised on the day will be ploughed back in to the community. Last carnival we donated to local groups and causes as wide ranging as the Village Hall kitchen refurbishment fund, St Peter and St Paul Church, Rainbows End pre-school and the Ewhurst Stoolball, Football and Bowls clubs.

If you are a local business and wish to support this village fundraising initiative and optimise exposure for your company locally please get in touch at [info@ewhurstcarnival.co.uk](mailto:info@ewhurstcarnival.co.uk) - we'd love to hear from you.

In the evening enjoy LIVE MUSIC with the Fabulous Nobodies - talented Ewhurst musicians will entertain you from 8pm - get in touch at [tickets@ewhurstcarnival.co.uk](mailto:tickets@ewhurstcarnival.co.uk) for evening tickets.

Follow us on facebook or visit [ewhurstcarnival.co.uk](http://ewhurstcarnival.co.uk) for the latest news.







## Cranleigh Arts Centre Maybe 2016

### Live Music: Acoustic Night

**Friday 8 April, 7:30pm**

Come along to this relaxed and enjoyable night of live music, hosted by Cranleigh Arts Centre.

Featuring music by local musicians, Charlotte Maggs, Emilee Lucia and Lucina Pearson. Find a table, sit back and relax with a glass of wine or cup of coffee in our beautiful gallery. **Tickets: £7.75**



### Theatre: A Day in the Lives of Frankie Abbott – A Comedy by David Barry

**Friday 6 May, 7:30pm**

What happens when a fantasist with a fading memory recalls events from years ago? Frankie Abbott now in a care home, is helped by Marion, one of the carers, to remember. The fun starts as the mother-smothered, big talking buffoon reverts to a past littered with guns, girls and gangsters. A comedy with David Barry from "Please Sir" and "The Fenn Street Gang" and Linda Regan from "Hi-De-Hi".

The performance will be followed by a Q&A session.

**Tickets: £13.25**



### Children's Theatre:

#### CAPTCHA Theatre presents Little Red

**Saturday 7 May, 11am**

Everyone loves cake, especially Wolfie! But Grandma's sick, and Little Red has promised Mother that she will deliver the cake safely to Grandma's house to make her feel better. Will the cake make it to Grandma's House? Little Red features songs, puppets, audience interaction and the story we all know and love plus a few surprising additions. Fun for all the family and perfect for audiences under 6 years of age. Please note this performance has unreserved seating, so please bring a cushion! **Tickets: Adults £7.70, Children £5.50**



### Entertainment:

#### LDN Wrestling

**Saturday 7 May, 7.30pm**

Boo the bad guys and cheer on your favourites, as you get the opportunity to get up close and personal with the rip-roaring action. See the



highest quality, fastest paced, non-stop wrestling action ever seen on these shores. Suitable for all ages.

**Tickets: £13.20**

**(£11 under 16 years, £44 family of four)**

### Exhibition: Florilegium -

#### A Gathering of Flowers

**Tuesday 10 May – Saturday 11 June**

An eclectic mix of traditional botanical painting and stunning contemporary photography shown alongside preserved plant specimens, garden ephemera, an unusual use for pressed flowers and a surprising floral display by the Arts Centre Knit and Natter group. To accompany the exhibition there will be an opportunity to learn the art of pressing flowers taught by the Keeper of the RHS (Wisley) Herbarium.

**Free entry**



### Classical Recital:

#### Cranleigh Arts Centre presents pianist, Arisa Onoda

**Wednesday 11 May, 7:30pm**

Arisa is already making a name for herself in the classical world and has won many prizes, including first prize in The Chopin International Piano Competition in Asia, and first prize and Grand Prix in the Juliusz Zarebski International Piano Competition. She has performed recitals in Japan as well as with the Panocho String Quartet, and the Poland Silesia Philharmonic Orchestra.

**Tickets: £16 (£15 Friends & £10 Students and 16 years and under)**



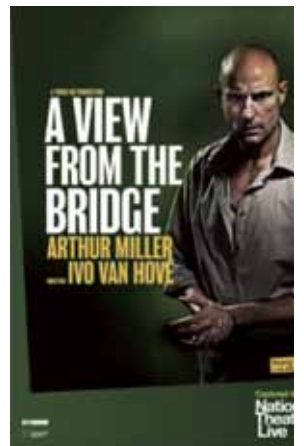
### National Theatre Live presents: A View from the Bridge (12A)

**(encore)**

**Thursday 12 May, 7pm**

Following its smash-hit original broadcast, the Young Vic's 'magnetic, electrifying, astonishingly bold' production of A View from the Bridge returns to cinemas due to audience demand. The great Arthur Miller confronts the American dream in this dark and passionate tale. In Brooklyn, longshoreman Eddie Carbone welcomes his Sicilian cousins to the land of freedom. But when one of them falls for his beautiful niece, they discover that freedom comes at a price.

**Tickets: £17.50**



### Adults' Workshop: RHS Wisley presents a Pressed Flower Workshop

**Saturday 14 May,  
10:00am – 1pm**

Celebrate the arrival of spring by learning how to preserve plants the RHS way. Join Yvette Harvey, Keeper of the Herbarium at RHS Wisley, in this one off Pressed Flower workshop. Participants will be able to use live cuttings from RHS Garden Wisley and there will also be the opportunity to keep samples of work at the end of the workshop.

**Tickets: £49.50 (Please note: places are limited in this workshop)**



### Comedy: Mark Steel: Who Do I Think I Am?

**Wednesday 18 May, 8pm**

See Mark Steel in his newest stand up show, a surprising and enthralling story told with aplomb. Previously, Mark has written and presented Mark Steel's In Town on BBC Radio 4 and toured it live around the UK. Mark has presented the BAFTA nominated Mark Steel Lectures for BBC2, is a regular on BBC One's Have I Got News For You and Radio 4's Newsquiz.



\*\*\*\* The Guardian 'He has got an amazing tale to tell.'

**Tickets: £16.50**

### Film: Home Care Thursday 19 May, 8pm

Dedicated home care nurse Vlasta lives for her husband Lada, her daughter and her patients. But then one day things change and Vlasta is forced to reach outside of her comfort zone. Drama and gentle humour intertwine as Vlasta realizes that she might need some care too. Home Care is a Czech drama film directed by Slávek Horák. This screening is part of Dementia Awareness Week, which runs from 15 - 21 May, 2016.

**Tickets: £8.25 (Friends £7.15, 16 years and under £5.50)**



### Theatre: Sleeping Trees present: Sci-Fi?

**Thursday 26 May,  
8pm**

Sleeping Trees are an award-winning, highly physical character-comedy trio. Brand new show "Sci-Fi?" follows the journey of the unlikelyst of heroes, happy-go-lucky farming boy, Charlie Sprog. After a minor malfunction with his space tractor, Charlie winds up on a neighbouring planet, all on his own without a clue how to get home. **Tickets: £13.20 (£11 Students)**



### Live Music: We Remember Joe Cocker

**Saturday 21 May, 8.30pm**

The 50 year musical legacy of the late, great Joe Cocker is celebrated by this superb international seven piece band, featuring Paul Cox on vocals, 'with a little help from his friends!'. The hits are nearly endless, including 'Delta Lady', 'The Letter', 'Unchain my heart', 'You can leave your hat on', 'You are so beautiful', 'Night calls' and 'Shelter Me'.

**Tickets: £21.75 (£19.75 in advance) Balcony seating £26.75**



### Live Music: Fred's House Saturday 28 May, 8pm

The five piece band mix elements of Folk/Pop, Country, Rock and West Coast with a 70's retro vibe but presented in a fresh and modern way.

Their songs feature rich boy/girl vocal harmonies on a backdrop of guitars lending themselves to comparisons to Fleetwood Mac and Fairport Convention. Fred's House won Best Folk/Roots Band and Audience Choice Award at this year's annual NMG Awards. [www.fredshousemusic.co.uk](http://www.fredshousemusic.co.uk)

**Tickets: £13.20 (Students £11)**



### BOX OFFICE INFORMATION

01483 278000 (Tues-Sat 10am-4.30pm) or visit [www.cranleighartscentre.org](http://www.cranleighartscentre.org)

For further information or images - please contact: Jane Howard on **01483 278001** or email [jane@cranleighartscentre.org](mailto:jane@cranleighartscentre.org)  
Sign up to our e-newsletter / facebook / twitter





**May 2016 -  
Ewhurst Players Present  
a Comedy Double Bill & Supper**

Please join us on the **18 – 21 May** for an evening of comedy and food as the Ewhurst players offer you Two for the price of one!! A return to our popular supper evening as we present a Double Bill of One Act Comedy's by David Tristram.

***'The Fat Lady Sings in Little Grimley'***

Gordon, Margaret, Joyce and Bernard are back to tackle yet another threat to their survival - this time in the shape of a rival am-dram, newly-formed in their village, determined to upstage them with an award-winning musical. The querulous quartet pull together to devise an ingenious military-style plan that doesn't, well, go quite to plan!

***'What's For Pudding?'***

Jack and Mary are preparing themselves for yet another stultifyingly boring night in, when the doorbell rings unexpectedly. What follows is a series of anarchic comic revelations, as we meet their friends Ted and Maureen, and the foursome proceed to get the wrong side of a bottle of whiskey. Their antics are witnessed by a bemused Dennis, who only turns up to order a pair of brown flared trousers from Mary's catalogue, but ends up with a lot more than he bargained for!

***Venue:***

**Ewhurst Village Hall (free parking available)**

***Dates:***

**18 - 21 May 2016 - 7.00pm. Please arrive promptly.**

***Details:***

**Doors open at 7pm. BAR AVAILABLE. Table seating - Tables of 8 (part booking available)**

***Tickets/Box office:***

**£12.00 each – Including Fish 'n Chips and a dessert. Box office opens 18th April at 9am. Telephone: 01483 272378 or Email: tickets@ewhurstplayers.com.**

Please see our website for more information about this and other forthcoming and past productions. [www.ewhurstplayers.com](http://www.ewhurstplayers.com) <<http://www.ewhurstplayers.com>> or find us on Facebook.



**Indoor Street Party**

**Saturday 11th June 3pm—5pm**

**At Cranleigh Baptist Church**

**This is for ALL THE FAMILY**

**But especially for those born in 1926  
ring to get a special invite**



**THE QUEEN'S  
90TH BIRTHDAY  
CELEBRATION**

**For more information or to book your places**

**Phone the church office on 01483 275371 or  
email [office@cranleigh.org.uk](mailto:office@cranleigh.org.uk)**



**COMMUNITY SHOWCASE**

**3.00 pm – 6.00 pm**

**FOLLOWED BY**

**ANNUAL PARISH MEETING**

**6.00 pm – 6.30 pm**

**SATURDAY 21<sup>st</sup> MAY 2016**

**VILLAGE HALL, HIGH STREET,  
CRANLEIGH**

**DURING THE AFTERNOON THERE WILL BE AN OPPORTUNITY FOR  
RESIDENTS TO TALK TO MEMBERS OF THE PARISH COUNCIL**

**LIGHT REFRESHMENTS**

**WILL BE SERVED IN THE COMMITTEE ROOM**

*Cromwell Coffee House-Homemade Food*



## Rowleys Centre for the Community

Rowleys provide a friendly and welcoming atmosphere for all its visitors. It's a great place to meet up with friends, enjoy a meal or one of our activities. You can also sign up to go on one of our popular day trips or weekend breaks.

There is no age limit at Rowleys, we welcome everyone of all ages to come along. Our regular visitors come from all around the Cranleigh district which includes Dunsfold, Bramley, Ewhurst, Shamley Green, Ellens Green, Alfold and Rudgwick but if you live a little further afield and would like to come along, there are no restrictions.

**Please telephone Gary in the office if you are interested in any of our services.**

### Services available:

- Chiropody ● Hairdressing ● Beauty treatments
- Lunch restaurant and snack bar ● Scrabble
- Films ● Brain teasers ● Yoga (Tues & Thurs Eve.)
- Sunfit Senior exercises ● Arts and Crafts

Room-hire available on some afternoons, evenings and weekends for your events including parties and weddings, christenings, business meetings, training days, funeral wakes.

Contact the office for details. **01483 277155** or  
Email: [info@rowleyscranleigh.co.uk](mailto:info@rowleyscranleigh.co.uk)



## Looking for a challenge or a new interest in 2016?

**Could you be the difference in our local community by becoming a volunteer first aider with St John Ambulance?**

No experience is necessary as all training is provided – the Cranleigh Unit is just looking for people who have a desire to help others. The highly trained volunteers provide first aid cover at many local events, and attend weekly meetings to practice and develop their first aid skills through scenario based training. By becoming a volunteer you could be the difference between a life lost or a life saved.

Anyone interested in joining the Cranleigh Adult Unit (18+ years) is welcome to pop into St John House, Littlemead Industrial Estate, on a Tuesday evening at 7.45pm.

To find out more, or for more information call  
Gerry McAteer, Unit Manager, on 07766 733680.  
[www.sja.org.uk](http://www.sja.org.uk)

<b>TRADITIONAL</b> HANDS ON  <b>T: 01403 273361</b>	<b>Window Cleaners</b> <ul style="list-style-type: none"> <li>● Est. 1991</li> <li>● Trustworthy Reliable</li> <li>● Quality Service Inside &amp; Out</li> <li>● All types of Windows &amp; Gutters</li> <li>● Cranleigh &amp; All Areas</li> </ul>  <b>M: 07980 394 957</b> 
---	--



## ATTENTION 4X4 OWNERS

We have 26 years experience of Jeeps, Land Rovers, Toyota, Mitsubishi and other 4x4's and can give you all the support you need from servicing and mechanical repairs through to restorations and customising

**Alfold Road, Dunsfold, Surrey. GU8 4NP**

**T: 01483 200046**  
[www.surreyoff-road.com](http://www.surreyoff-road.com)







**LCC Cleaning Services**  
COMMERCIAL & PRIVATE

- Carpets
- Conservatories
- Windows
- Soffits & Guttering
- Contract Office Cleaning

'Cleaner by far'

[www.lcccleaningservices.co.uk](http://www.lcccleaningservices.co.uk)  
info@lcccleaningservices.co.uk

**For FREE estimates call us on**

**t: 01483 268 617**  
**t: 01403 256 744**

**Laurence Tyrrell**  
Soft Landscaping

Hedge Trimming

Garden Services & Home Maintenance  
01483 271049 07779 929 845  
lpt@gmail.com www.lptgardenservices.com



**ROSS GAS HEATING AND PLUMBING**

BOILER BREAKDOWNS & SERVICING

LANDLORD CERTIFICATES 301585

TEL: 01483 268660 MOB: 07970 678354



**Patrick Normand**  
Kitchens, Bathrooms & Cupboards  
Stone & Marble Specialist  
Carpentry, Plumbing and Electrical

For friendly advice, design ideas and a competitive quote  
Call Patrick: 0771 0023 646 | Evenings: 01483 278334  
Email: patrick.normand@limeone.net

 **Auto Finishers Ltd**  
info@jcautofinishers.co.uk

All aspects of car body work undertaken from dents and insurance work to complete resprays and remodelling.

**01483 268111**  
[www.jcautofinishers.co.uk](http://www.jcautofinishers.co.uk)

Unit 1, Home Farm, Baynards Park Estate, Cranleigh, Surrey, GU6 8EQ



## Local information

### LIBRARIES

#### CRANLEIGH LIBRARY

High Street, Cranleigh. Tel. 0300 200 1001

Mon. closed all day  
Tues. 9.00 a.m. to 7.00 p.m.  
Wed. 9.00 a.m. to 5.00 p.m.  
Thur. 9.00 a.m. to 5.00 p.m.  
Fri. 9.00 a.m. to 5.00 p.m.  
Sat. 9.00 a.m. to 5.00 p.m.

#### BRAMLEY LIBRARY

High Street, Bramley. Tel. 0300 200 1001

Mon. closed all day  
Tues. 10.00 a.m. to 5.00 p.m. Wed. closed all day  
Thur. 2.00 p.m. to 5.00 p.m.  
Fri. 10.00 a.m. to 5.00 p.m.  
Sat. 10.00 a.m. to 4.00 p.m.

### CHURCHES & CLERGY IN CRANLEIGH

#### Church of England

Rev. Roy Woodhams.

The Rectory, High St. 01483 273620

#### Roman Catholic

Father David Osborne

St Nicolas Avenue 01483 272075

#### Methodist

Rev. Dr. Claire Potter

Church Office, High St. 01483 273227

#### Baptist

Rev. David Burt

Church Office, High St. 01483 275371

#### Free Church

Mr Cyril Wearn

Alfold Chapel, Alfold Road, Alfold 01403 752167

### CITIZENS ADVICE

#### WAVERLEY CRANLEIGH BUREAU

Village Way - Cranleigh 0344 848 7969

Monday, Tuesday & Thursday  
10.00 a.m. - 4.00 p.m.

**The Nail & Beauty Studio**  
**01483 275300**  
2 Collins Court, High St, Cranleigh GU6 8RL



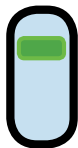
**WILL POWER**  
Electrical Installations

**YOUR LOCAL ELECTRICIAN**

Daytime - 07740 42 73 42 Cranleigh - 01483 26 86 46  
[willpowerelectrical.co.uk](http://willpowerelectrical.co.uk) ESTABLISHED 1994



# Helpful Telephone Numbers



## PHYSIOTHERAPISTS & OSTEOPATHS

Cranfold Physical Therapy Centre  
**01483 267747**  
Cranleigh Osteopathic Practice  
**01483 268628**  
Cranleigh Chiropractic Clinic **01483 200358**

## PODIATRISTS / CHIROPODISTS

Cranfold Physical Therapy Centre  
**01483 267747**  
Cranleigh Foot Clinic **01483 276178**  
Mrs R.A. Wimbledon SRCh **01483 277505**

## DOCTORS AND SURGERIES

Cranleigh Medical Practice **01483 273951**  
Loxwood Surgery **01403 752246**  
Rudgwick Surgery **01403 822103**  
Wonersh Surgery **01483 898123**  
Shere Surgery & Dispensary **01483 202066**  
Cranleigh Village Hospital **01483 782400**  
Royal Surrey County Hospital **01483 571122**

## CHEMISTS / PHARMACY

Cranleigh Pharmacy **01483 274323**  
Rudgwick Pharmacy **01403 823791**  
Boots/Boots High Street **01483 276799/01483 274323**

## DENTAL SURGERY

Warren House Dental Practice **01483 274664**  
Cranleigh Dental Centre **01483 268999**  
Kelsham Dental Practice **01483 274552**

## VETERINARY

Brookmead Veterinary Surgery **01483 274242**  
Alfold Veterinary Surgery **01403 753500**  
Yew Tree Veterinary Centre **01483 361926**  
Hunters Lodge Veterinary Practice  
**01483 276464**

## ADVICE

Citizens Advice Bureau **0844 8487969**

## COUNSELLING

New Directions Counselling **01483 268008**  
Horizon Counselling & Consultancy Services  
**01483 275999**

## RESTAURANTS IN CRANLEIGH

Meghalaya Restaurant **01483 277145**  
Ask Cranleigh **01483 271555**  
Take It To The Table **01483 274036**  
The Curry Inn **01483 273992**  
Rania Restaurant **01483 267800**  
The Richard Onslow **01483 274922**

## EMERGENCY

Police (Emergency) **999**  
Police (Non-Emergency) **101**  
NSPCC **0800 800500**  
National Missing Persons **0500 700700**  
Rape & Sexual Abuse Support Centre (RASASC) **0808 8029999**  
Crimestoppers **0800 555111**  
Childline **0800 1111**  
RSPCA **0300 1234999**  
Samaritans **0845 7909090**  
NCT Helpline **0300 3300770**

## TRAVEL

AA Emergency Breakdown **0800 887766**  
Flight Enquiries for **Gatwick 0844 8920322**  
Flight Enquiries for **Heathrow 0844 3351801**  
National Rail Enquiries **0845 7484950**  
RAC Emergency Breakdown **0333 2000 999**

## LEISURE

Cranleigh Leisure Centre **01483 274400**

## LOCKSMITHS

Locksmith Godalming-24/7 **01483 320143**  
Be Safe Security Ltd **01483 860708**

## HELPLINES

Surrey Drug Care **01483 300112**  
Age Concern Waverley **01483 548812**  
Alcoholics Anonymous **0845 7697555**  
Citizens Advice Bureau **0344 848 7969**  
Cranleigh Community Line **01483 267999**  
Cruse Bereavement Care **01483 565660**  
Legal Line **0906 5534545**  
Victim Support (Surrey) **0845 3899528**

## CHARITIES

Cranleigh & District Lions Club **0845 8332711**  
Cranfold Job Seekers Club **01483 272252**  
Ewcare **01483 277606**

## COUNCILS

Cranleigh Parish Council **01483 272311**  
Surrey County Council **0845 6009009**  
Waverley Borough Council **01483 523333**







**M.E.S** 01483 351 964

[www.mescranleigh.co.uk](http://www.mescranleigh.co.uk)

Servicing  
Repairs  
Diagnostics  
MOT Testing  
Recovery



**Full Valeting Centre**



**Full MOT Bay**



**New Customers  
10% Labour  
Discount**

**COURTESY  
WASH & VAC  
WITH EVERY  
VEHICLE SEEN**



**11 Courtesy Cars Available**

**MOT's**

**Free Collection & Delivery**

**Bodywork & Paintwork Repair**

**Full Diagnostics**

**10 Bay / 8 Ramp Facility**

**Vehicle Recovery**

**Full Valeting Centre**

Mechanical Engineering Services, Vastbridge Cottage, Alfold Road, Cranleigh, Surrey, GU6 8JS



# BROOKMEAD VETERINARY SURGERY



## “Giving new life to your pets”

Numerous studies show that K-Laser Therapy can help relieve pain, reduce swelling, and increase range of movement. We also offer K-Laser therapy after operations to encourage wound repair.



After their pets had a course of K-laser therapy, clients said,

“He no longer needs anti-inflammatory drugs and now wants to play again”

Head Nurse Kerry-Anne  
demonstrating K-Laser Therapy

## 01483 274242

[www.brookmead-vets.co.uk](http://www.brookmead-vets.co.uk) email: [info@brookmeadvets.com](mailto:info@brookmeadvets.com)



Brookmead Veterinary Surgery-follow us on Facebook

ref=ts

**Brookmead Veterinary Surgery, Horsham Road, Cranleigh, Surrey, GU6 8DL**

Established over 50 years